

04643

Model 820-226

Complete sprayer with 50 ft hose, 3 ft whip hose, Flex gun, RAC® IV DripLess™ Tip Guard, and SwitchTip™

Technical Data

Maximum Working Pressure	2750 psi (195 bar)
Electric Motor	1/2 HP, DC
Power Requirements	120 VAC, 60 Hz, 1 phase, 15 amp minimum or 3000 watt generator
Delivery	0.33 gpm (1.25 lpm)
Cycles Per Gallon (liter)	620 (164)
Tip Size	one gun with 0.019 new tip with latex at 2000 psi (138 bar)
Inlet Paint Strainer	12 mesh (1525 micron) reusable stainless steel screen
Fluid Inlet	1/2 npt (f)
Fluid Outlet Size	1/4 npsm (m)
Spray Hose Requirements	grounded, 50 ft (15 m) minimum, non-wire braid, spring guards on both ends
Pump Material	carbon steel, stainless steel, aluminum, delrin®
Pump Packing Material	PTFE® UHMW polyethylene, leather

Application

Sprays stains, lacquers, oil base, or latex. **Do not** use with solvents such as methylene chloride or other HHCs.

Patent number 5,292,232.

Dimensions

Weight (dry, without packaging)	35 lb (16 kg)
Height	18 in. (457 mm)
Length	15 in. (381 mm)
Width	12.5 in. (318 mm)



SHERWIN-WILLIAMS COMPANY
CLEVELAND, OHIO 44115

©COPYRIGHT 1995, GRACO INC.
PRINTED IN U.S.A. 82Z-228 August 1995

TO PLACE AN ORDER, call
1-800-367-4023 Toll Free

FOR TECHNICAL ASSISTANCE, call
1-800-543-0339 Toll Free

Supplement to instruction manual 820-228

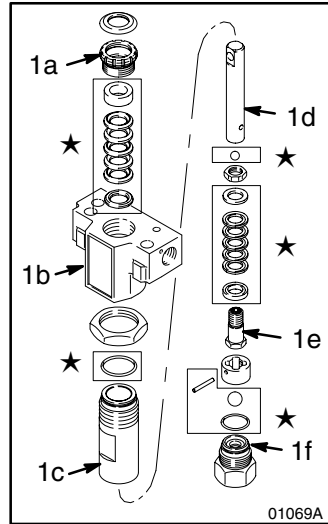
Nova[®] spx

⚠ WARNING



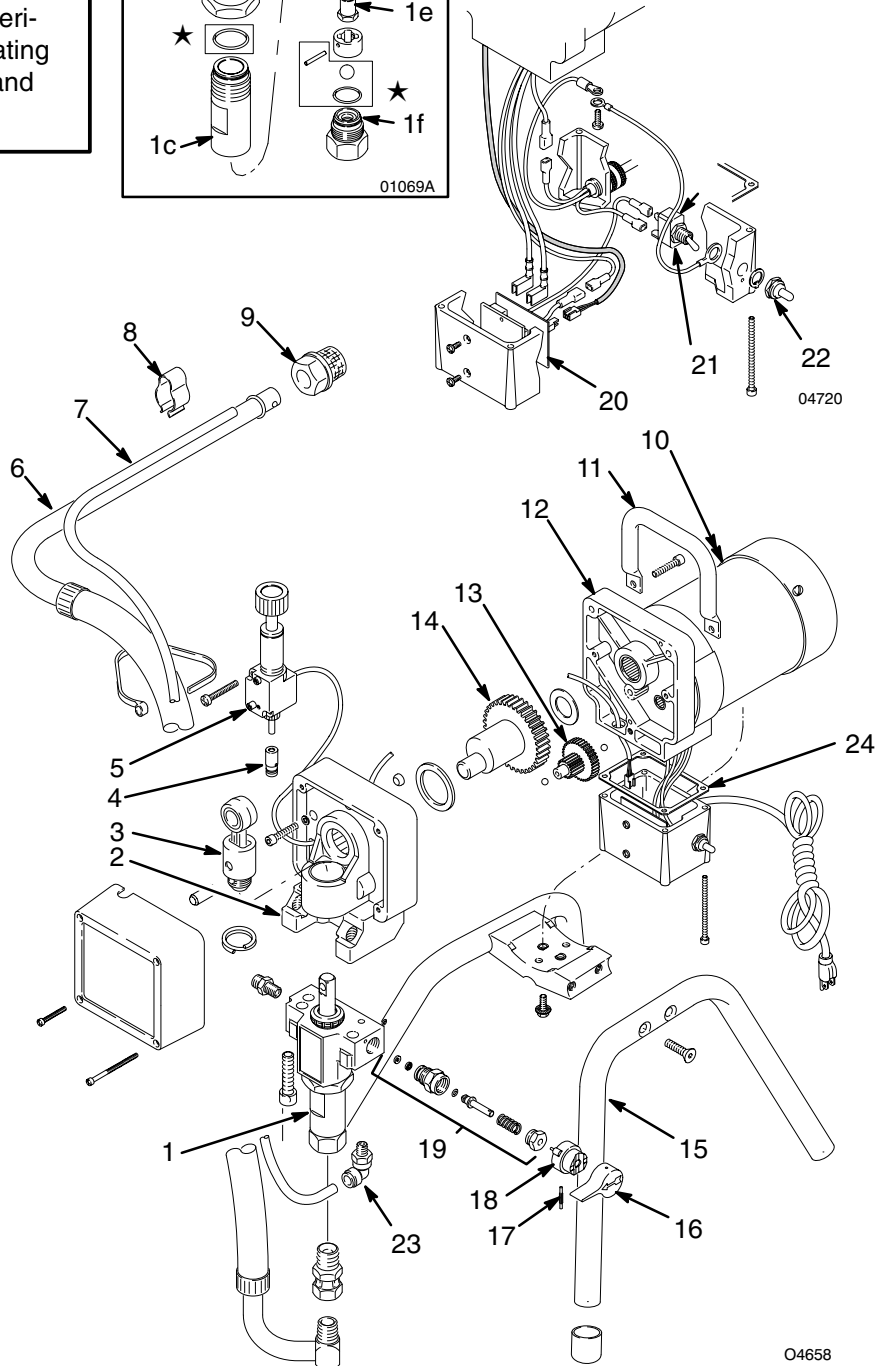
INJECTION HAZARD

This form is only a quick reference to the features and frequently ordered parts of this sprayer. To reduce the risk of serious injury, including fluid injection, while operating or repairing this sprayer, follow the warnings and instructions in manual 820-228.



Model 820-226, Series A

Ref No.	Part No.	Description
1	820-887	Displacement Pump
1a	820-287	. Packing Nut
1b	820-970	. Manifold
1c	820-973	. Cylinder
1d	820-971	. Displacement Rod
1e	820-974	. Piston Valve
1f	820-975	. Inlet Valve
2	820-882	Drive Housing Kit
3	820-604	Connecting Rod
4	820-894	Pressure Transducer
5	820-923	Pressure Control Kit
6	821-053	Suction Hose & Tube
7	821-054	Drain Tube
8	821-060	Clip
9	821-058	Strainer
10	187-791	Danger Label
11	821-051	Handle
12	820-880	Motor Kit
13	820-605	Gear Reducer
14	820-884	Crankshaft
15	821-056	Leg
16	820-912	Drain Valve Handle
17	820-911	Pin
18	820-910	Valve Base
19	820-904	Drain Valve Kit
20	820-914	Motor Start Board
21	820-342	ON/OFF Switch
22	820-341	Boot
23	821-005	Drain Elbow
24	820-924	Gasket



▲ Extra danger labels are available for free.

Packing Repair Kit 820-908
Includes all parts marked with a ★

Motor Brush and Spring Kit 821-022

Motor Brush Spring Clip 821-061