

215964 Repair Kit

For Repairing or Converting to Polyethylene 1:1 Metric Fast-Flo[®] Pumps with Polyethylene Cup Piston Packings.

405643D

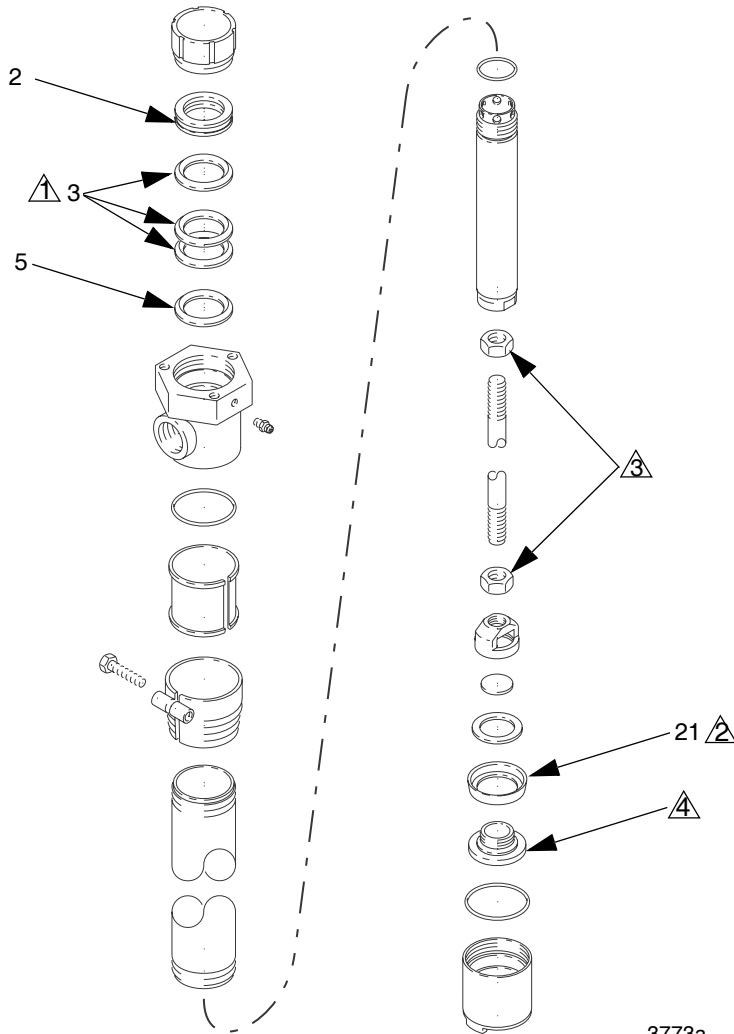
EN



Important Safety Instructions





Read all warnings and instructions in this manual and in pump manual 307427. Save all instructions.

NOTE: Reference numbers in this drawing correspond to reference numbers in manual 307427.



Parts

Ref.	Description	Qty.
2	GLAND, female, stainless steel	1
3	V-PACKING, polyethylene	3
5	GLAND, male, stainless steel	1
21	CUP, piston, polyethylene	1

-  Lips of v-packings must face down.
-  Lips of piston cup must face up.
-  Torque to 33 Nm (24 ft-lb).
-  Torque to 31 Nm (23 ft-lb).

Graco Information

For the latest information about Graco products, visit www.graco.com.

TO PLACE AN ORDER, contact your Graco distributor or call to identify the nearest distributor.

Phone: 612-623-6921 **or Toll Free:** 1-800-328-0211 **Fax:** 612-378-3505

*All written and visual data contained in this document reflects the latest product information available at the time of publication.
Graco reserves the right to make changes at any time without notice.*

Original instructions. This manual contains English. MM 405643

Graco Headquarters: Minneapolis

International Offices: Belgium, China, Japan, Korea

GRACO INC. AND SUBSIDIARIES • P.O. BOX 1441 • MINNEAPOLIS MN 55440-1441 • USA

Copyright 1999, Graco Inc. All Graco manufacturing locations are registered to ISO 9001.

www.graco.com
Revised July 2012