



QuickShot™

QUICK GUIDE



WARNING



Read Owner's Manual (3A9301) for complete instructions and warnings. This quick guide is not a substitute for reading and understanding all instruction manuals and warning labels supplied with the equipment. Manuals are available at graco.com



Follow pressure relief procedure and wear protective equipment including but not limited to protective eye wear.



SKIN INJECTION HAZARD: Keep clear of spray tip and leaks. Engage trigger lock when not spraying.



FIRE AND EXPLOSION HAZARD: Use only non-flammable or water-based materials. Follow fire and explosion warnings as listed in your manual.

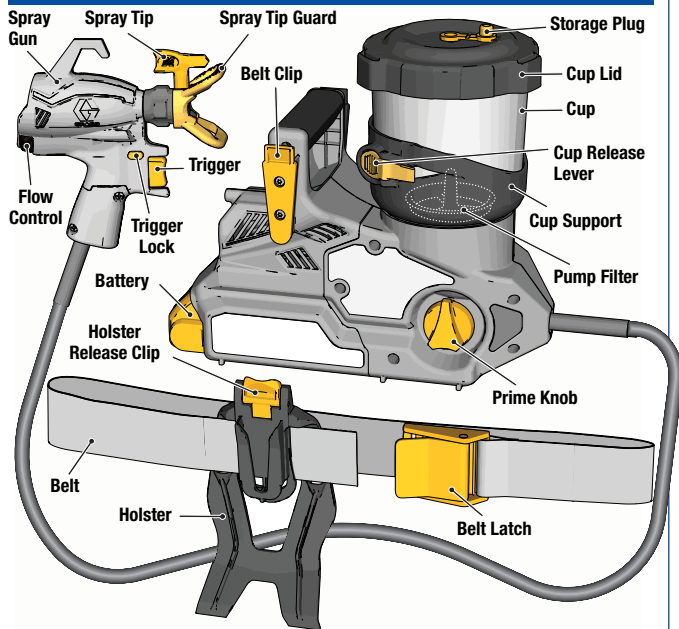


FAILURE TO FOLLOW ALL WARNINGS CAN RESULT IN SERIOUS INJURY, AMPUTATION, OR DEATH.



Instructions in Quick Guide are for water-based paints only. See Owner's Manual for instructions for use with Oil-Based or Flammable materials.

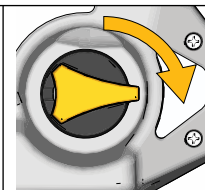
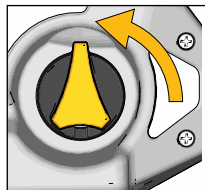
KNOW YOUR SPRAYER



Prime Knob

Turn Prime knob up to PRIME position to relieve system pressure.

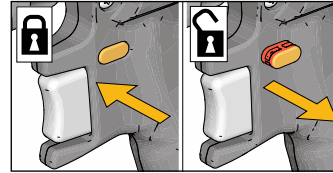
Turn Prime Knob forward to SPRAY position to spray fluid.



SPRAYER SETUP

1 Engage Trigger lock.

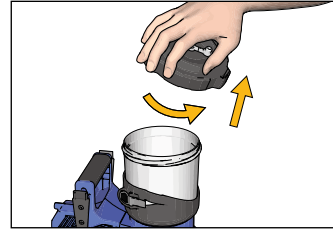
- No visible red showing on trigger lock is the locked position.
- Always engage trigger lock when not spraying.



2 Turn Prime Knob up to PRIME position.

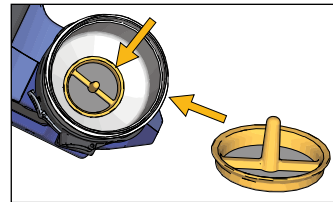


3 Remove the cup lid from the cup.



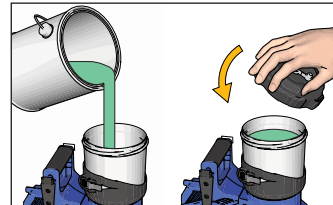
4 Verify a clean pump filter is installed in the bottom of the cup at the pump inlet.

- A dirty or plugged pump filter will result in poor sprayer operation or loss of prime.

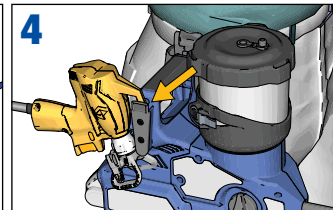
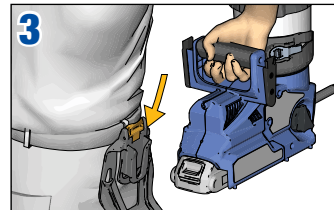
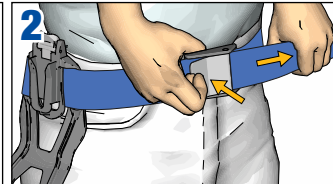
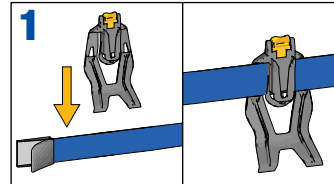


5 Fill cup with paint and reinstall Cup Lid.

- Instructions in Quick Guide are for water-based paints only.
- See owners manual for instructions for use of Oil-Based or Flammable materials.

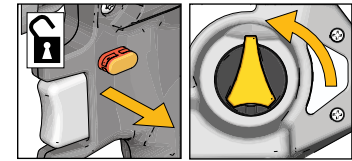


BELT SETUP

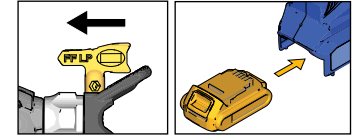


START UP

1 Disengage Trigger Lock and verify Prime Valve Knob is in the PRIME position.



2 Turn the Spray Tip to the UNCLOG position and Install a fully charged battery.



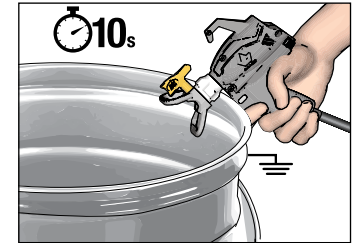
3 Verify Storage Plug is OPEN.

- Storage plug must be open during spraying to avoid an air lock in the cup and loss of prime.

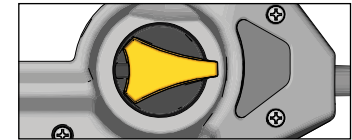


4 To prime the pump, point the gun into a waste pail and pull the trigger for 10 seconds.

- This will purge air from the pump.
- The electronic gun is always open when the trigger is pulled, so a small amount of fluid may spray out while priming.

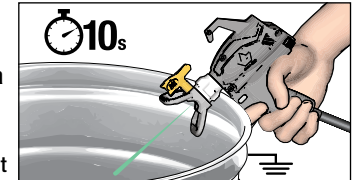


5 Turn the Prime Valve knob forward to the SPRAY position.

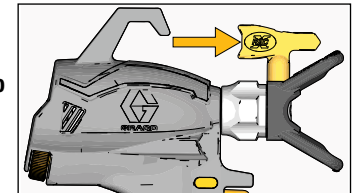


6 To prime the hose and gun, point the gun into a waste pail and pull the trigger for 10 seconds or until there is a steady stream of paint.

- This will purge all air (and storage fluid) from the hose and gun. Fluid may spray out while priming.



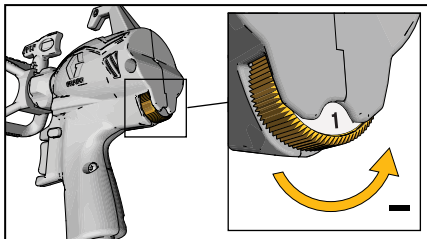
7 Turn the Spray Tip forward to the SPRAY position.



NOTE: To avoid pump damage, if gun does not spray after 10 seconds STOP and repeat STARTUP.

You are now ready to spray!

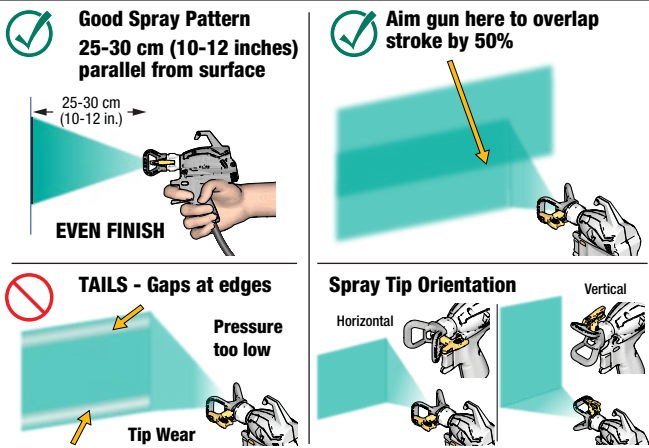
SPRAY



1 Set Flow Control to setting #1 (lowest setting).

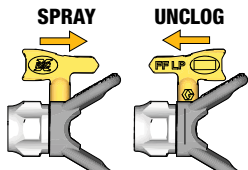
2 Pointing at a piece of scrap cardboard, pull the Trigger to test the spray pattern. Adjust the following to achieve desired spray pattern:

- Speed Control
- Hand Speed
- Distance from surface
- Spray Tip Orientation



CLEAR TIP CLOGS

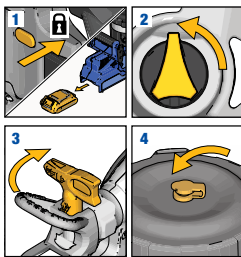
If you encounter a Spray Tip clog, Reverse the Spray Tip and spray into a waste area to remove the clog. Return the Spray Tip to spray position to spray. See Owners Manual.



PAUSE IN SPRAYING

Paint will dry quickly and cause clogs in the sprayer. Follow these steps whenever you pause spraying for 5 minutes to 2 hours.

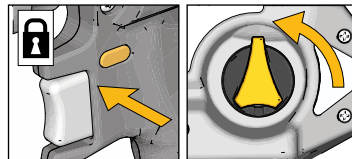
- 1** Engage Trigger Lock and remove Battery from sprayer.
- 2** Turn Prime Knob up to PRIME position to relieve system pressure.
- 3** Turn Spray Tip 90 degrees to seal orifice from drying out.
- 4** Close Storage Plug in Cup Lid to seal material in Cup.



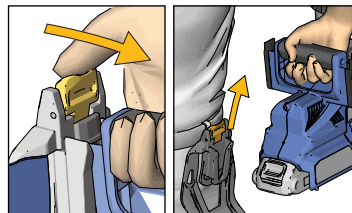
CUP REFILLS

Cup refills can be performed while wearing the sprayer on the Belt or after removing the sprayer from the Belt and setting it on a flat surface.

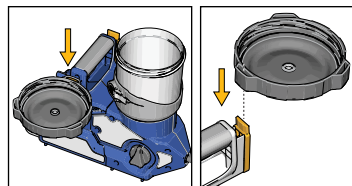
1 Engage Trigger Lock and Turn the Prime Valve Knob up to PRIME position to relieve system pressure.



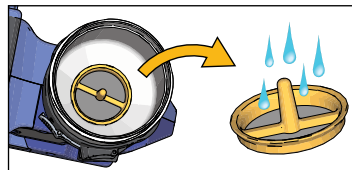
2 If desired, remove Sprayer from the Tool Belt by pressing the Holster Release Clip and pulling up on the Sprayer.



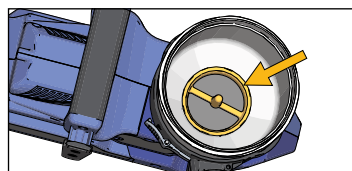
3 Remove the cup lid from the cup.
• The cup lid can hook onto sprayer while refilling cup.



4 Remove the Pump Filter and clean debris from the filter screen.



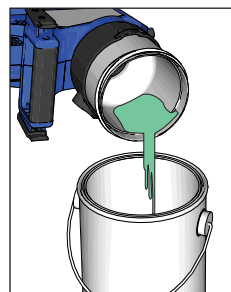
5 Reinstall the Pump Filter in the bottom of the cup.



6 Refill the cup with paint and reinstall Cup Lid. Follow STARTUP instructions to proceed.

CLEANUP AND STORAGE

1 Engage Trigger Lock and turn Prime Knob up to PRIME position to relieve system pressure.



2 Remove sprayer from Tool Belt. Remove Cup Lid from Cup and pour extra paint back into paint can.

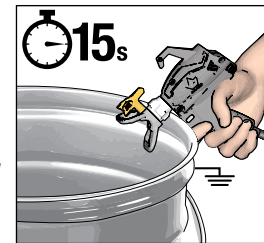
3 Remove Pump Filter from cup and set aside for cleaning.

CLEANUP AND STORAGE

continued

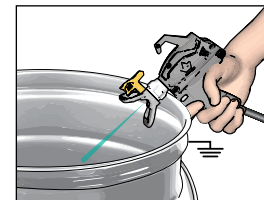
4 Circulate Cleaning Fluid:

- Fill cup half-full of water
- Reinstall Cup Lid
- Verify Storage Plug is open
- Verify Prime Knob is pointed up to PRIME position and turn Spray Tip to UNCLOG position.
- Disengage Trigger Lock and turn Flow Control to 10. Point Spray Gun into a waste pail and trigger for 15 sec.



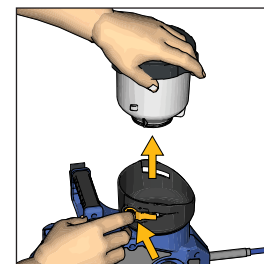
5 Spray Cleaning Fluid:

- Turn Prime Knob forward to SPRAY position and verify Spray Tip is in the UNCLOG position.
- Point Spray Gun into a waste pail and trigger until cleaning fluid is emptied from the Cup.



6 Clean Cup:

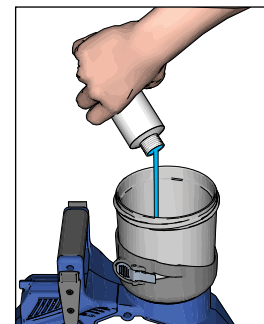
- Verify cup is empty and remove cup from sprayer by depressing the Cup Release Lever and rotating Cup out of Cup Support.
- Clean Cup, Cup Lid, and Pump Filter in warm water.
- Wipe out Cup Support with wet rag and reinstall Cup, Pump Filter and Cup Support.



7 Repeat steps 4 and 5 as needed until clean.

8 Storage:

- Circulate and spray a small amount of Pump Armor Storage Fluid.
- Engage Trigger Lock
- Turn Prime Knob to PRIME position.
- Remove Battery, Spray Tip and Spray Tip Guard.
- Clean Spray Tip and Spray Tip Guard with warm water and a old tooth brush and reinstall onto gun.
- Turn Spray Tip 90 degrees for storage and CLOSE Storage Plug on Cup Lid.



GRACO

©2022 Graco Distribution BV 3A9323ENEU-A 06/23. Printed in Europe.
Source Manual: 3A9301, MM 3A9323.