

Pressure Control Replacement Kit

334791B

EN



IMPORTANT SAFETY INSTRUCTIONS

For detailed sprayer information and warnings, see the Owners manual included with your sprayer.

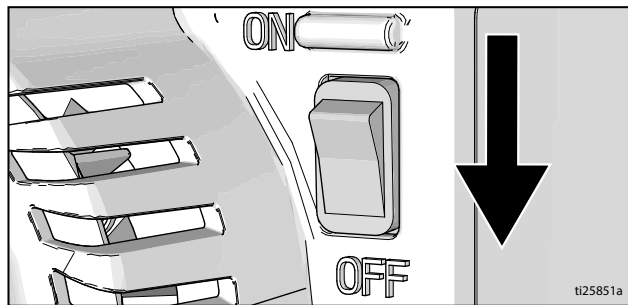
Pressure	Kit Number
3000 psi	24X312
3300 psi	24X289

Pressure Relief Procedure

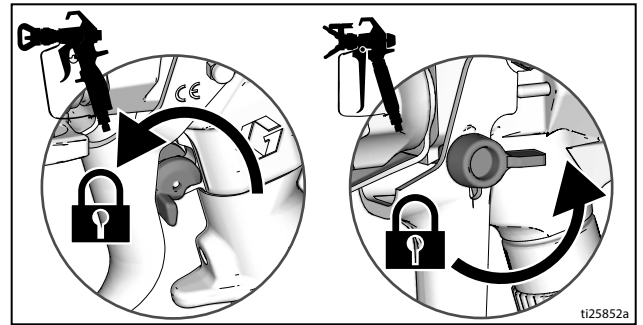
⚠ WARNING

SKIN INJECTION HAZARD: This sprayer is capable of producing 3300 psi (22.8 MPa, 228 bar) during use. Follow this **Pressure Relief Procedure** whenever you stop spraying and before cleaning, checking, servicing, or transporting equipment to prevent serious injury.

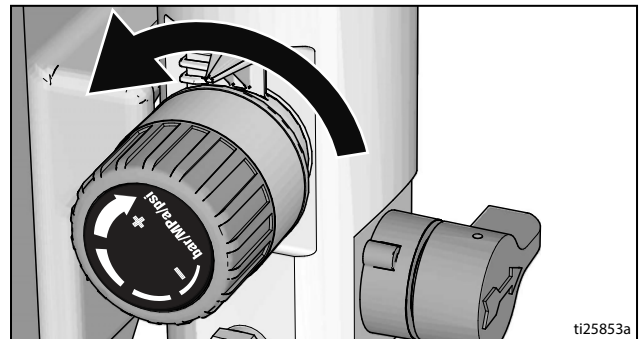
1. Turn ON/OFF switch to **OFF** position. Wait 7 seconds for power to dissipate.



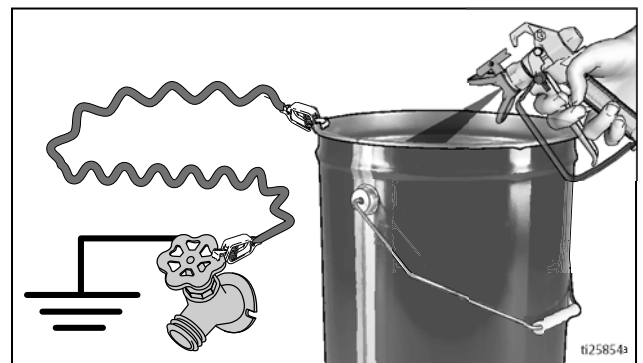
2. Engage trigger lock.



3. Turn pressure control to lowest setting. Disengage trigger lock.



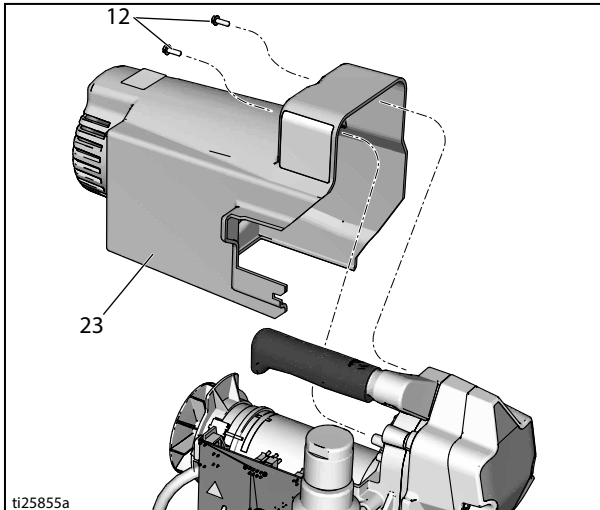
4. Hold a metal part of the gun firmly to a grounded metal pail. Trigger the gun to relieve pressure.



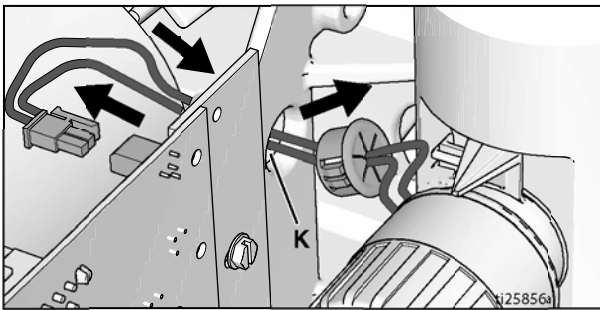
5. Engage trigger lock.

Removal

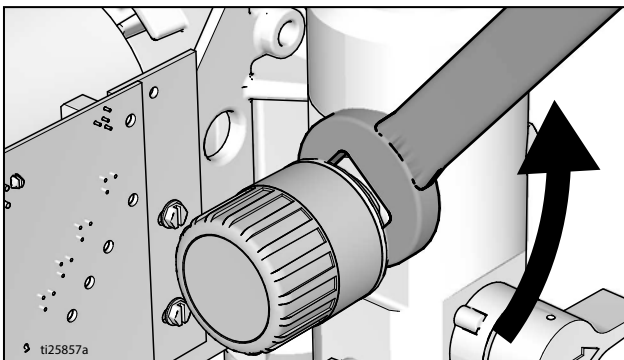
1. Perform **Pressure Relief Procedure**.
2. Turn ON/OFF switch to **OFF** position and disconnect power cord from outlet.
3. Remove motor shield (23).



4. Disconnect pressure control assembly connector from control board. See **Wiring Diagrams**, on page 4.
5. Pull bushing (19) out of the hole (K) with pressure control wires.



6. Loosen and remove pressure control (38).

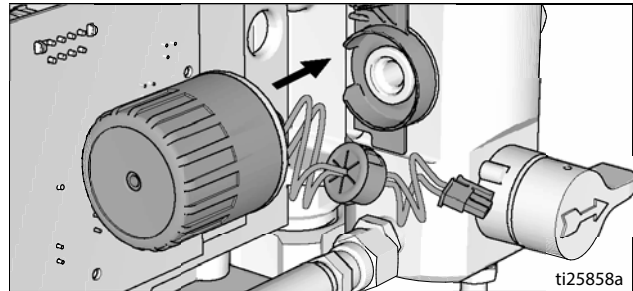


NOTICE

If you intend to reuse the pressure control, be careful not to damage or tangle the wires when unscrewing the pressure control.

Installation

1. Verify that the o-ring is installed on the pressure control (38) before installing it.
2. Align pressure control indicator (21) on the manifold (15) so the opening for the wires faces the motor and the indicator faces up.

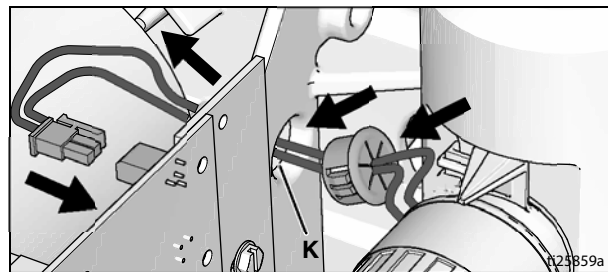


3. Apply thread sealant to pressure control (38) threads.
4. Install pressure control (38). Torque to 140-160 in-lb (15.8 - 18.1 N•m).

NOTICE

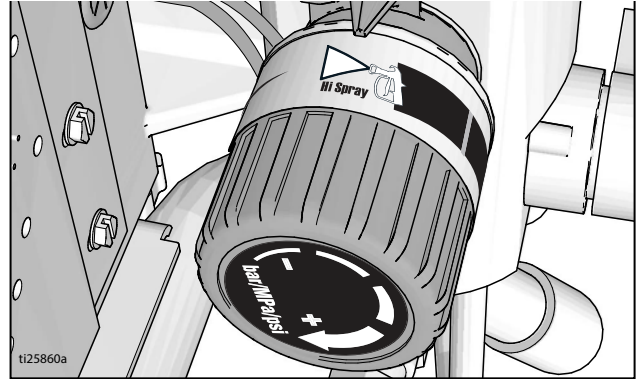
Be careful when tightening pressure control (38), make certain wires are not pinched between pressure control (38) and manifold (15).

5. Tuck wires into pressure control indicator (21) and out the opening. Feed wires through housing hole (K).
6. Insert bushing (19) in hole (K).



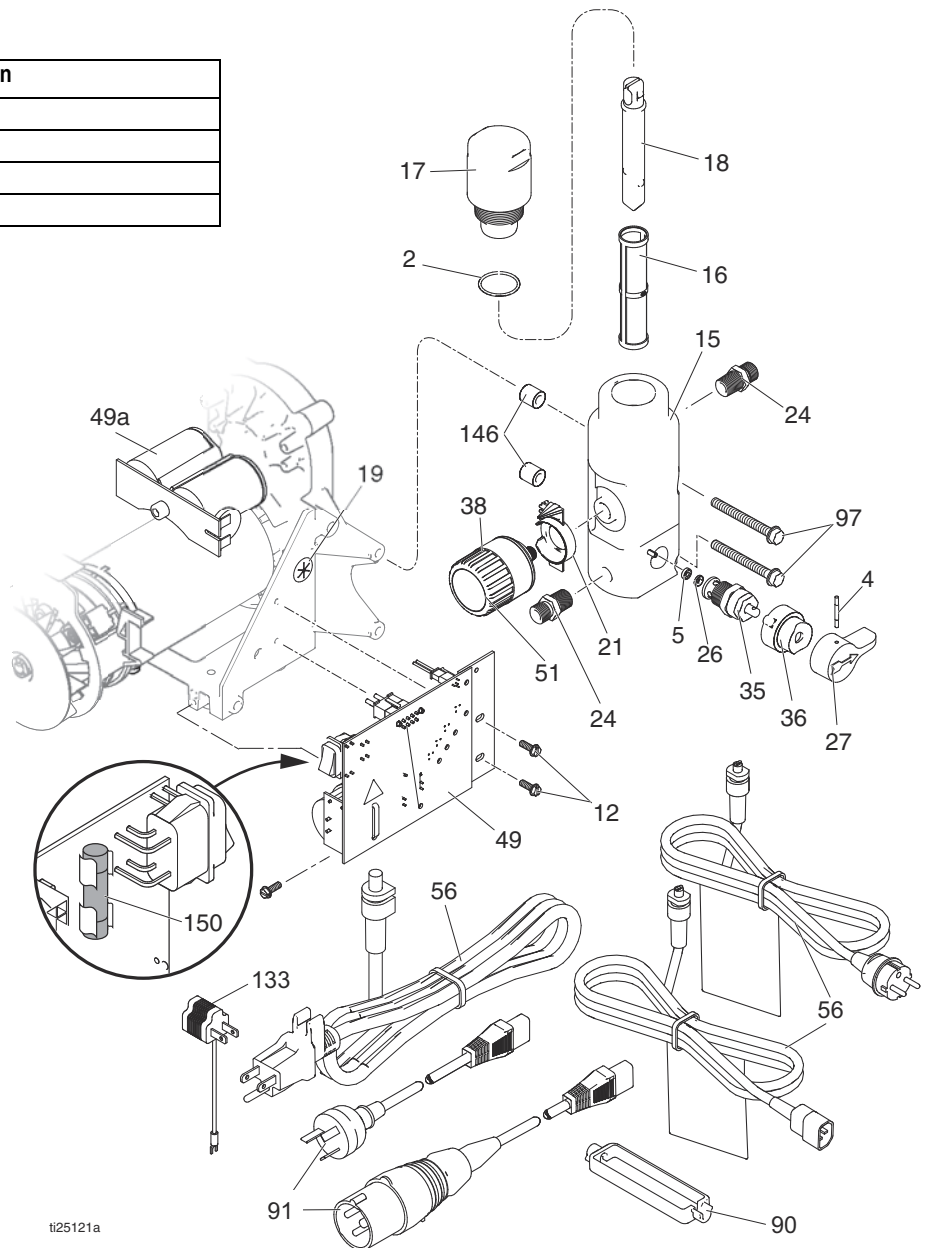
7. Connect pressure control assembly connector to control board. See **Wiring Diagrams**, on page 4.
8. Install motor shield (23).
9. Turn pressure control knob (38) clockwise as far as it will go. Apply new pressure control label to knob.

When label is positioned properly, the indicator and hi-spray position symbol on the pressure control label are aligned.

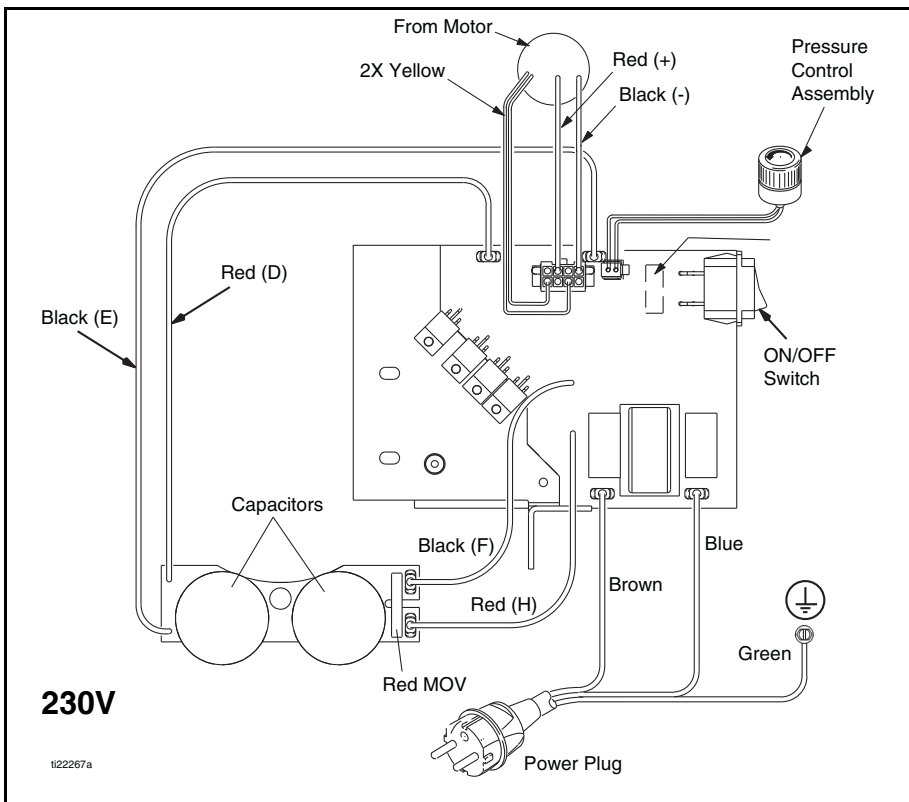
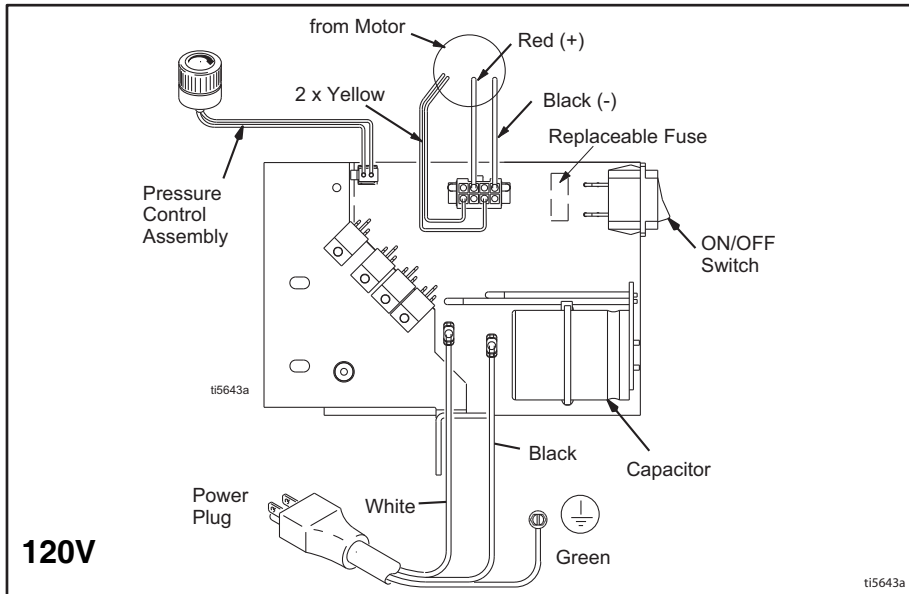


Assembly Drawing

Ref.	Description
15	Manifold
19	Bushing
21	Pressure control indicator
38	Pressure control



Wiring Diagrams



All written and visual data contained in this document reflects the latest product information available at the time of publication. Graco reserves the right to make changes at any time without notice.

For patent information, see www.graco.com/patents.

Original instructions. This manual contains English. MM 334791

Graco Headquarters: Minneapolis
International Offices: Belgium, China, Japan, Korea

GRACO INC. AND SUBSIDIARIES • P.O. BOX 1441 • MINNEAPOLIS MN 55440-1441 • USA

Copyright 2014, Graco Inc. All Graco manufacturing locations are registered to ISO 9001.

www.graco.com

Revision B - June 2019