

Potentiometer Kit 17D888

334785B

EN

Follow these instructions when replacing the potentiometer that is located in the control box.



IMPORTANT SAFETY INSTRUCTIONS

For detailed sprayer information and warnings, see the Owners manual included with your sprayer.

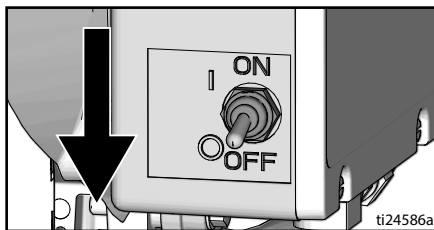
The 17D888 potentiometer is used on the 395, 490, 495, and 595 PC sprayers. Potentiometer knob calibration is only required on units with FastFlush.

Pressure Relief Procedure

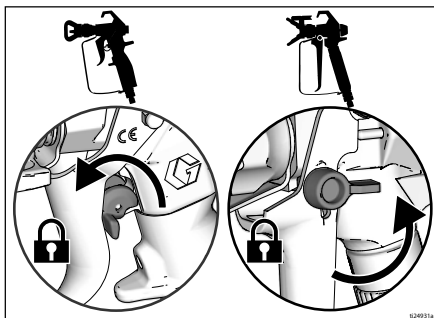
⚠ WARNING

SKIN INJECTION HAZARD: This sprayer is capable of producing 3300 psi (22.8 MPa, 228 bar) during use. Follow this **Pressure Relief Procedure** whenever you stop spraying and before cleaning, checking, servicing, or transporting equipment to prevent serious injury.

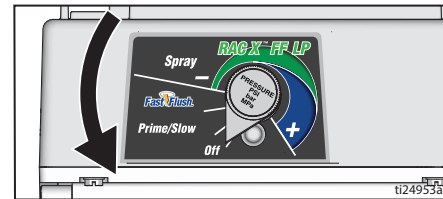
1. Turn ON/OFF switch to **OFF** position. Wait 7 seconds for power to dissipate.



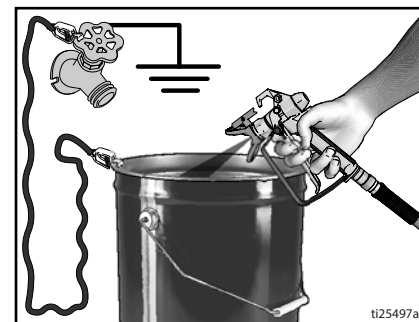
2. Engage trigger lock.



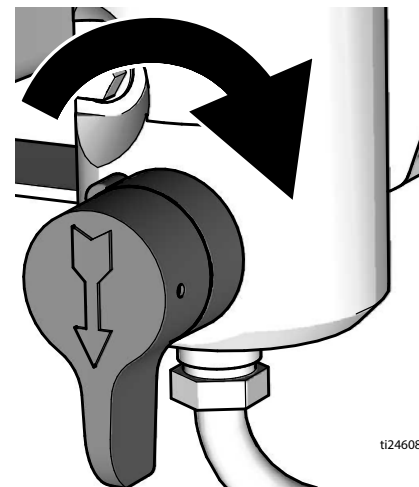
3. Turn pressure control to lowest setting. Disengage trigger lock.



4. Hold a metal part of the gun firmly to a grounded metal pail. Trigger the gun to relieve pressure.



5. Engage trigger lock.
6. Put drain tube in pail. Turn prime valve down. Leave prime valve in down (drain) position until you are ready to spray again.



7. If you suspect the spray tip or hose is clogged or that pressure has not been fully relieved:
 - a. VERY SLOWLY loosen tip guard retaining nut or hose end coupling to relieve pressure gradually.
 - b. Loosen nut or coupling completely.
 - c. Clear hose or tip obstruction.

⚠ WARNING

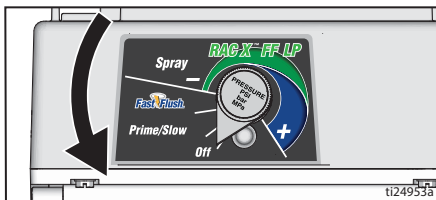
ELECTRIC SHOCK HAZARD: Turn off and disconnect power before servicing equipment

Removal

1. Perform **Pressure Relief Procedure**.
2. Disconnect power to the sprayer.
3. Remove screws (12) from digital display assembly or control cover (50).
4. Move display assembly/cover aside to allow access to the potentiometer.
5. Disconnect potentiometer lead from motor control board.
6. Remove potentiometer knob (11) by loosening the two set screws.
7. Remove O-ring (129) when used, nut (37), and pressure adjust potentiometer (37).

Installation

1. Install pressure adjust potentiometer (37) and nut (37).
2. Assemble with wires of potentiometer (37) facing the back of the control box (48).
3. When used place the O-ring (129) over the potentiometer stem.
 - a. Turn potentiometer fully counter-clockwise.

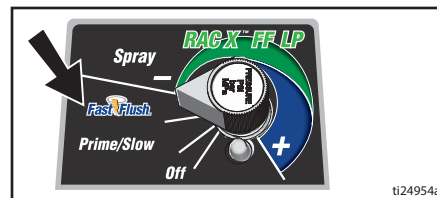


- b. Install knob (11) at full counter-clockwise position.
- c. Tighten the two set screws on knob (11).
- d. If O-ring (129) is used there should be a slight drag when knob (11) is rotated.

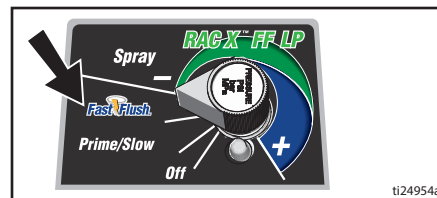
4. Connect potentiometer lead (J8 or J12) to motor control board (49). Refer to the wiring diagram found in your sprayer Operation manual.
5. Install digital display assembly or control cover (50) with screws (12) removed earlier.
6. On models with FastFlush perform potentiometer knob calibration.

Potentiometer Knob Calibration

1. Plug sprayer into grounded outlet. Turn ON/OFF switch to **ON** position.
 - a. Turn potentiometer knob indicator to line between FastFlush and Spray position.

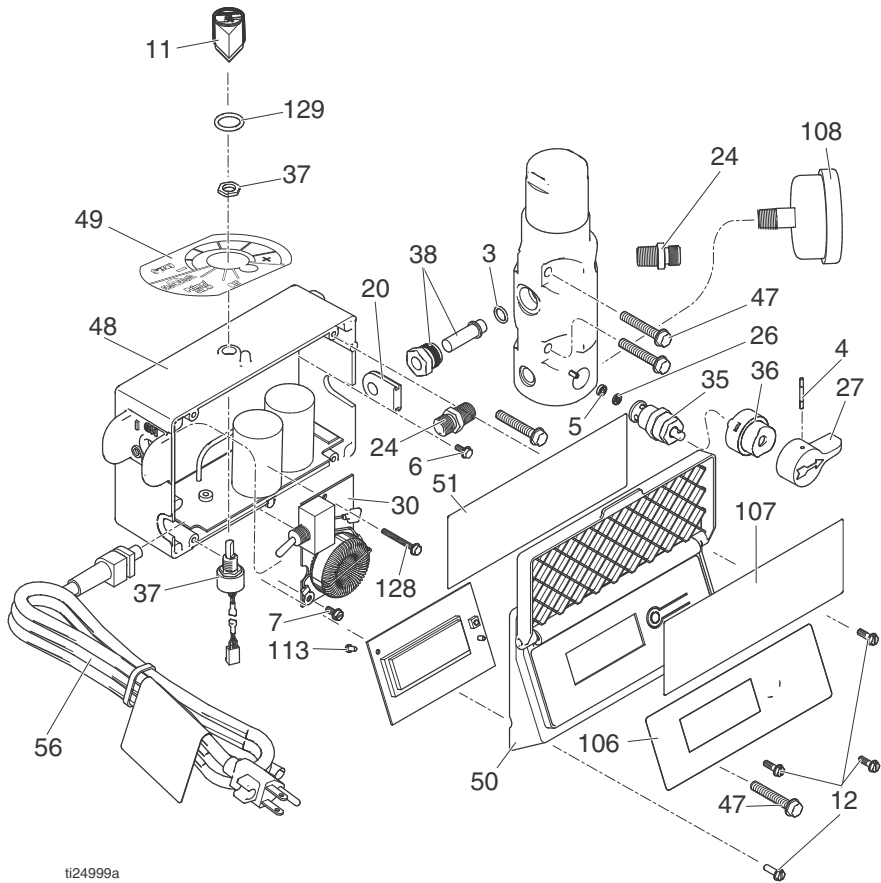


- b. Press and hold display button and turn ON/OFF switch to **ON** position. Sprayer serial number (S/N) is displayed.
- c. Press and hold display button for five seconds until **KNOB3** appears.
- d. Up to three calibration attempts are allowed before you must start the installation process over.
- e. Press display button. Knob is calibrated if display shows **OK ##**. If display shows **BAD** potentiometer knob calibration must be repeated.
2. Align potentiometer knob indicator to the line between FastFlush and Spray position.



3. With **KNOB2** displayed, press the display button.
 - a. **OK ##** is displayed if calibration is successful.
 - b. If **BAD** is displayed, one more calibration attempt is allowed. This is indicated by **KNOB1** on the display.
4. If a third calibration attempt results in the display showing **CE=07** turn off the sprayer. Remove the potentiometer and knob. Re-install the potentiometer and knob following these instructions starting at the beginning.

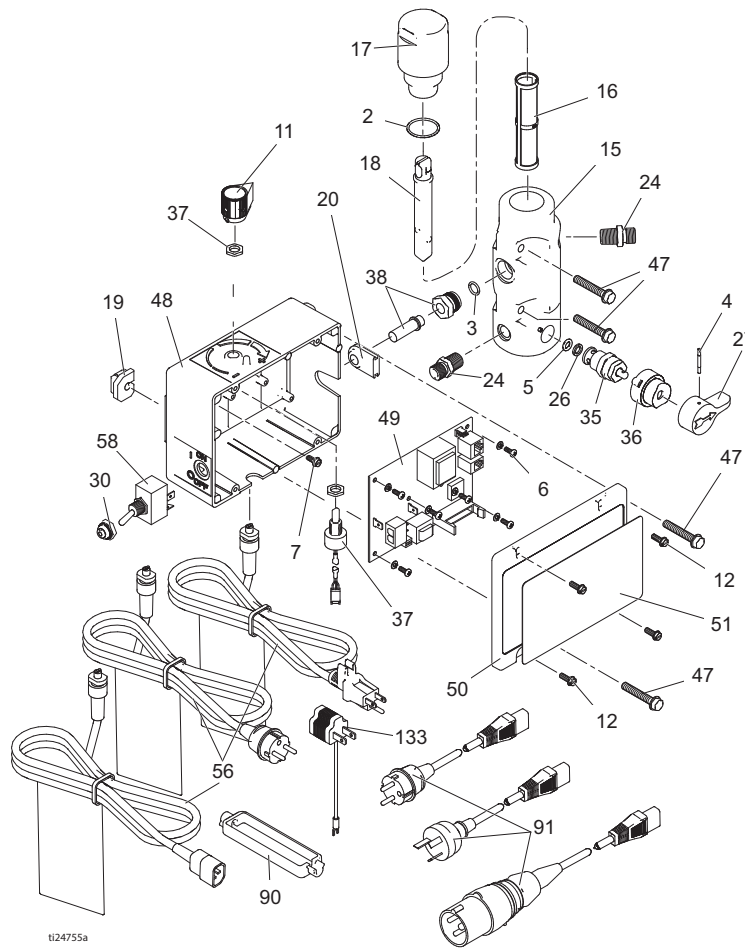
Models with FastFlush



ti24999a

Ref.	Description
11	Knob
12	Machine screw
37	Potentiometer
37	Potentiometer nut
48	Control box
50	Digital display assembly
129	O-ring

395 Models



ti24755a

Ref.	Description
11	Knob
12	Machine screw
37	Potentiometer
37	Potentiometer nut
48	Control box
50	Control cover

All written and visual data contained in this document reflects the latest product information available at the time of publication. Graco reserves the right to make changes at any time without notice.

For patent information, see www.graco.com/patents.

Original instructions. This manual contains English. MM 334785

Graco Headquarters: Minneapolis
International Offices: Belgium, China, Japan, Korea

GRACO INC. AND SUBSIDIARIES • P.O. BOX 1441 • MINNEAPOLIS MN 55440-1441 • USA

Copyright 2015, Graco Inc. All Graco manufacturing locations are registered to ISO 9001.

www.graco.com

Revision B - May 2017