

Check-Mate[®] 800 Throat Seal Kits

334128C

EN

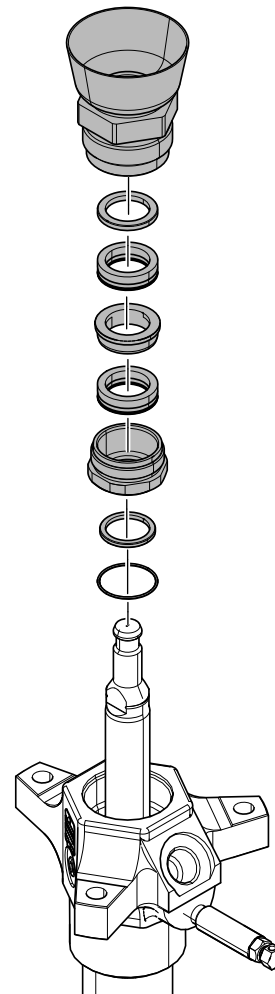
*For replacing seals, packings, and packing nut for Check-Mater 800 displacement pumps.
For professional use only.*

Kits 24V752, Series B
Kits 24V753, Series B



Important Safety Instructions

Read all warnings and instructions in this manual and your pump manual before using the equipment. Save these instructions.









Related Manuals

The following manuals are available at www.graco.com.

Manual in English	Description
334127	Check-Mate [®] 800 Displacement Pump (long shaft), Operation
334128	Check-Mate [®] 800 Displacement Pump (long shaft), Repair-Parts

Replace Throat Packings


WARNING

PRESSURIZED FLUID HAZARD
 This equipment stays pressurized until pressure is manually relieved. To help prevent serious injury from pressurized fluid, such as skin injection, splashing fluid and moving parts, follow the Pressure Relief Procedure in your pump operation manual when you stop pumping and before cleaning, checking or servicing the equipment.

PERSONAL PROTECTIVE EQUIPMENT
 Wear appropriate protective equipment when in the work area to help prevent serious injury, including eye injury, hearing loss, inhalation of toxic fumes, and burns.

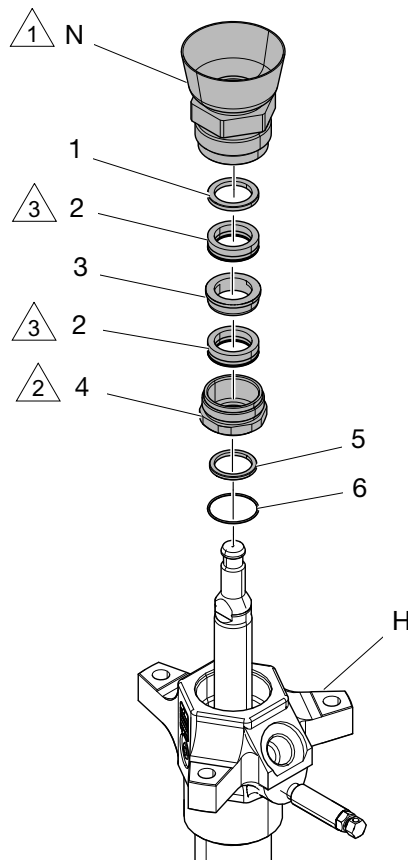
NOTE: The throat packings are available as a pre-assembled kit.

Pump	Throat Seal Repair Kit
24W152	24V752
24W153	24V753
24W150	24V752
24W151	24V753



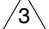
1. Follow the Pressure Relief Procedure in your pump operation manual.
2. Unscrew the packing nut (N) using a pipe wrench. Remove the o-ring (6) and washer (5) from the bottom of the packing housing (4) or from the outlet housing (H).
3. Place the flats of the packing nut (N) in a vise. Unscrew the packing housing (4) and discard it and the packings. Remove the washer (3), seal (2), and backup washer (1) from the packing nut.
4. The throat repair kit is pre-assembled. Screw the kit into the packing nut (N), making sure that the backup washer (1), seal (2), and washer (3) are properly positioned on top of the packing housing (4), with the lips of the seal facing down. Torque the

packing housing (4) to 225 ±10 ft-lb (305 ± 14 N•m).

5. Before installing packing housing into pump, generously lubricate seals with high temperature grease supplied with repair kit.
6. Before installing packing housing into pump, generously lubricate seals with high temperature grease supplied with repair kit.
7. Screw the packing nut (N) and packing housing (4) into the outlet housing (H). Torque to 150 ± 30 ft-lb (203 ± 41 N•m).

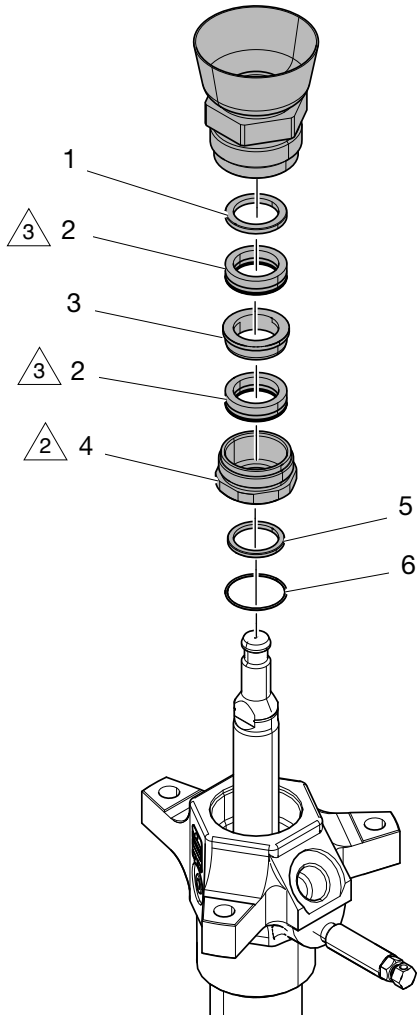


ti25426a

-  Torque to 225 ± 10 ft-lb (305 ± 14 N•m).
-  Torque to 150 ± 30 ft-lb (203 ± 41 N•m).
-  Lips of u-cup must face down.

Parts

Carbon-Filled Pump Seal Kit, 24V752 Glass-Filled Pump Seal Kit, 24V753



Ref.	Part	Description	Qty
1	19Y496	WASHER, seal, back-up	1
2	120286	PACKING, u-cup (assembly 24W152 only)	2
	113021	PACKING, u-cup (assembly 24W153 only)	2
3	19Y497	WASHER, scraper, 1.476 x 2.157	1
4	190585	NUT, packing	1
5	19Y495	WASHER, rod scraper	1
6	104537	PACKING, o-ring, PTFE	1
7	16M106	LUBRICANT, tube, 1 oz (not shown)	1

△ 2 Torque to 150 ± 30 ft-lb (203 ± 41 N•m).

△ 3 Lips of u-cup must face down.

Graco Information

For the latest information about Graco products, visit www.graco.com.

For patent information, see www.graco.com/patents.

TO PLACE AN ORDER, contact your Graco distributor or call to identify the nearest distributor.

Toll Free Phone Number: 1-800-328-0211

*All written and visual data contained in this document reflects the latest product information available at the time of publication.
Graco reserves the right to make changes at any time without notice.*

Original instructions. This manual contains English. MM 334128

Graco Headquarters: Minneapolis

International Offices: Belgium, China, Japan, Korea

GRACO INC. AND SUBSIDIARIES • P.O. BOX 1441 • MINNEAPOLIS MN 55440-1441 • USA
Copyright 2020, Graco Inc. All Graco manufacturing locations are registered to ISO 9001.

www.graco.com
Revision C, March 2025