

Instructions



Swivel Repair Kit

309517C

Part No. 244363, Series A and B

3600 psi (248 bar) Maximum Working Pressure



Important Safety Instructions

Read all warnings and instructions in this manual and manual 309314. Save these instructions.

PROVEN QUALITY. LEADING TECHNOLOGY.

GRACO INC. P.O. BOX 1441 MINNEAPOLIS, MN 55440-1441
Copyright 2002, Graco Inc. is registered to I.S. EN ISO 9001

309064

1

Pressure Relief Procedure

WARNING



To reduce risk of serious injury, including fluid injection, follow this procedure when checking or servicing any part of spray system, when installing, cleaning or changing spray tips, and whenever you stop spraying.

1. Engage trigger safety.
2. Shut off pump or sprayer, disconnect power source, and open all air bleed valves.
3. Rotate spray valve knob counter-clockwise to FLUSH position.
4. Disengage trigger safety.

5. Hold metal part of gun firmly to side of a grounded metal pail. Trigger gun into paint pail to relieve pressure.
6. Engage trigger safety.
7. Open pump drain valve to relieve fluid pressure in pump, hose, and pole gun. Triggering in-line valve to relieve pressure may not be sufficient. Have container ready to catch drainage.

If you suspect the spray tip or hose is completely clogged or that pressure has not been fully relieved after following steps above, VERY SLOWLY loosen hose end coupling to relieve pressure gradually. Then loosen it completely. Clear tip or hose obstruction.

Swivel Repair Kit 244363

Replacing the Swivel (Fig. 1)

Disassembly

1. Remove nut (35b).
2. Slide module off stud (A).

NOTE: O-rings (35c and/or 45d) may remain on stud. Remove and discard old o-rings. Use new o-rings included in Swivel Repair Kit.

Reassembly

1. Place packing o-ring (35d) on base of stud.
2. Place one o-ring (35c) on base of stud (A).
3. Place second o-ring (35c) in base of swivel (35a).
4. Use a channel lock or vice to press stud (A) into swivel (35a) until threads on stud are pushed through the hole (B).

NOTE: You will feel resistance.

5. Reinstall nut (35b) and torque to 55–60 in-lbs. (6.2–6.8 N•m).

NOTE: Check the swivel for leaks. The o-rings can be damaged if they are not properly seated when the stud and swivel are pressed together (step 4).

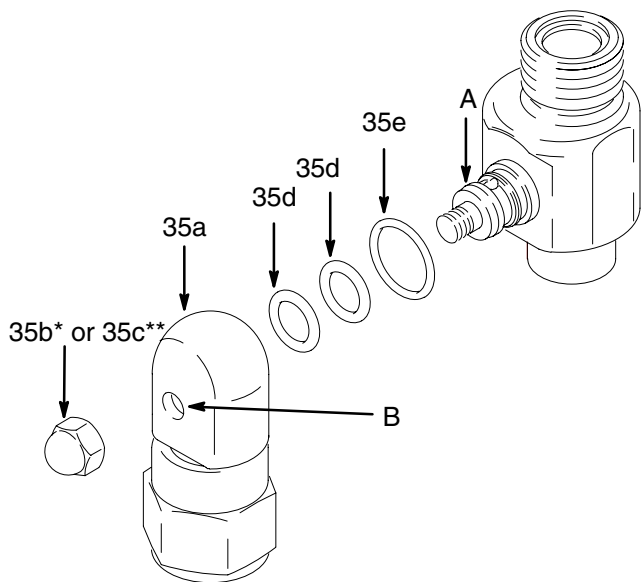


Fig. 1

Ref. No.	Part No.	Description	Qty.
35	244363	KIT, swivel repair	1
35a	244663	SWIVEL, inlet assembly	1
35b*	120189	NUT, cap	1
35c**	116424	NUT, cap	1
35d	107505	PACKING, o-ring	2
35e	109576	PACKING, o-ring	1

* Use 35b, 1/4-28 fine thread, for Series B CleanShot valves

** Use 35c, 1/4-20 coarse thread, for Series A CleanShot valves

This image shows a full page of blank, lined paper. It features approximately 20 evenly spaced horizontal grey lines across its entire width, providing a template for writing or drawing. The margins are consistent on all sides.

THE GRACO WARRANTY AND DISCLAIMERS

WARRANTY

Graco warrants all equipment manufactured by it and bearing its name to be free from defects in material and workmanship on the date of sale to the original purchaser for use. As purchaser's sole remedy for breach of this warranty, Graco will, for a period of twelve months from the date of sale, repair or replace any part of the equipment proven defective. This warranty applies only when the equipment is installed, operated and maintained in accordance with Graco's written recommendations.

This warranty does not cover, and Graco shall not be liable for, any malfunction, damage or wear caused by faulty installation, misapplication, abrasion, corrosion, inadequate or improper maintenance, negligence, accident, tampering, or substitution of non-Graco component parts. Nor shall Graco be liable for malfunction, damage or wear caused by the incompatibility with Graco equipment of structures, accessories, equipment or materials not supplied by Graco, or the improper design, manufacture, installation, operation or maintenance of structures, accessories, equipment or materials not supplied by Graco.

This warranty is conditioned upon the prepaid return of the equipment claimed to be defective to an authorized Graco distributor for verification of the claim. If the claimed defect is verified, Graco will repair or replace free of charge any defective parts. The equipment will be returned to the original purchaser transportation prepaid. If inspection of the equipment does not disclose any defect in material or workmanship, repairs will be made at a reasonable charge, which charges may include the costs of parts, labor and transportation.

DISCLAIMERS AND LIMITATIONS

The terms of this warranty constitute purchaser's sole and exclusive remedy and are in lieu of any other warranties (express or implied), **including warranty of merchantability or warranty of fitness for a particular purpose**, and of any non-contractual liabilities, including product liabilities, based on negligence or strict liability. Every form of liability for direct, special or consequential damages or loss is expressly excluded and denied. In no case shall Graco's liability exceed the amount of the purchase price. Any action for breach of warranty must be brought within two (2) years of the date of sale.

EQUIPMENT NOT COVERED BY GRACO WARRANTY

Graco makes no warranty, and disclaims all implied **warranties of merchantability and fitness for a particular purpose**, with respect to accessories, equipment, materials, or components sold but not manufactured by Graco. These items sold, but not manufactured by Graco (such as electric motor, switches, hose, etc.) are subject to the warranty, if any, of their manufacturer. Graco will provide purchaser with reasonable assistance in making any claim for breach of these warranties.

TO PLACE AN ORDER, contact your Graco distributor, or call this number to identify the distributor closest to you:
1-800-690-2894 Toll Free

*All written and visual data contained in this document reflect the latest product information available at the time of publication.
Graco reserves the right to make changes at any time without notice.*

mm 309517

This manual contains English

Graco Headquarters Minneapolis

International Offices: Belgium, Korea, China, Japan

GRACO INC. P.O. BOX 1441 MINNEAPOLIS, MN 55440-1441

www.graco.com

April 2002, Rev 9/2006