

Pneumatic and Hydraulic Vent Valve

308954F

EN

For venting pressurized lubricant in injector based, single-line parallel lubrication systems to enable injector reset for the next lube cycle. For professional use only.

Model Numbers:

115121 Vent Valve

242063 Hydraulic Vent Valve

Related Kits:

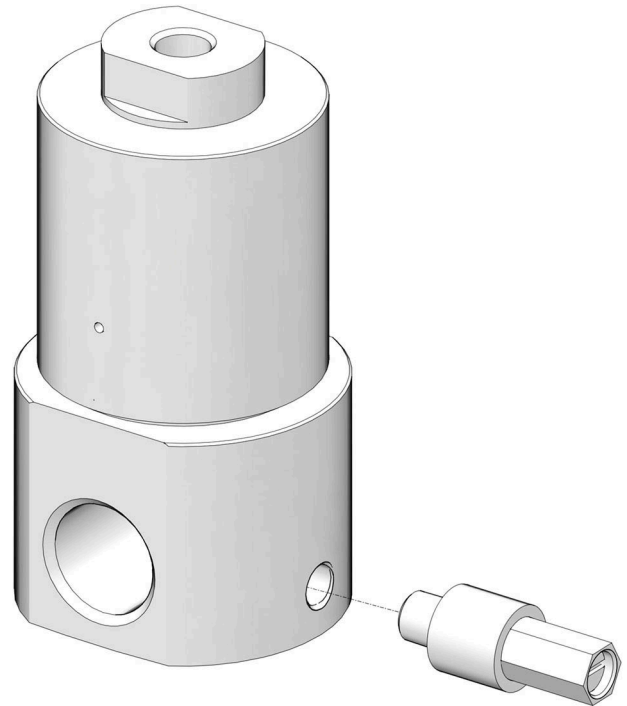
241572 Pneumatic Vent Valve and Installation Kit

243170 Hydraulic Vent Valve and Installation Kit



Important Safety Instructions

Read all warnings and instructions in this manual and in 50:1 Fire-Ball® 300 Pump Module before using the equipment. Save all instructions.



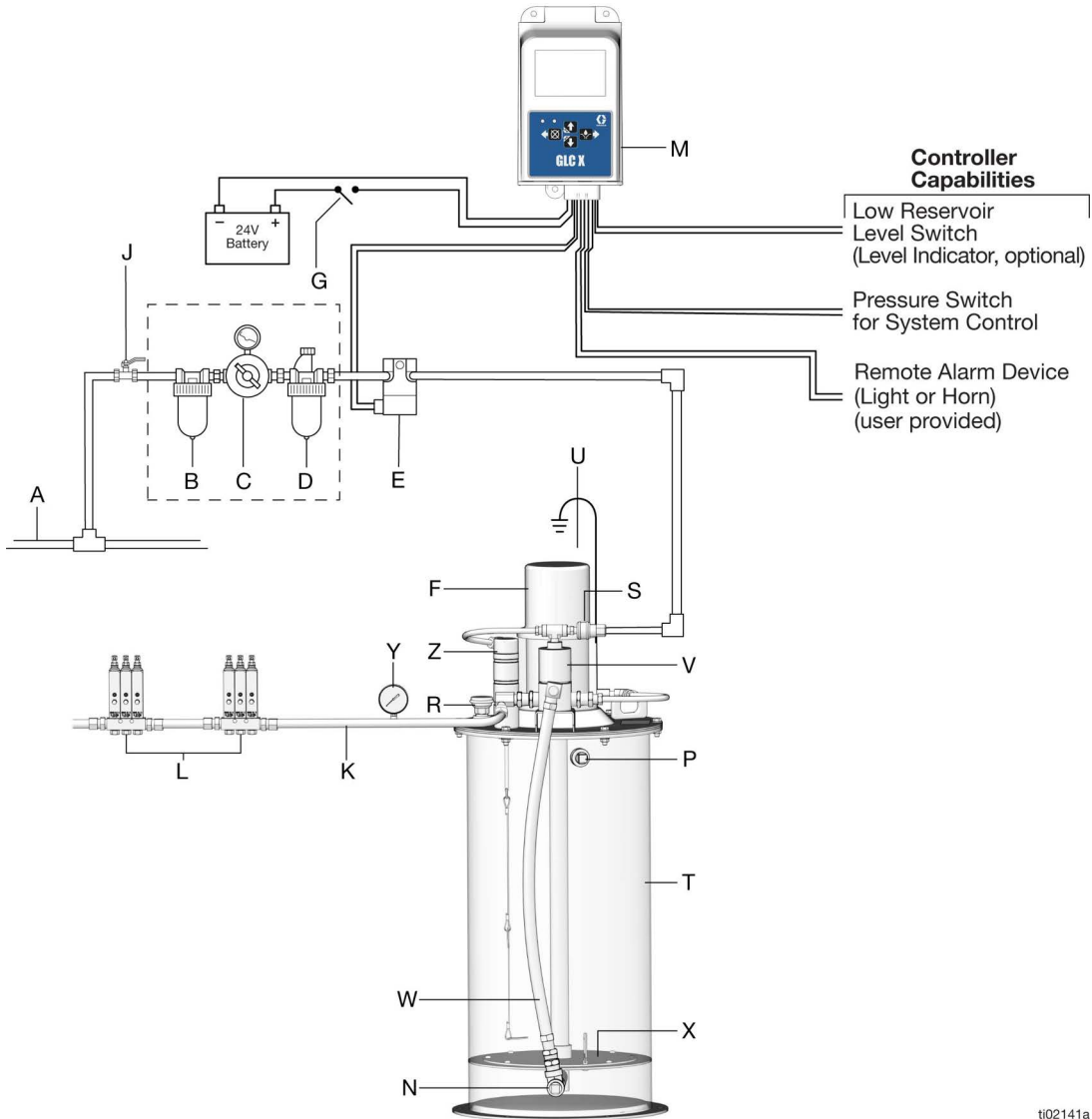
ti00657a

Related Manuals

Manual in English	Description
308955	50:1 Fire-Ball® 300 Pump Module
312349	10:1 Dyna-Star® Pump Modules

Typical Installation

The installation shown in FIG. 1 is only a guide for selecting and installing system components and accessories. Contact your Graco distributor for assistance in designing a system to meet your needs.



- Controller Capabilities**
- Low Reservoir Level Switch (Level Indicator, optional)
 - Pressure Switch for System Control
 - Remote Alarm Device (Light or Horn) (user provided)

FIG. 1: Pneumatic Typical Installation

The vent valve (W) is the only component provided.

Key:

- | | |
|--|---|
| A Main Air Supply | N Fill Port |
| B Air Filter | P Overflow Port |
| C Air Regulator | R Breather |
| D Air Lubricator | S Quick Disconnect Air Coupler |
| E Air Solenoid Valve | T Reservoir |
| F Pump | U Ground Wire (for non-mobile installation) |
| G Ignition Switch | V Vent Valve |
| J Bleed-type Master Air Valve (required) | W Vent Line |
| K High Pressure Lubricant Supply Lines | X Follower Plate (optional) |
| L Injector Banks | Y Pressure Gauge |
| M Lubrication Controller | Z Level Indicators (optional) |

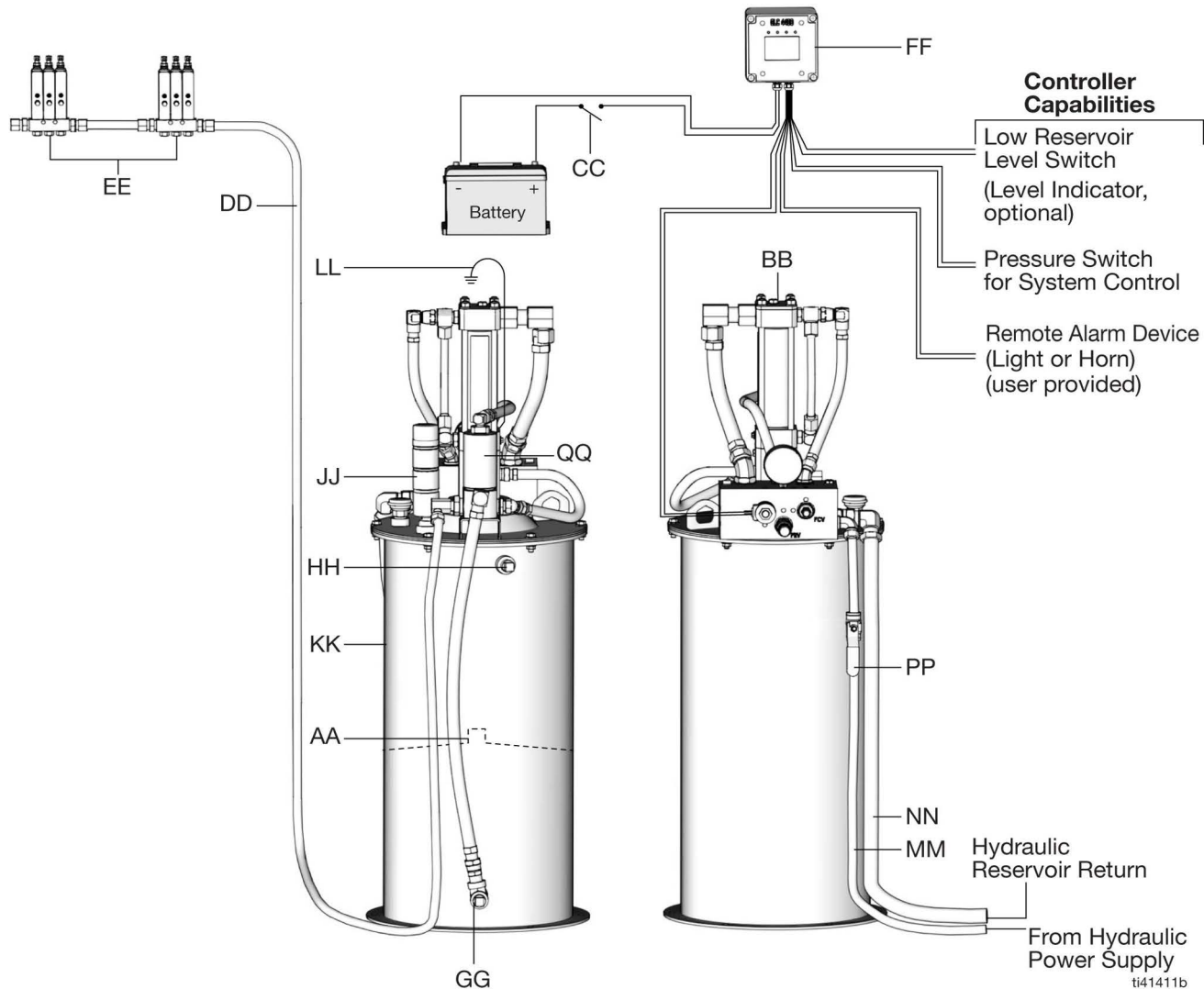


FIG. 2: Hydraulic Typical Installation

The vent valve (QQ) is the only component provided.


Key:


- AA Follower Plate (optional)
- BB Pump
- CC Ignition Switch*
- DD High Pressure Lubricant Supply Lines*
- EE Injector banks*
- FF Lubrication Controller
- GG Fill Port
- HH Overflow Port
- JJ Low Level Indicator (optional, separate kit)
- KK Reservoir
- LL Ground Wire (for non-mobile installation)*
- MM High Pressure Hydraulic Line*
- NN Hydraulic Tank Line*
- PP Ball Valve*
- QQ Vent Valve (Hydraulic)




*User supplied

Operation

Pressure Relief Procedure


 Follow the Pressure Relief Procedure whenever you see this symbol.


 **WARNING**

			
---	---	---	--

SKIN INJECTION HAZARD
 High-pressure fluid from dispensing device, hose leaks, or ruptured components will pierce skin. This may look like just a cut, but it is a serious injury that can result in amputation. **Get immediate surgical treatment.**

- Do not point dispensing device at anyone or at any part of the body.
- Do not put your hand over the fluid outlet.
- Do not stop or deflect leaks with your hand, body, glove, or rag.
- Follow the **Pressure Relief Procedure** when you stop dispensing and before cleaning, checking, or servicing equipment.
- Tighten all fluid connections before operating the equipment.
- Check hoses and couplings daily. Replace worn or damaged parts immediately.

 **WARNING**

				
---	---	---	---	---

- This equipment stays pressurized until pressure is manually relieved. To help prevent serious injury from pressurized fluid, such as skin injection, splashing fluid and moving parts, follow the Pressure Relief Procedure when you stop dispensing and before cleaning, checking, or servicing the equipment.
- To prevent system over pressurization, a pressure relief valve (115122) must be used in conjunction with all vent valve installations. Failure to comply with this warning could result in serious injury.

The reference letters in the following instructions refer to **Typical Installation**, page 2.

1. Disconnect the power from the lubrication controller (M).
2. Disable the air supply (A) to the pump using one of the following:
 - Close the bleed-type air master air valve (J); or
 - Disconnect the quick disconnect air coupler (S) from the tee on the vent valve (V).

Recycling and Disposal


End of Product Life

At the end of the product's useful life, dismantle and recycle it in a responsible manner.

- Perform the **Pressure Relief Procedure**, page 4.
- Drain and dispose of fluids according to applicable regulations. Refer to the material manufacturer Safety Data Sheet.

Repair

For the reference numbers in the following instructions, refer to **Parts**, page 6.

 WARNING				
				
<ul style="list-style-type: none"> This equipment stays pressurized until pressure is manually relieved. To help prevent serious injury from pressurized fluid, such as skin injection, splashing fluid and moving parts, follow the Pressure Relief Procedure when you stop dispensing and before cleaning, checking, or servicing the equipment. To prevent system over pressurization, a pressure relief valve (115122) must be used in conjunction with all vent valve installations. Failure to comply with this warning could result in serious injury. 				

Disassemble

1. Disconnect power to the equipment.
2. Relieve pressure following the **Pressure Relief Procedure**, page 4.
3. Remove the fasteners.
4. Disconnect the piping.
5. Secure the flats at the top of the air cylinder (9), horizontally, in a vise.
6. Unscrew the vent valve body (3) from the air cylinder (9).
7. Insert a push pin into the top of the air cylinder (9) and remove the piston (4) from the air cylinder (9).
8. Remove the air piston packing (5) from the piston (4).
9. Unscrew the valve seat (7) from the vent valve body (3).

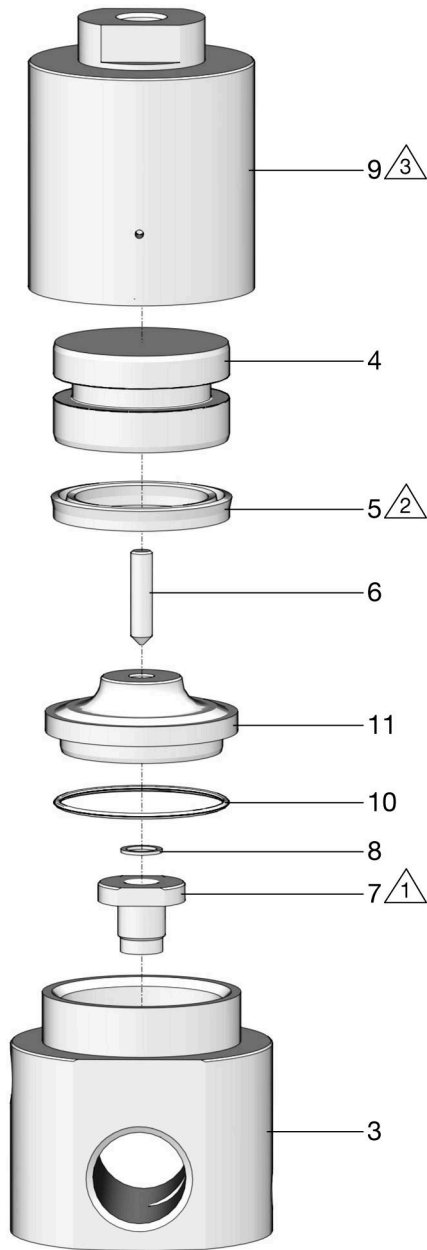
NOTE: Examine all parts. If damaged, replace using parts from Vent Valve Repair Kit 241571.

Assemble

1. Replace and screw the valve seat (7) to the top of the vent valve body (3), and torque to 20 to 25 ft-lbs (27.1 to 33.9 N•m).
2. Press the needle (6) into the packing retainer (11), point the tip into the side and press pin in as shown.
3. Insert the air piston packing (5) into the piston (4), lips face up.
4. Install the piston (4) into the air cylinder (9).
5. Insert the packing retainer (11) into the air cylinder (9).
6. Replace and screw the air cylinder (9) into the vent valve body (3), and torque to 100 to 110 ft-lbs (135.6 to 149.1 N•m).
7. Remove the air cylinder (9) from the vise.

Parts

Model No. 115121



Ref.	Part	Description	Qty.
1	115121	Vent Valve	1
2	115122	Pressure Relief Valve	1
3		Vent Valve Body	1
4	114922	Piston	1
5♦	114926	Air Piston Packing (lips face up)	1
6♦		Needle	1
7♦		Valve Seat	1
8♦		Check Seat Gasket	1
9	114921	Air Cylinder	1
10♦		O-Ring, fluoroelastomer	1
11♦		Packing Retainer	1

♦ Included in Vent Valve Repair Kit 241571

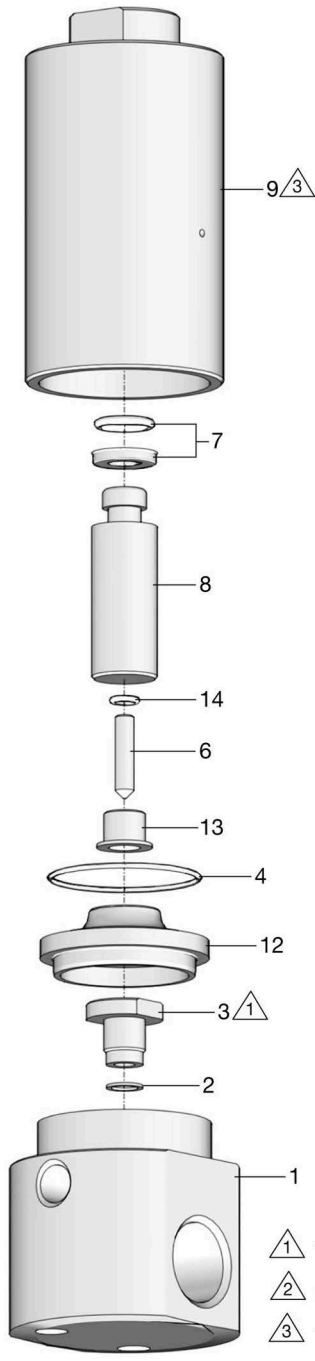
1 Torque to 20-25 ft-lb (28-33 N•m)


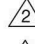
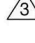
2 Lips face up

3 Torque to 100-110 ft-lb (136-149 N•m)

ti00658a

Model No. 242063



-  Torque to 20-25 ft-lb (28-33 N•m)
 -  Lips face down
 -  Torque to 100-110 ft-lb (136-149 N•m)
- ti02095a

Ref.	Part	Description	Qty.
1		Vent valve body	1
2†	114925	Copper gasket	1
3†	114924	Valve seat	1
4	115039	O-ring	1
6†	114923	Valve needle	1
7		Packing, u-cup	1
8†		Piston, hydraulic	1
9	195625	Hydraulic cylinder	1
12†		Packing retainer	1
13		Valve bushing	1
14†	115010	O-ring	1

† Included in Repair Kit 243188

Technical Specifications

Vent Valve - 115121		
	US	Metric
Maximum air pressure	120 psi	0.8 MPa, 8 bar
Maximum fluid pressure	3800 psi	26 MPa, 262 bar
Fluid-side wetted parts	Carbon steel, fluoroelastomer	
Air-side wetted parts	Aluminum, buna-N	
Recommended fluids	Lubricant N.L.G.I. Grade #2 or lighter	
Dimensions		
Height	4.25 in.	10.79 cm
Width	2.25 in.	5.715 cm

Hydraulic Vent Valve - 242063		
	US	Metric
Max hydraulic pressure	450 psi	3.1 MPa, 31bar
Max lubricant pressure	4500 psi	31 MPa, 310 bar
Lubrication side wetted parts	Carbon steel	
Hydraulic side wetted parts	Aluminum, buna-N	
Recommended fluids	Grease grades N.L.G.I. Grade #2 or lighter	
Dimensions		
Height	6 in.	15.9 cm
Width	2.59 in.	6.6 cm

California Proposition 65

CALIFORNIA RESIDENTS

 **WARNING:** Cancer and reproductive harm – www.P65warnings.ca.gov.

Graco Standard Warranty

Graco warrants all equipment referenced in this document which is manufactured by Graco and bearing its name to be free from defects in material and workmanship on the date of sale to the original purchaser for use. With the exception of any special, extended, or limited warranty published by Graco, Graco will, for a period of twelve months from the date of sale, repair or replace any part of the equipment determined by Graco to be defective. This warranty applies only when the equipment is installed, operated and maintained in accordance with Graco's written recommendations.

This warranty does not cover, and Graco shall not be liable for general wear and tear, or any malfunction, damage or wear caused by faulty installation, misapplication, abrasion, corrosion, inadequate or improper maintenance, negligence, accident, tampering, or substitution of non-Graco component parts. Nor shall Graco be liable for malfunction, damage or wear caused by the incompatibility of Graco equipment with structures, accessories, equipment or materials not supplied by Graco, or the improper design, manufacture, installation, operation or maintenance of structures, accessories, equipment or materials not supplied by Graco.

This warranty is conditioned upon the prepaid return of the equipment claimed to be defective to an authorized Graco distributor for verification of the claimed defect. If the claimed defect is verified, Graco will repair or replace free of charge any defective parts. The equipment will be returned to the original purchaser transportation prepaid. If inspection of the equipment does not disclose any defect in material or workmanship, repairs will be made at a reasonable charge, which charges may include the costs of parts, labor, and transportation.

THIS WARRANTY IS EXCLUSIVE, AND IS IN LIEU OF ANY OTHER WARRANTIES, EXPRESS OR IMPLIED, INCLUDING BUT NOT LIMITED TO WARRANTY OF MERCHANTABILITY OR WARRANTY OF FITNESS FOR A PARTICULAR PURPOSE.

Graco's sole obligation and buyer's sole remedy for any breach of warranty shall be as set forth above. The buyer agrees that no other remedy (including, but not limited to, incidental or consequential damages for lost profits, lost sales, injury to person or property, or any other incidental or consequential loss) shall be available. Any action for breach of warranty must be brought within two (2) years of the date of sale.

GRACO MAKES NO WARRANTY, AND DISCLAIMS ALL IMPLIED WARRANTIES OF MERCHANTABILITY AND FITNESS FOR A PARTICULAR PURPOSE, IN CONNECTION WITH ACCESSORIES, EQUIPMENT, MATERIALS OR COMPONENTS SOLD BUT NOT MANUFACTURED BY GRACO. These items sold, but not manufactured by Graco (such as electric motors, switches, hose, etc.), are subject to the warranty, if any, of their manufacturer. Graco will provide purchaser with reasonable assistance in making any claim for breach of these warranties.

In no event will Graco be liable for indirect, incidental, special or consequential damages resulting from Graco supplying equipment hereunder, or the furnishing, performance, or use of any products or other goods sold hereto, whether due to a breach of contract, breach of warranty, the negligence of Graco, or otherwise.

FOR GRACO CANADA CUSTOMERS

The Parties acknowledge that they have required that the present document, as well as all documents, notices and legal proceedings entered into, given or instituted pursuant hereto or relating directly or indirectly hereto, be drawn up in English. Les parties reconnaissent avoir convenu que la rédaction du présente document sera en Anglais, ainsi que tous documents, avis et procédures judiciaires exécutés, donnés ou intentés, à la suite de ou en rapport, directement ou indirectement, avec les procédures concernées.

Graco Information

For the latest information about Graco products, visit www.graco.com.

For patent information, see www.graco.com/patents.

TO PLACE AN ORDER, contact your Graco distributor or call to identify the nearest distributor.

Phone: 612-623-6928 **or Toll Free:** 1-800-533-9655, **Fax:** 612-378-3590

All written and visual data contained in this document reflects the latest product information available at the time of publication. Graco reserves the right to make changes at any time without notice.

Original instructions. This manual contains English. MM 308945

Graco Headquarters: Minneapolis

International Offices: Belgium, China, Japan, Korea

GRACO INC. AND SUBSIDIARIES • P.O. BOX 1441 • MINNEAPOLIS MN 55440-1441 • USA
Copyright 1999, Graco Inc. All Graco manufacturing locations are registered to ISO 9001.

www.graco.com
Revision F, May 2024