

## Repair Kits for Silver and Flex Guns

Part No. 218-181, Silver Gun Body

Part No. 218-642, Flex Gun Body

Part No. 170-668, Trigger

### WARNING

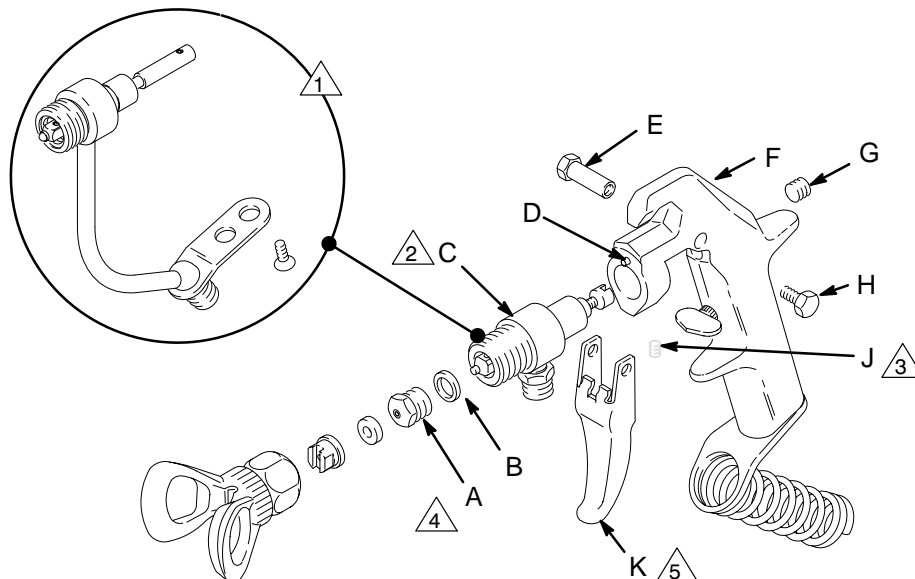
To reduce the risk of serious bodily injury, including fluid injection, splashing fluid or solvent in the eyes or on the skin, or injury from moving parts or electric shock, always follow this procedure whenever you shut off the sprayer, when checking or servicing any part of the spray system, when installing, cleaning or changing spray tips, and whenever you stop spraying.

1. Engage the gun safety latch.
2. Shut off the power to the pump and close any bleed-type master air valves.
3. Disengage the gun safety latch.
4. Hold a metal part of the gun firmly to the side of a grounded metal pail, and trigger the gun to relieve pressure.
5. Engage the gun safety latch.
6. Open the pressure drain valve, having a container ready to catch the drainage. Leave the valve open until you are ready to spray again.

*If you suspect that the spray tip or hose is completely clogged, or that pressure has not been fully relieved after following the steps above, VERY SLOWLY loosen the tip guard retaining nut or hose end coupling to relieve pressure gradually, then loosen completely. Now clear the tip or hose.*

Replacing the body See Fig 1.

1. Relieve pressure.
2. Disconnect the hose. Remove the tip guard assembly.
3. Remove the trigger (K), plug (G), diffuser-seat (A), gasket (B) and setscrew (J). Pull the housing (C) off the gun body.
4. Using the pin (D) for alignment, push the housing (C) onto the gun body (F). Install the setscrew (J) and torque it to 30-40 in-lb (3.4-4.5 N.m).
5. Install the trigger (K).
6. Put the gasket (B) on the diffuser-seat (A).
7. While squeezing the trigger, screw the diffuser-seat into the fluid housing (C). Release the trigger. Finish tightening the diffuser-seat to 20-25 ft-lb (27-34 N.m). DO NOT install the plug (G) yet!
8. Adjust the needle before operating the gun. See the next page.



- 1 Silver gun fluid housing
- 2 Flex gun fluid housing
- 3 Torque to 30-40 in-lb (3.4-4.5 N.m)
- 4 Torque to 20-25 ft-lb (27-34 N.m)
- 5 P/N 170-668

Fig. 1

## Adjusting the needle See Fig 2.

### WARNING

Proper adjustment of the needle is essential to be sure the trigger safety latch makes the gun inoperative when engaged. Improper adjustment may allow the gun to be triggered, even with the trigger safety latch engaged, resulting in serious bodily injury, including fluid injection and splashing in the eyes or on the skin.

1. Hold the gun with the nozzle straight up so the trigger falls onto the safety latch. Insert a flat blade screwdriver into the rear port of the gun until it engages with the slot (L) at the back of the needle.

**NOTE:** If the trigger does not touch the latch, turn the needle clockwise until it does.

2. With light pressure, hold the trigger against the latch. Turn the needle counterclockwise until there is enough tension for you to **feel** and **see** the trigger raise slightly off the latch.
3. Now turn the needle back (clockwise) 3/4 turn.
4. Install the plug (G).
5. To test the adjustment: Connect the fluid hose and start the pump. Release the trigger safety latch and trigger the gun into a grounded waste container.

- Release the trigger – the fluid should stop flowing immediately.
- Engage the safety latch again and try to trigger the gun – no fluid should flow.

If the gun failed either test, relieve pressure, disconnect the hose, and adjust the needle again.

6. Screw the tip guard assembly tightly onto the gun. Tighten with a wrench.

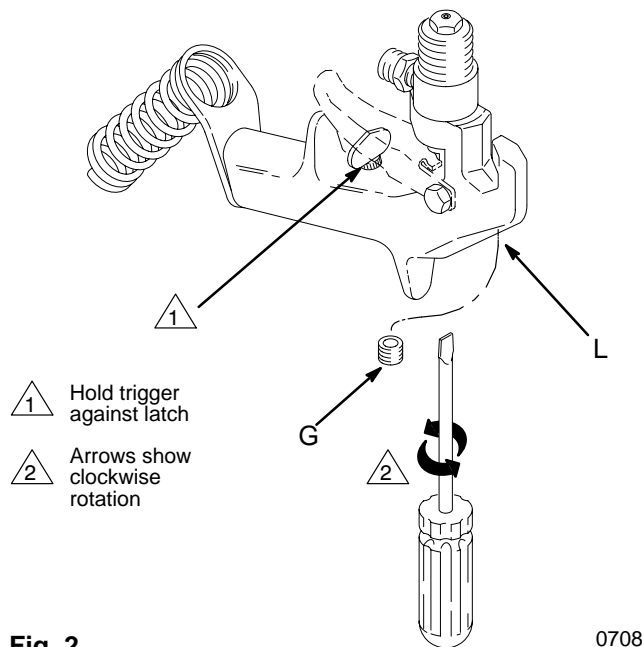


Fig. 2

0708

**Sales Offices:** Atlanta, Chicago, Dallas, Detroit, Los Angeles, Mt. Arlington (N.J.)  
**Foreign Offices:** Canada; England; Korea; Switzerland; France; Germany; Hong Kong; Japan

**GRACO INC. P.O. BOX 1441 MINNEAPOLIS, MN 55440-1441**

PRINTED IN U.S.A. ©COPYRIGHT 1983 Graco Inc. 307-641 1983, Revised 10/93