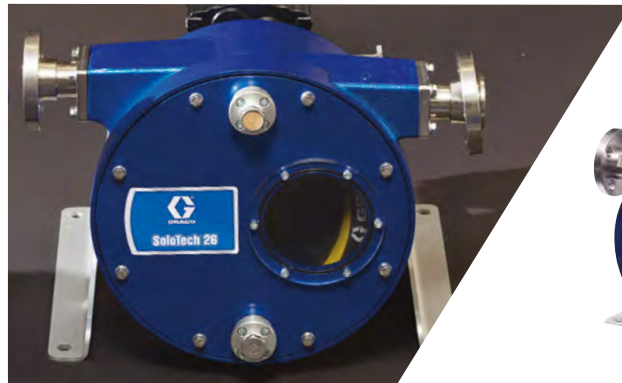




# PROCESS EQUIPMENT

Pumping Solutions for  
Process Industries



PROVEN QUALITY. LEADING TECHNOLOGY.



MADE IN THE USA WITH  
GLOBAL COMPONENTS

# GRACO'S PUMP SOLUTIONS HAVE YOU COVERED

Experienced customers know the difference. Graco professional pumps are solid investments that perform reliably, year after year.

## TRUST YOUR BUSINESS AND REPUTATION TO GRACO

Graco is committed to providing the highest quality products available, backed by high marks in customer satisfaction.

## AMERICAN BUILT QUALITY SINCE 1926

100% factory-tested and field-proven Graco professional pumps are manufactured, assembled and supported in the USA.

## INDUSTRY-LEADING SOLUTIONS

Graco offers a wide range of pump sizes and materials to deliver industry-leading solutions for nearly any fluid transfer application.



### HUSKY® Air-Operated Double Diaphragm Pumps

- Flow rates up to 300 gpm
- Rugged construction resists corrosion for reliable performance and long life in heavy duty transfer applications



### QUANTM™ Electric Double Diaphragm Pumps

- Flow rates up to 120 gpm
- Experience the benefits of an AODD with increased efficiency and significantly quieter operation



### CHEMSAFE™ Chemical Pumps

- Flow rates up to 100 gpm
- Ideal for pumping highly corrosive chemicals



### SOLOTECH™ Peristaltic Hose Pumps

- Flow rates up to 18 gpm
- Single roller design provides more flow per revolution than conventional designs to deliver a long-lasting hose life



### HYDRA-CLEAN® High Pressuring Cleaning

- Pressures up to 4500 psi
- Ideal for hazardous locations and pumping dirty water



### FAST-FLO® Piston Transfer Pumps

- Pressures up to 100 psi
- Available for either drum transfer or wall mount siphon feed applications. Ideal for lower viscosity fluids

# THE HUSKY ADVANTAGE

Our Husky air-operated double diaphragm pumps are loaded with features to help you get the job done right, every time, and are built to save you money. Each pump is ruggedly constructed to deliver a long, trouble-free product life.



## HEAVY-DUTY DESIGN

Rugged construction delivers reliable performance and long life

## MATERIAL COMPATIBILITY

Wide range of materials available to handle virtually any fluid in need of transfer

## RUNS DRY

Seal-less design eliminates leaking and failures due to run-dry pump conditions

## LEAK DETECTOR OPTIONS

Reduce risk with a leak detector and know immediately when your product is leaking



## FLOW RATES

Flow rates range from 1 to 300 gpm

## LUBE-FREE MAINTENANCE

Fewer moving parts and complete external serviceability

## STALLS UNDER PRESSURE

Prevents pump failures from clogged lines or closed valves

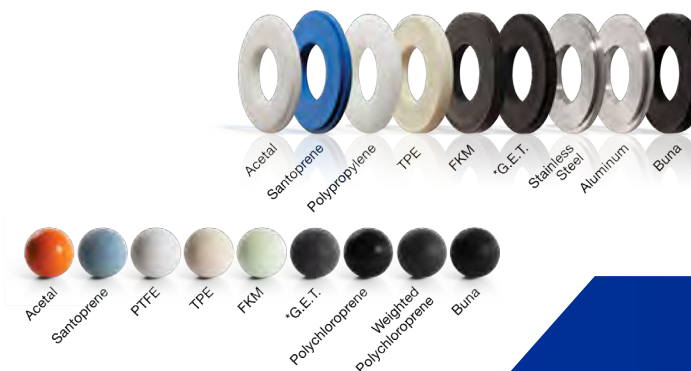
## SELF-PRIMING

Strong suction capabilities significantly reduces chances of damaging your system

# THE RIGHT OPTION FOR EVERY JOB

Choose from a wide selection of materials to handle numerous applications, including corrosive and abrasive fluid transfer. Easily customize your fluid sections and get the best pump for the job.

PUMP SIZE	Max. Flow Rate	Max. Fluid Pressure	Connection Size	Max. Pumpable Solids
205	5 gpm (18.9 lpm)	100 psi (7 bar, 0.7 MPa)	1/4 in.	0.06 in. (1.5 mm)
307	6.5 gpm (24.6 lpm)	100 psi (7 bar, 0.7 MPa)	3/8 in.	1/16 in. (1.6 mm)
515	15 gpm (57 lpm)	100 psi (7 bar, 0.7 MPa)	1/2 in.	3/32 in. (2.5 mm)
716	16 gpm (61 lpm)	100 psi (7 bar, 0.7 MPa)	3/4 in.	3/32 in. (2.5 mm)
1050	50 gpm (189 lpm)	125 psi (8.6 bar, 0.86 MPa)	1 in.	1/8 in. (3.2 mm)
1590	100 gpm (378.5 lpm)	120 psi (8.4 bar, 0.84 MPa)	1.5 in.	3/16 in. (4.8 mm)
15120	115 gpm (435 lpm)	125 psi (8.6 bar, 0.86 MPa)	1.5 in. (38 mm) ANSI/DIN flange	1/4 in. (6.3 mm)
2150	150 gpm (568 lpm)	120 psi (8 bar, 0.8 MPa)	2 in.	1/4 in. (6.3 mm)
2150LP	150 gpm (568 lpm)	120 psi (8 bar, 0.8 MPa)	2 in.	1.8 in (46 mm)
2200	200 gpm (757 lpm)	125 psi (8.6 bar, 0.86 MPa)	2 in. (50mm) ANSI/DIN flange	3/8 in. (9.5 mm)
3250	240 gpm (908 lpm)	125 psi (8.6 bar, 0.86 MPa)	3 in.	3/8 in. (9.5 mm)



\*G.E.T. = Graco Engineered Thermoplastic

**FIND THE RIGHT PUMP FOR YOUR APPLICATION**



graco.com/Pumphouse

# QUANTM ELECTRIC DIAPHRAGM PUMPS

## HIGHEST PRODUCTIVITY & ENERGY EFFICIENCY

Graco's QUANTM electric-operated double diaphragm (EODD) pumps combine the advantages of an AODD pump like self-priming, stalling under pressure, and increased diaphragm life with the efficiency of an electric drive.

### ELECTRIC DRIVE

- Up to 80% more efficient than AODD pumps
- Eliminate the requirement for compressed air, relieving the load on air compressors

### QUIET OPERATION

- Eliminating compressed air drives significant noise reduction
- 23% reduction in sound pressure over standard AODD pumps
- 90% decrease in sound intensity

### INTEGRATED CONTROL

- Control the pump with the turn of a dial
- Features intelligent Auto-Prime mode for faster priming
- IP66 wash-down rated

### AUTOMATION

- Equipped with an I/O port for remote or PLC pump control to start or stop the pump and adjust speed or to add a level sensor

### SMALL FOOTPRINT & ENVELOPE

- Similar in size to Graco's AODD pumps
- Removal of the gearbox reduces footprint compared to other electric options



PUMP SIZE	Max. Flow Rate	Max. Fluid Pressure	Connection Size	Max. Pumpable Solids
<b>i30</b>	30 gpm (114 lpm)	100 psi (6.89 bar, 0.69 MPa)	1 in.	0.125 in. (3.2 mm)
<b>i80</b>	80 gpm (300 lpm)	100 psi (6.89 bar, 0.69 MPa)	1.5 in.	0.19 in. (4.8 mm)
<b>i120</b>	120 gpm (454 lpm)	60 psi (4.1 bar, 0.41 MPa)	2 in.	0.25 in. (6.35 mm)
<b>i120LP</b>	120 gpm (454 lpm)	60 psi (4.1 bar, 0.41 MPa)	2 in.	1.8 in. (46 mm)

# DIAPHRAGM PUMP ACCESSORIES

## OPTIMIZE YOUR TRANSFER SYSTEM

Graco offers equipment durably constructed equipment to support your industrial processing needs. Protect your system and enhance your equipment with these accessories.

### PUMP CARTS

- Mobilize your Fluid Transfer**
- Mounting patterns available for most pump configurations
  - Enables flexibility for fluid transfer throughout your facility



### LEAK DETECTORS

- Simplify Maintenance**
- Monitor equipment for diaphragm rupture or other leaks
  - Available for both standard and hazardous location models

### PULSATION DAMPENERS

- Extend the Life of your System**
- Minimize noise, plumbing damage and product degradation
  - Ensure a smooth, steady flow with reduced cavitation and foaming



Pulsation Dampeners			
CONFIGURATIONS	Materials of Construction	Diaphragm Options	Connection Type
<b>1 in.</b>	Aluminum, Polypropylene	Buna-N, PTFE/EPDM Overmold, PTFE/Santoprene 2-piece, Santoprene	Metal - NPT/BSPT Plastic - Flange
<b>1.5 in.</b>	Aluminum, Polypropylene	Buna-N, PTFE/EPDM Overmold, PTFE/Santoprene 2-piece, Santoprene	Metal - NPT/BSPT Plastic - Flange
<b>2 in.</b>	Aluminum, Polypropylene	Buna-N, FKM (Viton), PTFE/EPDM Overmold, PTFE/Santoprene 2-piece, Santoprene	Metal - NPT/BSPT Plastic - Flange

# CHEMSAFE CHEMICAL PUMPS

## IDEAL FOR THE MOST CHALLENGING FLUIDS

100% PTFE corrosion-resistant fluid paths, ChemSafe pumps are configured to meet most, temperature and chemical compatibility requirements.

### LEAK-FREE TECHNOLOGY FOR EASE OF USE

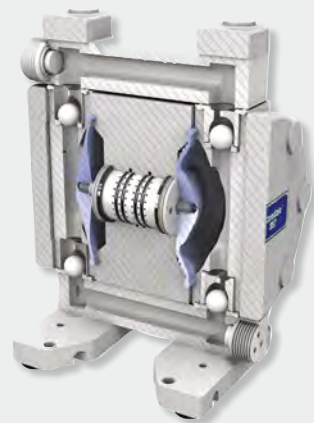
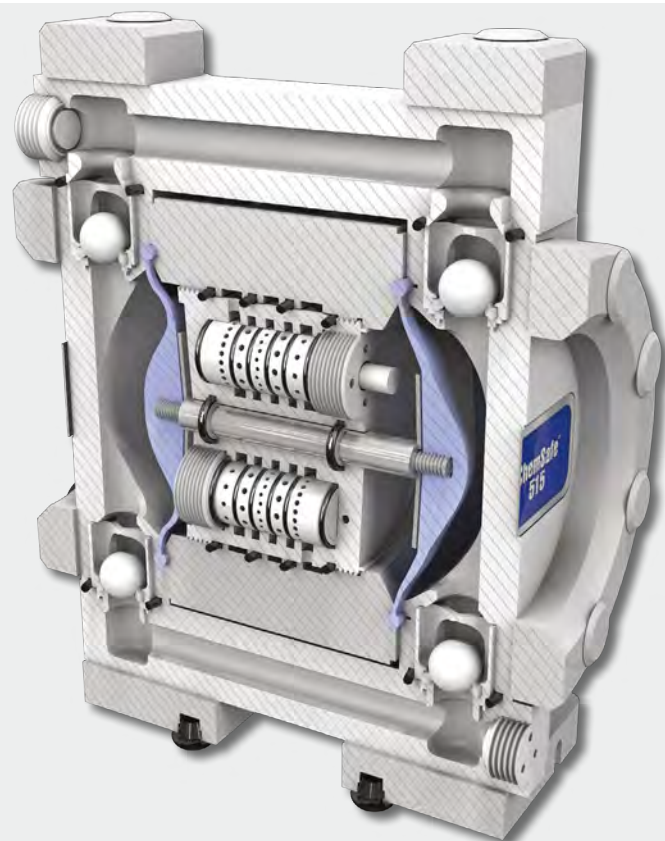
- Dual force, tie-bolt design ensures chemical containment and reduces cold flow
- Machined fluid components

### CORROSION-RESISTANT DESIGN

- 100% PTFE fluid paths
- No exposed metals

### USER-FRIENDLY PARALLEL PILOT SHIFTING

- Easy to maintain
- Stall-free design
- Reduced icing air system



PUMP SIZE	Max. Flow Rate	Max. Fluid Pressure	Connection Size	Max. Pumpable Solids
205	2.5 gpm (9.5 lpm)	100 psi (7 bar, 0.7 MPa)	1/4 in.	0.06 in. (1.5 mm)
307	6.7 gpm (25.4 lpm)	100 psi (7 bar, 0.7 MPa)	3/8 in.	0.08 in. (2 mm)
515	16 gpm (60.6 lpm)	100 psi (7 bar, 0.7 MPa)	1/2 in.	0.16 in. (4 mm)
1040	39 gpm (146 lpm)	100 psi (7 bar, 0.7 MPa)	1 in.	0.24 in. (6 mm)
1590	99.5 gpm (376 lpm)	100 psi (7 bar, 0.7 MPa)	1.5 in.	0.32 in. (8 mm)

# SOLOTECH PERISTALTIC HOSE PUMPS

## MAXIMUM MATERIAL PRODUCTIVITY

With only the hose in contact with the fluid being pump and no check valves in line, Graco's SoloTech peristaltic pumps are ideal for metering and transferring materials that other pumps cannot handle.



### EFFICIENT PUMPING ACTION

- One hose compression per revolution extends hose life

### LOWEST MAINTENANCE

- No valves, seals or glands

### PUMPS WIDEST RANGE OF MATERIAL

- Patented design ensures only the hose comes in contact with fluid
- Easily pumps abrasive, corrosive, shear sensitive, and gas entrapped fluids

### REVERSIBLE

- Pumps can be used to empty lines or clear blockages

### EXTENDED HOSE LIFE

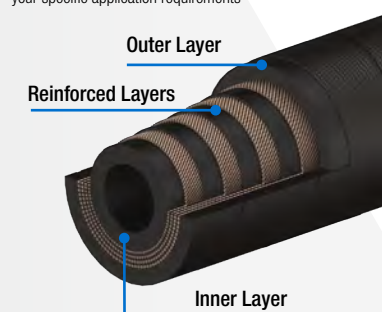
- Only one hose compression per revolution

### SINGLE ROLLER DESIGN

- Compresses through a full 360° rotation, reducing temperature and friction
- Delivers longest hose life

HOSE MATERIALS	STRIPE COLOR / INSIDE COLOR	MAX FLUID TEMPERATURE	APPLCIATION AREA
Natural Rubber	None / Black	160° F (71° C)	Abrasives
Chlorosulfonated Polyethylene (CSM)	Orange / Black	250° F (121° C)	Highly Corrosive Chemicals
Nitrile	Yellow / Black	250 F (121° C)	Oils or Oily Products
Ethylene Propylene (EPDM)	Blue / Black	220 F (104° C)	Corrosive Chemical

Choose from 4 different hose materials to meet your specific application requirements



PUMP SIZE	Flow Rate Range	Connection Size - Flange OD	Hose ID
i6	0.007-0.25 gpm (0.026-0.95 lpm)	3.54 in. (90 mm)	0.24 in. (6 mm)
i10	0.013-0.67 gpm (0.049-2.5 lpm)	3.54 in. (90 mm)	0.39 in. (10 mm)
i16	0.039-1.4 gpm (0.148-5.3 lpm)	3.54 in. (90 mm)	0.63 in. (16 mm)
i23	0.09-4.5 gpm (0.34-17 lpm)	4.25 in. (108 mm)	0.91 in. (23 mm)
i26	0.23-9.8 gpm (0.757-37.1 lpm)	4.25 in. (108 mm)	1.02 in. (26 mm)
i32	0.373-17.7 gpm (1.4-67 lpm)	4.92 in. (125 mm)	1.26 in. (32 mm)

# FAST-FLO PISTON TRANSFER PUMPS

## DURABLE, LONG LASTING PISTON PUMP

Fast-Flo air-operated piston pumps deliver a smooth, reliable flow. Drum lengths and stubby models are available for either drum transfer or wall mount siphon feed applications. Ideal for low to medium viscosity fluids.

### IMMERSED INLET

- For faster priming of heavier fluids

### AIR-POWERED

- For high reliability and low cost

### VISCOSITY OPTIONS

- Disk check options for lower viscosity fluids
- Piston style lower options accommodate higher viscosities

### SUBMERSIBLE SUCTION TUBE

- Eliminates need for suction pipe or hose

### LIGHT WEIGHT

- Allows for easy transport and drum insertion

### RUGGED DESIGN

- For years of dependable service



### FAST-FLO AIR MOTOR

Easily control the flow rate by regulating the air supply. Best suited for low flow applications moving low to medium viscosity fluids.

UL listed options available for use with lacquers, paints, varnishes, thinners, etc.

PUMP RATIO	Maximum Working Pressure	Fluid Inlet Size	Fluid Outlet Size
1:1	180 psi (12.4 bar, 1.2 MPa)	1.5 in.	3/4 in.

# HYDRA-CLEAN PRESSURE WASHERS

## ON-DEMAND HIGH PRESSURE SOLUTIONS

Ideal for use in a variety of in-plant cleaning applications and can be used with hot or cold water, detergents or strong chemical solutions up to 200°F (93°C). Available in wall-mount and cart-mount options.



### HIGH-RATIO PRESSURE WASHER

#### Unmatched Cleaning Power

- Up to 4500 PSI
- Tackle the toughest cleaning challenges

### CLEAN HAZARDOUS MATERIALS

- Clean oil and chemical spills
- Remove materials without exposing workers to dangerous situations

### KEEP YOUR EQUIPMENT CLEAN

#### Use in a Variety of Industries

- Remove grease, oil or other contaminants
- Help extend your equipment's lifespan

PUMP RATIO	Maximum Fluid Flow Rate	Maximum Fluid Working Pressure	Maximum Air Inlet Pressure
6:1	4.2 gpm (16 lpm)	620 psi (42.7 bar, 4.2 MPa)	100 psi (7 bar, 0.7 MPa)
12:1	4.15 gpm (15.71 lpm)	1250 psi (86.2 bar, 8.6 MPa)	100 psi (7 bar, 0.7 MPa)
23:1	4.92 gpm (18.62 lpm)	2275 psi (156.9 bar, 15.7 MPa)	100 psi (7 bar, 0.7 MPa)
30:1	5.03 gpm (19.04 lpm)	3065 psi (211.3 bar, 21.1 MPa)	100 psi (7 bar, 0.7 MPa)
40:1	4.71 gpm (17.83 lpm)	4000 psi (275.8 bar, 27.6 MPa)	100 psi (7 bar, 0.7 MPa)
45:1	0.8 gpm (3 lpm)	4500 psi (310 bar, 31 MPa)	100 psi (7 bar, 0.7 MPa)

# APPLICATION OVERVIEW

## CHEMICAL

Detergent cleaning, polymer, fertilizer, chemical blending, semiconductor, oil & gas (condensate and oil recycling)

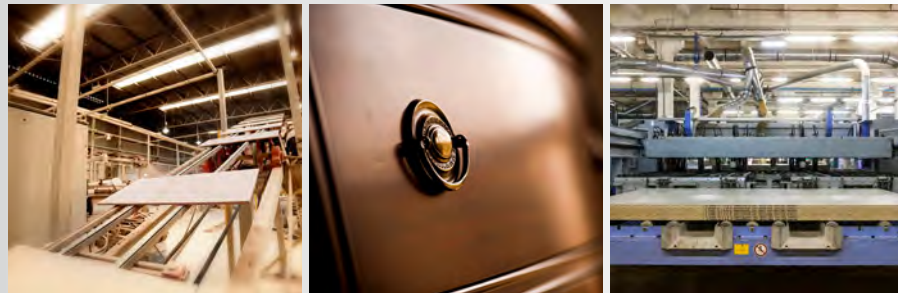
- Husky
- QUANTM
- SoloTech
- ChemSafe
- Hydra-Clean



## BUILDING MATERIALS

Wood preservation, engineered wood products, roll coating (paint and adhesive)

- Husky
- QUANTM
- Fast-Flo



## PULP & PAPER

Paper manufacturing and corrugated cardboard production

- Husky
- QUANTM



## WATER TREATMENT

Chemical dosing, polymer, lime slurry

- SoloTech
- Husky
- QUANTM
- Hydra-Clean



## DEWATERING

Sludge, sump evacuation and waste fluids

- Husky
- QUANTM



## PAINT

Paint delivery systems, solvent transfer, moisture sensitive material handling and paint circulation

- Husky
- QUANTM
- Fast-Flo
- Hydra-Clean





## OUR BRAND PROMISE TO YOU

Since 1926, **innovation**, **quality** and **A+ Service** have been at the center of Graco.

### Experience Innovation

Our focus on innovation results in products and equipment that lead the industry with technologically-advanced features, pioneering design, high performance and unparalleled reliability. In short, innovation is how you get better products!

### Building Quality

You're investing in high-quality products built to last for years of reliable service. Moreover, we partner with our customers to better understand how you're deploying our products in the field, then use your experiences to improve performance and durability.



### A+ service, every time

You'll see A+ Service in action when you contact any of our support services options no matter where you are in the world. We'll listen to your situation and work methodically to resolve it as quickly as we can. We are guided by a mindset of integrity and a customer service view centered on collaboration and relationships, not transactions.

**For more information visit [graco.com/pumphouse](https://graco.com/pumphouse)**