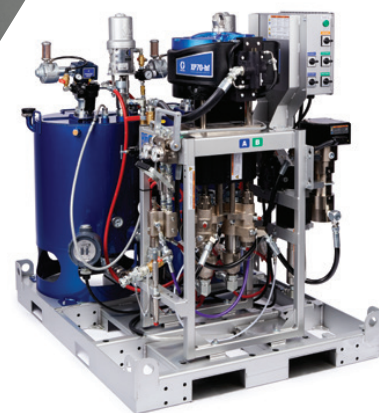




PLURAL COMPONENT SPRAYERS

For Protective Coatings Applications



PROVEN QUALITY. LEADING TECHNOLOGY.



MADE IN THE USA WITH
GLOBAL COMPONENTS

THE INDUSTRY LEADER FOR OVER 60 YEARS

Whether it's a large coating project like a bridge, ship or tank, you depend on your spray equipment to deliver a flawless performance every time. Graco offers a complete lineup of the industry's most dependable plural-component sprayers — in the exact size you need to accomplish any airless spray project.

TRUST YOUR BUSINESS AND REPUTATION TO GRACO

Graco is committed to providing the highest quality protective coating airless sprayers available, backed by the industry's best warranty.

AMERICAN BUILT QUALITY SINCE 1926

100% factory-tested and field-proven Graco professional sprayers are manufactured, assembled and supported in the USA.

INDUSTRY-LEADING WARRANTY

Behind every Graco sprayer is the industry's strongest warranty. You may never use Graco's warranty — but if you do, we will be there.



GRACO EXCLUSIVE TECHNOLOGY THAT KEEPS YOU SPRAYING



PATENTED

THE LONGEST LASTING PUMPS EVER BUILT

- Xtreme pumps offer Longest life in the industry with available MaxLife® piston rod and cylinder
- Up to 6X longer life
- Long-life ceramic balls for maximum versatility no matter what you're spraying (Optional Kit)



PATENTED

LEGENDARY PERFORMANCE

- XL Air Motors provide a faster, more responsive changeover
- Thermally isolated external pilot lines minimize icing
- Little to no pulsation or pattern fluctuation, even with multiple guns



PATENTED

LESS DOWNTIME FOR MORE PRODUCTIVITY

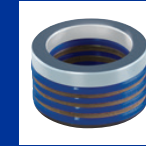
- Endurance™ Pump Lowers — quick and easy “on-the-job” pump removal and maintenance
- QuikAccess™ intake valve for easy access to lower ball check



GRACO EXCLUSIVE

DIGITAL MONITORING

- Quickly monitor pump cycles and gallons sprayed
- Automatic runaway protection
- Customizable maintenance reminders



PATENT PENDING

MATERIAL COMPATIBILITY

- Optional packing materials for the best pump performance — spray high solids, heated material, or solvent based coatings with confidence!
- UHMWPE and PTFE
- PTFE



GRACO EXCLUSIVE

PLUG IN PERFORMANCE

- Electric driven pumps up to 5000 psi
- Eliminates the need for an air compressor



THE RIGHT SPRAYER FOR EVERY JOB

NO MATTER THE JOB, GRACO HAS A PROPORTIONER FOR YOU — YOU CHOOSE!

With the widest selection of plural component sprayers to choose from and a host of performance enhancing accessories, there is a Graco plural component proportioner to help you complete your projects — no matter how large or which coating.

Discover the benefits of Graco's line of sprayers when you switch from hand-mixing to a plural component machine.



Reduce waste and material costs

With Graco sprayers, you reduce waste and save money because you only mix as much material as you need. No more throwing away unused material at the end of the day. No more residue left over in smaller pails or cans. You can buy material in bulk as well.



Less clean-up saves time and money

Only the parts that come in contact with mixed material must be cleaned during the job. Instead of flushing out an entire pump system that contains mixed material, you only need to flush the static mix tube and hose to the gun. Reduced cleaning time means you save labor costs and increase uptime.



Provides consistent material quality

No more guesswork or human error in measuring means you can improve throughput, cut back on material waste and reduce rework. Materials are proportioned by precision positive displacement pumps and mixed accurately and on-ratio at the mix manifold.



| MODEL | E-MIX XT | XP | XP-HF | XPS-HF | XM |
|-----------------|-----------|----------------------------------|----------------------------------|----------------------------------|---------------|
| RATIO TYPE | Variable | Fixed | Fixed | Fixed | Variable |
| MIX RATIO | 1:1 – 6:1 | Available in ratios of 1:1 – 4:1 | Available in ratios of 1:1 – 4:1 | Available in ratios of 1:1 – 4:1 | 1:1 – 10:1 |
| AIR REQUIRED | No | Yes | Yes | Yes | Yes |
| SUPPLY POWER | 230V | 230V | 230V | 230V and 480V | 230V and 480V |
| PORTABILITY | ★★★★★ | ★★★ | ★★★ | ★★ | ★★ |
| OUTPUT | ★★★ | ★★★★ | ★★★★★ | ★★★★★ | ★★★★★ |
| RANGE OF MODELS | ★★ | ★★★★ | ★★★★ | ★★★★★ | ★★★ |



INCREASE PROFIT & QUALITY WITH E-MIX XT!

Introducing the industry's most economical, easy-to-operate and portable electric variable ratio spray system! Designed to handle spray ratios from 1:1 up to 6:1, it is also fully capable with coatings up to 100% solids content — making it an ideal solution for nearly every job!

ELECTRIC POWERED, NO AIR COMPRESSOR NEEDED
less hassle and expense — save \$1000's per week!

EASY TOUCHSCREEN OPERATION
set ratio, pressure, heater temperatures and spray!

QUIET OPERATION allows extended spray times in noise-sensitive areas

OFFERS SUBSTANTIAL SOLVENT AND COATING SAVINGS
compared to "hot-potting"



WHAT CONTRACTORS ARE SAYING...

"On our very first job, we saw at least a **15% savings** on materials (coatings and solvent) compared to hot potting...In fact, we plan on phasing out our Kings and moving the rest of the crews to E-Mix XT"

- Manuel Rodriguez, Co-owner, Polytech Industrial Inc, Fresno, CA



THE EASIEST-TO-OPERATE VARIABLE-RATIO SPRAYER IN THE INDUSTRY SO EASY, YOU CAN RUN IT FROM A SINGLE TOUCHSCREEN!

SAVE TIME AND MONEY WITH GRACO'S XT MOTOR TECHNOLOGY

Bypass the usage of expensive and inefficient diesel compressors and realize immediate cost savings with Graco's XT Electric Motors. Whether it's compressor rental, acquisition or maintenance costs, choose a cleaner, less expensive method to keep your business moving — XT Electric.

| DIESEL COMPRESSOR SIZE | GALLONS OF DIESEL FUEL PER 8 HOUR SHIFT | Xtreme TORQUE | |
|------------------------|---|--|--|
| | | DIESEL FUEL SAVINGS USING SHORE POWER* | DIESEL FUEL SAVINGS USING A GENERATOR* |
| 375 CFM | 48 | \$216 | \$184 |
| 750 CFM | 104 | \$468 | \$398 |
| 1170 CFM | 168 | \$756 | \$643 |

*Based on typical air compressors in market. Actual may vary by brand and model. Diesel Fuel based on \$4.50 a gallon at pump. Delivered fuel would deliver additional savings.



SOLUTIONS FOR EVERY JOB!

ELECTRIC POWERED!
ELIMINATE THE COMPRESSOR AND SAVE MONEY

E-MIX XT

ADJUSTABLE RATIOS FROM 1:1 TO 6:1 PLURAL COMPONENT SPRAYING MADE EASIER — WITH ONE MACHINE

Introducing the industry's most economical, easy-to-operate and portable electric variable ratio spray system! Designed to handle spray ratios from 1:1 up to 6:1, it is also fully capable with coatings up to 100% solids content — making it an ideal solution for nearly every job!

XT BREAKTHROUGH PERFORMANCE

- Variable ratio from 1:1 to 6:1
- Flow rates up to 1.5 gpm
- 5000 psi max pressure

XTREME TORQUE™ MOTORS

- Low RPM, high torque design offers long life and unmatched performance
- Silent operation for comfort and extending spray times in restricted areas
- Made in the USA by Graco

DUAL ENDURANCE® PUMP WITH PROCONNECT®

- Job site proven Chromex Rod and Chrome Cylinder for exceptional life and durability
- Balanced double-displacement design for ratio accuracy
- Quick and easy pump removal with just a hammer — perfect for on-the-job maintenance

DUALFLO® ON-DEMAND FLUID HEATER

- Offers independent heat for A and B components
- 4000 watt power provides up to 60°F delta T heat rise for easier spraying
- Adjusts right from the touch screen

EASY-TO-MANEUVER DESIGN

- Heavy-duty painted steel construction with integrated lift points and flat proof tires

FEATURING RATIOGUARD PROTECTION

- Real-time ratio monitoring maintains accuracy
- Integrated alarm system prevents errors and eliminates rework

INTEGRATED RATIO CHECK

- Proved on-ratio accuracy for each mix — ensuring quality
- Ideal for inspections and quality control checks
- Single-handle design for easy, efficient operations

FASTCLEAN™ SOLVENT PUMP

- Allows quick flushing of mix hose and gun during stoppage to protect your equipment
- Features 5 gallon inlet suction set for solvent bucket
- Powered by Xtreme Torque Motor and Endurance pump for long life and trouble-free operation

SMARTSYNC™ CONTROL WITH TOUCH-SCREEN INTERFACE

- All important spray parameters are controlled from one screen — nothing could be easier
- Eliminates the steep learning curve — no expert needed
- Perfectly syncs the XT motors and pumps to deliver the perfect ratio — every time



STAND ALONE HEATED HOSE

- Easily adjust hose temp at the push of a button
- Available in 50 ft or 100 ft lengths in 1/2 in x 1/2 in or 1/2 in x 3/8 in
- Can heat material up to an additional 40 degrees F!
- Fits all models of E-Mix XT

AVAILABLE ACCESSORY



SCAN FOR MORE INFORMATION
GRACO.COM/EMIX



ENDURANCE LOWERS FOR QUICK AND EASY “ON-THE-JOB” PUMP REMOVAL AND MAINTENANCE — NOTHING IS FASTER!



PROVEN DESIGN AND PERFORMANCE

- Chromex™ Rod and Stainless Steel cylinder for maximum life and performance
- UHMWPE and PTFE packings for ultimate durability with most materials
- QuikAccess™ intake valve for easy access to lower ball check

REMOVE THE PUMP IN 3 EASY STEPS



1. Loosen jam nut



2. Spin pump to remove



3. Spin pump to remove



XTREME TORQUE™

XTREME TORQUE MOTOR

PATENT PENDING

- Experience a new level of performance with the first motor ever designed specifically for airless spray
- Sound of quality. The first motor ever designed specifically for airless spray
- Rapid-Response™ Control delivers the world's steadiest running pressure with dial-in 10 psi increments.



E-MIX XT PLURAL COMPONENT SPRAYER

READY-TO-SPRAY SOLUTIONS FOR EVERY JOB!

Choose from Standard Series for work where a remote manifold is not required, or choose the Pro Series for longer hose runs with a remote manifold — you decide!



E-MIX XT STANDARD INCLUDES:

- E-Mix XT (240v 40a Single Phase)
- Dual 7 Gallon Hoppers
- FastClean Solvent Flush Pump
- DualFlo Heater
- Ratio Check Kit
- 25 ft x 3/8 in Mix Integration Hose
- 10 ft x 1/4 in Whip Hose
- XTR 5+ Gun, XHD 519 Switch Tip



E-MIX XT PRO INCLUDES:

All the **STANDARD** Features

PLUS:

- Light Tower
- Hose Rack
- Remote Manifold Carriage
- 200 ft x 1/2 in (4 x 50 ft) "A" and "B" Material Hose
- 100 ft x 3/8 in (2 x 50 ft) "B" Material Hose (ratios over 3:1)

E-MIX XT PACKAGES

| DESCRIPTION | PART # | INCLUDES |
|-------------------|---------|--|
| E-Mix XT Standard | 2004087 | DualFlo Heaters, Fast Clean Flush Pump, Ratio Check, SmartSync Display |
| E-Mix XT Pro | 2005565 | All Standard Package features, PLUS Light Tower, Hose Rack, 100 ft of Remote Mix hoses, Remote Mix Manifold Carriage |

All packages include XTR+ Gun, 35 ft integration hose and static mixers.

BUILD IT THE WAY YOU NEED IT, WITH THESE GREAT ACCESSORIES!

| ACCESSORIES | PART # | |
|--|---|---------|
| 1 Light Tower (included on E-Mix XT Pro) | 18H278 | |
| 2 Hose Rack (included on E-Mix XT Pro) | 2006329 | |
| 3 | 1/2 in x 1/2 in x 50 ft Complete Heated Hose Kit | 2007169 |
| | 1/2 in x 1/2 in x 100 ft Complete Heated Hose Kit | 2007171 |
| | 1/2 in x 3/8 in x 50 ft Complete Heated Hose Kit | 2007173 |
| | 1/2 in x 3/8 in x 100 ft Complete Heated Hose Kit | 2007175 |
| 4 Heated Hose Controller | 2006697 | |



SEE IN ACTION



graco.com/EMIX

XP

THE FIXED-RATIO, TWO COMPONENT PROPORTIONING SOLUTION!

Whether you are spraying a high-solids polyurethane or a 100% solids epoxy, Graco has you covered with the XP Family of sprayers. Offering the benefit of mixing only the amount of material the job requires, it saves on material costs — as well as the cost and time of cleanup. Get the job done faster, and with less cost so you can make more profit.

EXCLUSIVE XTREME PUMP LOWERS

- Proven performance you can count on
- Multiple sizes available to provide various fixed mix ratios
- Easily change one or both lowers to get desired mix ratio
- Heavy-duty piston rods for long life

XL6500 10 INCH AIR MOTOR

- The proven air motor that is designed to keep you spraying and eliminate icing
- Heavy-duty aluminum, steel and composite construction for years of service
- De-ice valve keeps system ice-free during heavy icing conditions

OUTLET MANIFOLD AND VALVES

- Included fluid gauges allow for monitoring pump output
- Provides automatic overpressure relief
- Allows circulation back to the supply for pump priming, purging or relieving outlet pressure
- Allows fluid warm-up circulation with integrated heaters

MIX MANIFOLD

- Provides simple fluid control for mixing or flushing
- Easily handles high-solids coatings with oversized porting and less pressure drop
- Position on unit, or remotely for ultimate convenience

RATIO ASSURANCE

- Available accessory for both Hazardous and Non-Hazardous location models
- Monitors A and B differential pressure to assure your on ratio — every time

VISCON® HP PRIMARY HEATERS

- Reduces coating viscosity and improves spray pattern
- Easy to adjust temperature controls with built in thermostat and temperature gauge



RATIO CHECK KIT ACCESSORY

- Easily take material samples to verify on ratio performance
- Designed to easily mounted to all styles of XP proportioners, regardless of size or configuration



Part number: 2000308

OPTIONAL ACCESSORY

NON-HAZARDOUS LOCATION

| DESCRIPTION | PART # | INCLUDES |
|-------------------------------|--------|---|
| XP50 1:1 Heated | 575105 | Junction Box, Viscon HP Heaters |
| XP50 1:1 Electric Heated Hose | 575107 | Junction Box, Viscon HP Heaters, Hose Heat Circulation Kit, Remote Carriage, PressureTrak |
| XP50 2:1 Heated | 575205 | Junction Box, Viscon HP Heaters |
| XP50 2:1 Electric Heated Hose | 575207 | Junction Box, Viscon HP Heaters, Hose Heat Circulation Kit, Remote Carriage, PressureTrak |
| XP50 3:1 Heated | 575305 | Junction Box, Viscon HP Heaters |
| XP50 3:1 Electric Heated Hose | 575307 | Junction Box, Viscon HP Heaters, Hose Heat Circulation Kit, Remote Carriage, PressureTrak |
| XP50 4:1 Heated | 575405 | Junction Box, Viscon HP Heaters |
| XP50 4:1 Electric Heated Hose | 575407 | Junction Box, Viscon HP Heaters, Hose Heat Circulation Kit, Remote Carriage, PressureTrak |
| XP70 1:1 Heated | 576105 | Junction Box, Viscon HP Heaters |
| XP70 1:1 Electric Heated Hose | 576107 | Junction Box, Viscon HP Heaters, Hose Heat Circulation Kit, Remote Carriage, PressureTrak |
| XP70 2:1 Heated | 576205 | Junction Box, Viscon HP Heaters, |
| XP70 2:1 Electric Heated Hose | 576207 | Junction Box, Viscon HP Heaters, Hose Heat Circulation Kit, Remote Carriage, PressureTrak |
| XP70 3:1 Heated | 576305 | Junction Box, Viscon HP Heaters |
| XP70 3:1 Electric Heated Hose | 576307 | Junction Box, Viscon HP Heaters, Hose Heat Circulation Kit, Remote Carriage, PressureTrak |
| XP70 4:1 Heated | 576405 | Junction Box, Viscon HP Heaters |
| XP70 4:1 Electric Heated Hose | 576407 | Junction Box, Viscon HP Heaters, Hose Heat Circulation Kit, Remote Carriage, PressureTrak |

All packages include 7 Gallon Hoppers, Merkur Solvent Flush Pump, XTR+ Gun, 35 ft integration hose and static mixers. Power junction box designed for 240V single or three phase supply power. Heated hoses must be ordered separately in desired sizes and lengths.

HAZARDOUS LOCATION PACKAGES

| DESCRIPTION | PART # | INCLUDES |
|------------------------------|--------|--|
| XP50 1:1 Non Heated | 282102 | |
| XP50 1:1 Heated | 282104 | Merkur Flush Pump, Viscon HP Heaters |
| XP50 1:1 Water Jacketed Hose | 282106 | Merkur Flush Pump, Viscon HP Heaters, Hose Heat Circulation Kit, Remote Carriage, PressureTrak |
| XP50 2:1 Non Heated | 282202 | |
| XP50 2:1 Heated | 282204 | Merkur Flush Pump, Viscon HP Heaters |
| XP50 2:1 Water Jacketed Hose | 282206 | Merkur Flush Pump, Viscon HP Heaters, Hose Heat Circulation Kit, Remote Carriage, PressureTrak |
| XP50 3:1 Non Heated | 282302 | |
| XP50 3:1 Heated | 282304 | Merkur Flush Pump, Viscon HP Heaters |
| XP50 3:1 Water Jacketed Hose | 282306 | Merkur Flush Pump, Viscon HP Heaters, Hose Heat Circulation Kit, Remote Carriage, PressureTrak |
| XP50 4:1 Non Heated | 282402 | |
| XP50 4:1 Heated | 282404 | Merkur Flush Pump, Viscon HP Heaters |
| XP50 4:1 Water Jacketed Hose | 282406 | Merkur Flush Pump, Viscon HP Heaters, Hose Heat Circulation Kit, Remote Carriage, PressureTrak |
| XP70 1:1 Non Heated | 571102 | |
| XP70 1:1 Heated | 571104 | Merkur Flush Pump, Viscon HP Heaters |
| XP70 1:1 Water Jacketed Hose | 571106 | Merkur Flush Pump, Viscon HP Heaters, Hose Heat Circulation Kit, Remote Carriage, PressureTrak |
| XP70 2:1 Non Heated | 571202 | |
| XP70 2:1 Heated | 571204 | Merkur Flush Pump, Viscon HP Heaters |
| XP70 2:1 Water Jacketed Hose | 571206 | Merkur Flush Pump, Viscon HP Heaters, Hose Heat Circulation Kit, Remote Carriage, PressureTrak |
| XP70 3:1 Non Heated | 571302 | |
| XP70 3:1 Heated | 571304 | Merkur Flush Pump, Viscon HP Heaters |
| XP70 3:1 Water Jacketed Hose | 571306 | Merkur Flush Pump, Viscon HP Heaters, Hose Heat Circulation Kit, Remote Carriage, PressureTrak |
| XP70 4:1 Non Heated | 571402 | |
| XP70 4:1 Heated | 571404 | Merkur Flush Pump, Viscon HP Heaters |
| XP70 4:1 Water Jacketed Hose | 571406 | Merkur Flush Pump, Viscon HP Heaters, Hose Heat Circulation Kit, Remote Carriage, PressureTrak |

All packages include 7 Gallon Hoppers, XTR+ Gun, 35 ft integration hose and static mixers. Designed for 240V supply power. Heated hoses must be ordered separately in desired sizes and lengths.

XP-HF

HIGH OUTPUT FIXED RATIO PROPORTIONING FOR THE LARGEST JOBS

With the powerful XL 10000 air motor, the XP-HF delivers 60% more flow than the standard XP sprayer. This give your crew the ability to use larger tips or run multiple guns, getting the job done faster. Available in 5000psi and 7250psi models with mix ratios of 1:1, 2:1, 3:1 or 4:1*

*Additional ratios available possible by changing displacement pump sizes. Please see your distributor for all possible ratios.

EXCLUSIVE XTREME PUMP LOWERS

- Proven performance you can count on
- Multiple sizes available to provide various fixed mix ratios
- Easily change one or both lowers to get desired mix ratio
- Heavy-duty piston rods for long life

XL10000 13 INCH AIR MOTOR

- The proven air motor that is designed to keep you spraying and eliminate icing
- Heavy-duty aluminum, steel and composite construction for years of service
- De-ice valve keeps system ice-free during heavy icing conditions

VISCON® HF PRIMARY HEATERS

- Reduces coating viscosity and improves spray pattern
- Fully accessible heater core with serviceable heating elements.

MIX MANIFOLD

- Provides simple fluid control for mixing or flushing
- Easily handles high-solids coatings with oversized porting and less pressure drop
- Position on unit, or remotely for ultimate convenience

RATIO ASSURANCE

- Available accessory for both Hazardous and Non-Hazardous location models
- Monitors A and B differential pressure to assure your on ratio — every time

OUTLET MANIFOLD AND VALVES

- Included fluid gauges allow for monitoring pump output
- Provides automatic overpressure relief
- Allows circulation back to the supply forepump priming, purging or relieving outlet pressure
- Allows fluid warm-up circulation with integrated heaters



REMOTE GUN SPLITTER

- Supports up to 2 Guns with independent flush valves, with an additional 3rd gun port
- Allows for one sprayer to continue working while flushing out the other gun and hose.



Part number: 262826

AVAILABLE ACCESSORY

NON-HAZARDOUS LOCATION

| DESCRIPTION | PART # | INCLUDES |
|----------------------------------|--------|---|
| XP50-hf 1:1 Heated | 573105 | 240V Viscon HF Heaters, Heated Hose Circulation Kit |
| XP50-hf 1:1 Electric Heated Hose | 573107 | Junction Box, Viscon HF Heaters, Hose Heat Circulation Kit, Remote Carriage, PressureTrak |
| XP50-hf 2:1 Heated | 573205 | Junction Box, Viscon HF Heaters |
| XP50-hf 2:1 Electric Heated Hose | 573207 | Junction Box, Viscon HF Heaters, Hose Heat Circulation Kit, Remote Carriage, PressureTrak |
| XP50-hf 3:1 Heated | 573305 | Junction Box, Viscon HF Heaters |
| XP50-hf 3:1 Electric Heated Hose | 573307 | Junction Box, Viscon HF Heaters, Hose Heat Circulation Kit, Remote Carriage, PressureTrak |
| XP50-hf 4:1 Heated | 573405 | Junction Box, Viscon HF Heaters |
| XP50-hf 4:1 Electric Heated Hose | 573407 | Junction Box, Viscon HF Heaters, Hose Heat Circulation Kit, Remote Carriage, PressureTrak |
| XP70-hf 1:1 Heated | 572105 | Junction Box, Viscon HF Heaters |
| XP70-hf 1:1 Electric Heated Hose | 572107 | Junction Box, Viscon HF Heaters, Hose Heat Circulation Kit, Remote Carriage, PressureTrak |
| XP70-hf 2:1 Heated | 572205 | Junction Box, Viscon HF Heaters, |
| XP70-hf 2:1 Electric Heated Hose | 572207 | Junction Box, Viscon HF Heaters, Hose Heat Circulation Kit, Remote Carriage, PressureTrak |
| XP70-hf 3:1 Heated | 572305 | Junction Box, Viscon HF Heaters |
| XP70-hf 3:1 Electric Heated Hose | 572307 | Junction Box, Viscon HF Heaters, Hose Heat Circulation Kit, Remote Carriage, PressureTrak |
| XP70-hf 4:1 Heated | 572405 | Junction Box, Viscon HF Heaters |
| XP70-hf 4:1 Electric Heated Hose | 572407 | Junction Box, Viscon HF Heaters, Hose Heat Circulation Kit, Remote Carriage, PressureTrak |

All packages include 7 Gallon Hoppers, Merkur Solvent Flush Pump, XTR+ Gun, 35 ft integration hose and static mixers. Power junction box designed for 240V single or three phase supply power. Heated hoses must be ordered separately in desired sizes and lengths.

HAZARDOUS LOCATION PACKAGES

| DESCRIPTION | PART # | INCLUDES |
|---------------------------------|--------|--|
| XP50-hf 1:1 Non Heated | 573102 | |
| XP50-hf 1:1 Heated | 573104 | Merkur Flush Pump, Viscon HF Heaters |
| XP50-hf 2:1 Water Jacketed Hose | 573106 | Merkur Flush Pump, Viscon HF Heaters, Hose Heat Circulation Kit, Remote Carriage, PressureTrak |
| XP50-hf 2:1 Non Heated | 573202 | |
| XP50-hf 3:1 Heated | 573204 | Merkur Flush Pump, Viscon HF Heaters |
| XP50-hf 3:1 Water Jacketed Hose | 573206 | Merkur Flush Pump, Viscon HF Heaters, Hose Heat Circulation Kit, Remote Carriage, PressureTrak |
| XP50-hf 4:1 Non Heated | 573302 | |
| XP50-hf 4:1 Heated | 573304 | Merkur Flush Pump, Viscon HF Heaters |
| XP70-hf 1:1 Water Jacketed Hose | 573306 | Merkur Flush Pump, Viscon HF Heaters, Hose Heat Circulation Kit, Remote Carriage, PressureTrak |
| XP70-hf 1:1 Non Heated | 573402 | |
| XP70-hf 2:1 Heated | 573404 | Merkur Flush Pump, Viscon HF Heaters |
| XP70-hf 2:1 Water Jacketed Hose | 573406 | Merkur Flush Pump, Viscon HF Heaters, Hose Heat Circulation Kit, Remote Carriage, PressureTrak |
| XP70-hf 3:1 Non Heated | 572102 | |
| XP70-hf 3:1 Heated | 572104 | Merkur Flush Pump, Viscon HF Heaters |
| XP70-hf 4:1 Water Jacketed Hose | 572106 | Merkur Flush Pump, Viscon HF Heaters, Hose Heat Circulation Kit, Remote Carriage, PressureTrak |
| XP70-hf 4:1 Non Heated | 572202 | |
| XP70-hf 4:1 Heated | 572204 | Merkur Flush Pump, Viscon HF Heaters |
| XP70-hf 4:1 Water Jacketed Hose | 572206 | Merkur Flush Pump, Viscon HF Heaters, Hose Heat Circulation Kit, Remote Carriage, PressureTrak |
| XP70-hf 4:1 Non Heated | 572302 | |
| XP70-hf 4:1 Heated | 572304 | Merkur Flush Pump, Viscon HF Heaters |
| XP70-hf 4:1 Water Jacketed Hose | 572306 | Merkur Flush Pump, Viscon HF Heaters, Hose Heat Circulation Kit, Remote Carriage, PressureTrak |
| XP70-hf 4:1 Non Heated | 572402 | |
| XP70-hf 4:1 Heated | 572404 | Merkur Flush Pump, Viscon HF Heaters |
| XP70-hf 4:1 Water Jacketed Hose | 572406 | Merkur Flush Pump, Viscon HF Heaters, Hose Heat Circulation Kit, Remote Carriage, PressureTrak |

All packages include 7 Gallon Hoppers, XTR+ Gun, 35 ft integration hose and static mixers. Designed for 240V supply power. Heated hoses must be ordered separately in desired sizes and lengths.

XPS-HF

THE HIGHEST VOLUME OUTPUT FIXED-RATIO TURN KEY SOLUTION!

The Graco XPs-hf skid-based system is an all-in-one solutions that combines the XP-hf Sprayer with improved material conditioning. The XPs-hf helps reduce waste, speed up cure times and improve mix ratio. With the durable, agitated heated tanks, your coatings will obtain the best conditioning to meet the highest demand applications – making you more productive. Available in 5000psi and 7250psi models with mix ratios of 1:1, 2:1, 3:1 or 4:1*

*Additional ratios available possible by changing displacement pump sizes. Please see your distributor for all possible ratios.

EXCLUSIVE XTREME PUMP LOWERS

- Proven performance you can count on
- Multiple sizes available to provide various fixed mix ratios
- Easily change one or both lowers to get desired mix ratio
- Heavy-duty piston rods for long life

XL10000 13 INCH AIR MOTOR

- The proven air motor that is designed to keep you spraying and eliminate icing
- Heavy-duty aluminum, steel and composite construction for years of service
- De-ice valve keeps system ice-free during heavy icing conditions

VISCON HF PRIMARY HEATERS

- Reduces coating viscosity and improves spray pattern
- Fully accessible heater core with Serviceable heating elements.
- Easy to service

MIX MANIFOLD

- Provides simple fluid control for mixing or flushing
- Easily handles high-solids coatings with oversized porting and less pressure drop
- Position on unit, or remotely for ultimate convenience

RATIO ASSURANCE

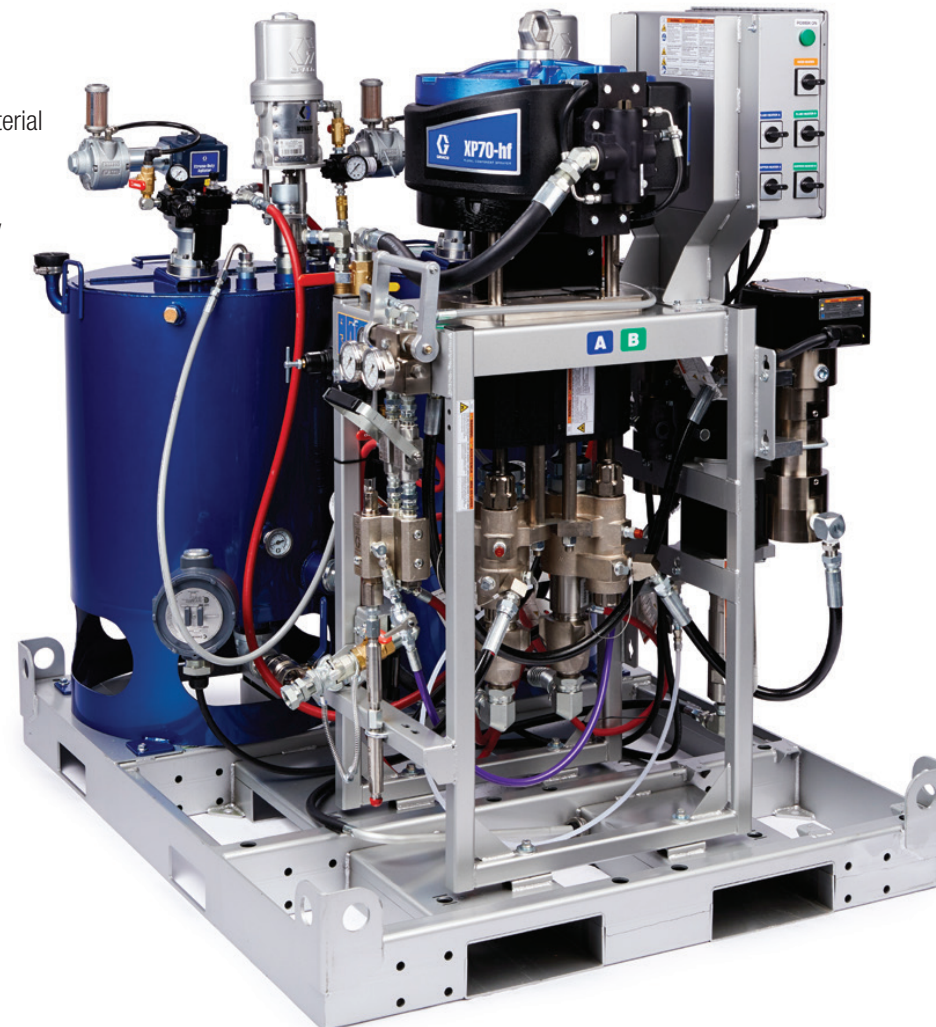
- Available accessory for both Hazardous and Non-Hazardous location models
- Monitors A and B differential pressure to assure your on ratio — every time

25 GAL SST-LINED HEATED HOPPERS

- Double-walled construction with 3000w heaters to condition material
- Xtreme-Duty agitators easily mixes high viscosity coatings
- 5:1 Monark® Feed pumps easily transport materials from hopper to pumps

OUTLET MANIFOLD AND VALVES

- Included fluid gauges allow for monitoring pump output
- Provides automatic overpressure relief
- Allows circulation back to the supply forepump priming, purging or relieving outlet pressure
- Allows fluid warm-up circulation with integrated heaters



XP PRESSURE MONITOR

- Monitors A and B differential pressure to assure you're on ratio — every time!
- Available in 120-240v or air turbine power
- Fits all models of XP sprayers



Part number 26C008 shown

AVAILABLE ACCESSORY

NON-HAZARDOUS LOCATION

| DESCRIPTION | PART # | INCLUDES |
|-----------------------------------|--------|---|
| XP50s-hf 1:1 Electric Heated Hose | 578103 | XTR5+ Gun, 35 ft Integration Hose, Electric Heated Hose Controller, Ratio Check Kit |
| XP50s-hf 1:1 Water Jacketed Hose | 578101 | XTR5+ Gun, 35 ft Integration Hose, Heated Hose Controller, Ratio Check Kit |
| XP50s-hf 2:1 Electric Heated Hose | 578203 | XTR5+ Gun, 35 ft Integration Hose, Electric Heated Hose Controller, Ratio Check Kit |
| XP50s-hf 2:1 Water Jacketed Hose | 578201 | XTR5+ Gun, 35 ft Integration Hose, Heated Hose Controller, Ratio Check Kit |
| XP50s-hf 3:1 Electric Heated Hose | 578303 | XTR5+ Gun, 35 ft Integration Hose, Electric Heated Hose Controller, Ratio Check Kit |
| XP50s-hf 3:1 Water Jacketed Hose | 578301 | XTR5+ Gun, 35 ft Integration Hose, Heated Hose Controller, Ratio Check Kit |
| XP50s-hf 4:1 Electric Heated Hose | 578403 | XTR5+ Gun, 35 ft Integration Hose, Electric Heated Hose Controller, Ratio Check Kit |
| XP50s-hf 4:1 Water Jacketed Hose | 578401 | XTR5+ Gun, 35 ft Integration Hose, Heated Hose Controller, Ratio Check Kit |
| XP70s-hf 1:1 Electric Heated Hose | 577103 | XTR5+ Gun, 35 ft Integration Hose, Electric Heated Hose Controller, Ratio Check Kit |
| XP70s-hf 1:1 Water Jacketed Hose | 577101 | XTR5+ Gun, 35 ft Integration Hose, Heated Hose Controller, Ratio Check Kit |
| XP70s-hf 2:1 Electric Heated Hose | 577203 | XTR5+ Gun, 35 ft Integration Hose, Electric Heated Hose Controller, Ratio Check Kit |
| XP70s-hf 2:1 Water Jacketed Hose | 577201 | XTR5+ Gun, 35 ft Integration Hose, Heated Hose Controller, Ratio Check Kit |
| XP70s-hf 3:1 Electric Heated Hose | 577303 | XTR5+ Gun, 35 ft Integration Hose, Electric Heated Hose Controller, Ratio Check Kit |
| XP70s-hf 3:1 Water Jacketed Hose | 577301 | XTR5+ Gun, 35 ft Integration Hose, Heated Hose Controller, Ratio Check Kit |
| XP70s-hf 4:1 Electric Heated Hose | 577403 | XTR5+ Gun, 35 ft Integration Hose, Electric Heated Hose Controller, Ratio Check Kit |
| XP70s-hf 4:1 Water Jacketed Hose | 577401 | XTR5+ Gun, 35 ft Integration Hose, Heated Hose Controller, Ratio Check Kit |

All packages include Merkur Solvent Flush Pump, Remote Manifold Carriage, XTR+ Gun, 35 ft integration hose and static mixers. 480V packages available. See page 29 for additional models.

HAZARDOUS LOCATION COMPONENTS

| DESCRIPTION | PART # | INCLUDES |
|-----------------------------------|--------|--|
| XP50s-hf 1:1 Electric Heated Hose | 578113 | XTR 5+ Gun, 35 ft Integration Hose, Electric Heated Hose Controller, Ratio Check Kit |
| XP50s-hf 1:1 Water Jacketed Hose | 578111 | XTR 5+ Gun, 35 ft Integration Hose, Heated Hose Circulation Kit, Ratio Check Kit |
| XP50s-hf 2:1 Electric Heated Hose | 578213 | XTR 5+ Gun, 35 ft Integration Hose, Electric Heated Hose Controller, Ratio Check Kit |
| XP50s-hf 2:1 Water Jacketed Hose | 578211 | XTR 5+ Gun, 35 ft Integration Hose, Heated Hose Circulation Kit, Ratio Check Kit |
| XP50s-hf 3:1 Electric Heated Hose | 578313 | XTR 5+ Gun, 35 ft Integration Hose, Electric Heated Hose Controller, Ratio Check Kit |
| XP50s-hf 3:1 Water Jacketed Hose | 578311 | XTR 5+ Gun, 35 ft Integration Hose, Heated Hose Circulation Kit, Ratio Check Kit |
| XP50s-hf 4:1 Electric Heated Hose | 578413 | XTR 5+ Gun, 35 ft Integration Hose, Electric Heated Hose Controller, Ratio Check Kit |
| XP50s-hf 4:1 Water Jacketed Hose | 578411 | XTR 5+ Gun, 35 ft Integration Hose, Heated Hose Circulation Kit, Ratio Check Kit |
| XP70s-hf 1:1 Electric Heated Hose | 577113 | XTR 7+ Gun, 35 ft Integration Hose, Electric Heated Hose Controller, Ratio Check Kit |
| XP70s-hf 1:1 Water Jacketed Hose | 577111 | XTR 7+ Gun, 35 ft Integration Hose, Heated Hose Circulation Kit, Ratio Check Kit |
| XP70s-hf 2:1 Electric Heated Hose | 577213 | XTR 7+ Gun, 35 ft Integration Hose, Electric Heated Hose Controller, Ratio Check Kit |
| XP70s-hf 2:1 Water Jacketed Hose | 577211 | XTR 7+ Gun, 35 ft Integration Hose, Heated Hose Circulation Kit, Ratio Check Kit |
| XP70s-hf 3:1 Electric Heated Hose | 577313 | XTR 7+ Gun, 35 ft Integration Hose, Electric Heated Hose Controller, Ratio Check Kit |
| XP70s-hf 3:1 Water Jacketed Hose | 577311 | XTR 7+ Gun, 35 ft Integration Hose, Heated Hose Circulation Kit, Ratio Check Kit |
| XP70-hf 4:1 Electric Heated Hose | 577413 | XTR 7+ Gun, 35 ft Integration Hose, Electric Heated Hose Controller, Ratio Check Kit |
| XP70s-hf 4:1 Water Jacketed Hose | 577411 | XTR 7+ Gun, 35 ft Integration Hose, Heated Hose Circulation Kit, Ratio Check Kit |

Systems are designed with individual components designed for explosive atmospheres. All packages include Merkur Solvent Flush Pump, Remote Manifold Carriage, XTR+ Gun, 35 ft integration hose and static mixers. 480V packages available. See page 29 for additional models.

XM

ADJUSTABLE RATIOS FROM 1:1 TO 10:1 — WITH ONE MACHINE

No matter the material or the ratio it requires, XM has you covered! Save time and money by mixing only the material you need, while also eliminating hand-mixing errors. Equipped with intuitive user controls, real-time display of ratio, and even downloadable data reporting you can be assured that the job was done right — every time.

EXCLUSIVE XTREME PUMP LOWERS

- Proven performance you can count on
- Multiple sizes available to provide various fixed mix ratios
- Easily change one or both lowers to get desired mix ratio
- Heavy-duty piston rods for long life

XL6500 10 INCH AIR MOTORS

- The proven air motor that is designed to keep you spraying and eliminate icing
- Heavy-duty aluminum, steel and composite construction for years of service
- De-ice valve keeps system ice-free during heavy icing conditions

PRECISION DOSING VALVES AND OUTLET MANIFOLD

- Precision dosing valves ensure the right ratio every time
- Provides automatic overpressure relief
- Allows circulation back to the supply for pump priming, purging or relieving outlet pressure
- Allows fluid warm-up circulation with integrated heaters

VISCON HF PRIMARY HEATERS

- Reduces coating viscosity and improves spray pattern
- Fully accessible heater core with serviceable heating elements.
- Easy to service

MIX MANIFOLD

- Provides simple fluid control for mixing or flushing
- Easily handles high-solids coatings with oversized porting and less pressure drop
- Position on unit, or remotely for ultimate convenience

OPTIONAL 25 GAL SST-LINED HEATED HOPPERS

- Double-walled construction with 3000w heaters to condition material
- Xtreme-Duty agitators easily mixes high viscosity coatings
- 5:1 Monark® Feed pumps easily transport materials from hopper to pumps

INTUITIVE USER CONTROLS

- Adjustable ratio control from 1:1 to 10:1
- LCD Display for real-time system information
- Ratio alarms automatically shut the system down in case of issues — saving time and money



XM SPARE PARTS KIT

- Convenient kit containing commonly needed repair parts for your XM system
- Reduce your downtime with kits to rebuild dosing valves and mix manifold

Part number: 17M883



AVAILABLE ACCESSORY

NON-HAZARDOUS LOCATION PACKAGES

| DESCRIPTION | PART # | INCLUDES |
|----------------------------|--------|--|
| XM50 Water Jacketed Hose | XM5M0W | Viscon HF Heaters, Heated Hose Circulation Kit |
| XP50s Water Jacketed Hose | XM5M2W | Viscon HF Heaters, Junction Box, Heated Hose Circulation Kit, 25 Gallon Double Wall Hoppers |
| XM50 Electric Heated Hose | XM5M0E | Viscon HF Heaters, Junction Box, Electric Heated Hose Controller |
| XM50s Electric Heated Hose | XM5M2E | Viscon HF Heaters, Junction Box, Electric Heated Hose Controller 25 Gallon Double Wall Hoppers |
| XM70 Water Jacketed Hose | XM7M0W | Viscon HF Heaters, Junction Box, Heated Hose Circulation Kit |
| XM70s Water Jacketed Hose | XM7M2W | Viscon HF Heaters, Junction Box, Heated Hose Circulation Kit, 25 Gallon Double Wall Hoppers |
| XM70 Electric Heated Hose | XM7M0E | Viscon HF Heaters, Junction Box, Electric Heated Hose Controller |
| XM70s Electric Heated Hose | XM7M2E | Viscon HF Heaters, Junction Box, Electric Heated Hose Controller 25 Gallon Double Wall Hoppers |

All packages include Merkur Solvent Flush Pump, Remote Manifold Carriage, XTR+ Gun, 35 ft integration hose and static mixers. 480V packages available. See page 30 for additional models.

HAZARDOUS LOCATION PACKAGES

| DESCRIPTION | PART # | INCLUDES |
|-----------------------------|--------|-------------------|
| XM50 Bare | XM5N00 | |
| XM50 with Viscon HP Heaters | XM5E00 | Viscon HP Heaters |
| XM70 Bare | XM7N00 | |
| XM70 with Viscon HP Heaters | XM7E00 | Viscon HP Heaters |

Systems carry top level approval for explosive atmospheres. All packages include Merkur Solvent Flush Pump, Remote Manifold Carriage, XTR+ Gun, 35 ft integration hose and static mixers.

HAZARDOUS LOCATION COMPONENTS PACKAGES

| DESCRIPTION | PART # | INCLUDES |
|----------------------------|--------|--|
| XM50 Water Jacketed Hose | XM5J0W | Viscon HF Heaters, Heated Hose Circulation Kit |
| XM50s Water Jacketed | XM5J2W | Viscon HF Heaters, Heated Hose Circulation Kit, 25 Gallon Double Wall Hoppers |
| XM50 Electric Heated Hose | XM5J0E | Viscon HF Heaters, Electric Heated Hose Controller |
| XM50s Electric Heated Hose | XM5J2E | Viscon HF Heaters, Electric Heated Hose Controller 25 Gallon Double Wall Hoppers |
| XM70 Water Jacketed Hose | XM7J0W | Viscon HF Heaters, Heated Hose Circulation Kit |
| XM70s Water Jacketed Hose | XM7J2W | Viscon HF Heaters, Heated Hose Circulation Kit, 25 Gallon Double Wall Hoppers |
| XM70 Electric Heated Hose | XM7J0E | Viscon HF Heaters, Electric Heated Hose Controller |
| XM70s Electric Heated Hose | XM7J2E | Viscon HF Heaters, Electric Heated Hose Controller 25 Gallon Double Wall Hoppers |

Systems are designed with individual components designed for explosive atmospheres. All packages include Merkur Solvent Flush Pump, Junction Box, Remote Manifold Carriage, XTR+ Gun, 35 ft integration hose and static mixers. 480V packages available. See page 30 for additional models.

NO MATTER THE JOB, GRACO HAS THE RIGHT GUN FOR YOU

Contractors throughout the world prefer Graco guns for their outstanding durability and reliable performance. Whether your material is flake filled material or a thin body coating, Graco has best solution for any job.

| MODEL | MAX WORKING PRESSURE | GUN FILTER | GUN SWIVEL | TRIGGER | FLUID PASSAGES |
|----------------|----------------------|------------|------------|----------------|---------------------------|
| XRT5+ | 5000 | Yes | Integrated | 4 Finger | Standard (through handle) |
| Silver Plus | 5000 | No | Accessory | 2 and 4 Finger | Large (direct to tip) |
| Silver Plus HP | 7250 | No | Accessory | 2 and 4 Finger | Large (direct to tip) |
| XRT7+ | 7250 | Yes | Integrated | 4 Finger | Standard (through handle) |
| XRT7+ Hi Flo | 7250 | Yes | Integrated | 4 Finger | Large (through handle) |
| XHF | 7250 | No | Accessory | 4 Finger | Oversized (direct to tip) |

XTR+

As the #1 choice of protective coating contractors, Graco's XTR-5+, XTR-7+, and XTR-7+ High Flow Guns are designed to be the longest lasting, most reliable airless spray guns on the market.

VERSATILE DESIGN

- Available with both 2-Finger and 4-Finger triggers
- XTR5+ and XTR7+ feature two handle options providing maximum control and comfort even when handling heated materials
- Detachable trigger guard swings clear of gun handle for easy filter access

EASY OUT™ GUN FILTER

- Filters from the inside out to prevent filter from collapsing
- Optimized high viscosity fluid packages for the thickest of materials

BUILT-IN SWIVEL

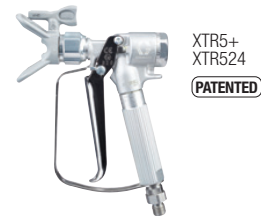
- Exclusive dual-seat Swivel design reduces sealing friction under pressure, making this the best swivel on the market
- Optional suction sets or feed pumps for all size material containers

GUN TRIGGER AND TRIGGER LOCK

- Smooth, lightweight trigger pull with simple, thumb-engaged safety lock
- Custom trigger options

XTR5+ AIRLESS SPRAY GUN, 5000 PSI (345 BAR, 34.5 MPA)

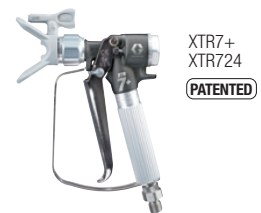
| PART # | DESCRIPTION |
|--------|--|
| XTR520 | 1 In Round Handle, 4-Finger Trigger, no Tip |
| XTR522 | Oval-insulated Handle, 4-Finger Trigger, 519 XHD RAC |
| XTR524 | 1 In Round Handle, 4-Finger Trigger, 519 XHD RAC |



XTR5+ XTR524
PATENTED

XTR7+ AIRLESS SPRAY GUN, 7250 PSI (500 BAR, 50 MPA)

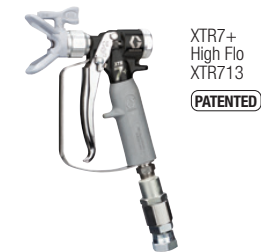
| PART # | DESCRIPTION |
|--------|--|
| XTR720 | Round Handle, 4-Finger Trigger, no Tip |
| XTR722 | Oval-insulated Handle, 4-Finger Trigger, 519 XHD RAC Tip |
| XTR724 | Round Handle, 4-Finger Trigger, 519 XHD RAC Tip |



XTR7+ XTR724
PATENTED

XTR7+™ HF HIGH FLOW AIRLESS SPRAY GUN, 7250 PSI (500 BAR)

| PART # | DESCRIPTION |
|--------|--|
| XTR712 | Oval-insulated Handle, 4-Finger Trigger, 519 XHD RAC Tip |



XTR7+ High Flo XTR713
PATENTED

XTR+ GUN ACCESSORIES, (FITS BOTH XTR5+ AND XTR7+)

| PART # | DESCRIPTION | PART # | DESCRIPTION |
|--------|--|--------|-------------------------------------|
| 273141 | Gun Repair Kit (includes Gasket, Needle, and Seat) | 287032 | Filter, 60 mesh |
| 287449 | 4-Finger Round Trigger Kit | 287033 | Filter, 100 mesh |
| 287450 | 2-Finger Trigger Kit | 287034 | Filter, 60 and 100 mesh combination |
| 287451 | 4-Finger Oval Insulation Trigger Kit | | |

SILVER PLUS AND SILVER PLUS HP™

As the preferred gun for many contractors, Graco's Silver Plus Gun is known for its durability, long life, spraying performance, and comfortable design.



Silver Plus HP Gun 273334 7250 psi
PATENTED

LASTS UP TO 2X LONGER BETWEEN REPACKS



Silver Plus Gun 246240 5000 psi
PATENTED

LIGHTWEIGHT, RUGGED DESIGN

- Durable forged aluminum withstands harsh work environments
- Lighter weight than competitive guns
- Polished body is easy to clean

ERGONOMIC DESIGN HANDLE

- Form-fitted handle for less fatigue
- Provides more control of gun while spraying

EXCLUSIVE NEEDLE DESIGN

- Factory-set needle needs no trigger adjustments
- Guaranteed for life against breakage
- Maximum performance and long life

STAINLESS STEEL FLUID TUBE

Fluid flows directly to the tip through the gun fluid tube, giving you the ability to spray heavier materials, such as high solid coatings and mastics, up to 7250 psi* (500 bar, 50.0 MPA)

*Silver Plus HP



SILVER PLUS AIRLESS SPRAY GUN 5000 PSI (345 BAR)

| PART # | DESCRIPTION |
|--------|---|
| 273329 | Silver Plus Gun (2-Finger) with XHD 519 Tip and Guard |
| 235460 | Silver Plus Gun (2-finger) with Flat Tip and Guard |
| 235461 | Silver Plus Gun (4-finger) with Flat Tip and Guard |
| 235474 | Repair Kit (Silver Plus) |



SILVER PLUS HP AIRLESS SPRAY GUN 7250 PSI (500 BAR)

| PART # | DESCRIPTION |
|--------|--|
| 273334 | Silver Plus HP Gun (2-finger) with XHD 419 Tip and Guard |
| 273335 | Silver Plus HP Gun (4-finger) with XHD 419 Tip and Guard |
| 20B225 | Repair Kit (Silver Plus HP) |



XHF HIGH-FLO

The XHF gun is the ideal choice for the heaviest coatings and fibrous materials. These guns feature oversized fluid passages and a filter-less design for maximum flow and superior atomization.



OVERSIZED FLUID PATH

- No-filter design offers minimal restriction and maximum flow
- Minimizes pack-out with heavy and filled materials
- Reduces pressure drop for superior atomization

JOB SITE PROVEN

- Perfect for the most demanding high viscosity, protective coatings, including epoxy intumescent coatings and fiber filled materials

PATENTED NEEDLE DESIGN

- Factory-set needle — no adjustment ever
- Heavy-duty design for maximum performance and long life

ERGONOMIC DESIGN

- Form-fitting handle provides maximum control and comfort while spraying
- Optimized trigger and lightweight design allows effortless, all-day spraying

XHF AIRLESS SPRAY GUN 7250 PSI (500 BAR)

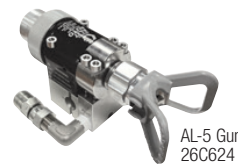
| PART # | DESCRIPTION |
|--------|---|
| 262854 | XHF Gun, includes XHD 429 Tip |
| 26C793 | XHF Gun, Top Feed, includes XHD 429 Tip |
| 273260 | Repair Kit (XHF Gun) |

AUTOMATIC AIRLESS GUNS

Control your spray applicator with a pneumatic air signal — perfect for use with a robotic arm or assembly line.

COMPACT DESIGN

- Easily mounted to any fixture or robotic arm
- Compact and lightweight to help increase production speed with low cost of ownership
- Optimized for use with protective coating materials up to 7250 psi (500 bar)



AUTOMATIC AIRLESS GUNS

| PART # | DESCRIPTION |
|--------|---|
| 26C624 | AL-5 gun, for high-pressure protective coatings materials, 5000 psi (350 bar) |
| 26C625 | AL-7 gun, for high-pressure protective coatings materials, 7250 psi (500 bar) |

AUTOMATIC AIRLESS MANIFOLD ACCESSORIES

| PART # | DESCRIPTION |
|--------|---|
| 241161 | NPT Fittings, 5000 psi (350 bar) |
| 241162 | JIC Fittings, 5000 psi (350 bar) |
| 26C622 | NPT Fittings, 7250 psi (500 bar) |
| 244930 | High Flow Ambient or Temperature Conditioned Manifold for streaming or spraying, 5000 psi (350 bar) |

GUN AND HOSE KITS

| PART # | DESCRIPTION |
|--------|--|
| 26C962 | XTR520, (2) XHD519 SwitchTips, hose and whip hose |
| 26C963 | XTR720, (2) XHD519 SwitchTips, hose and whip hose |
| 273142 | XTR520, (1) XHD317 and (1) XHD319 SwitchTips, hose and whip hose |
| 273143 | XTR720, (1) XHD317 and (1) XHD319 SwitchTips, hose and whip hose |
| 19D624 | Silver Plus, 50 ft hose bundle, whip hose, XHD417 SwitchTip |
| 19D625 | Silver Plus HP, 50 ft hose bundle, whip hose, XHD417 SwitchTip |
| 19D646 | Silver Plus, 150 ft hose bundle, whip hose, XHD417 SwitchTip |
| 19D647 | Silver Plus HP, 150 ft hose bundle, whip hose, XHD417 SwitchTip |

HIGH PRESSURE FITTINGS KIT

| PART # | DESCRIPTION |
|--------|----------------------------|
| 25A212 | High Pressure Fittings Kit |



GUNS SPLITTERS

| PART # | DESCRIPTION |
|--------|--|
| 17V587 | 4-gun spray line manifold with ball valves, no independent flush |
| 262826 | Gun Splitter, 2 guns, with independent flush |
| 288729 | Gun Splitter, 2 guns, 5000 psi |



GUNS SWIVELS

| PART # | DESCRIPTION |
|--------|-------------------------------------|
| 17G980 | 1/2 in x 3/8 in 7250 PSI Gun Swivel |
| 189018 | 1/4 in x 1/4 in 7250 PSI Gun Swivel |
| 207948 | 1/2 in x 1/2 in 6500 PSI Z-Swivel |
| 223340 | 1/4 in x 1/4 in 7250 PSI Z-Swivel |

HEAVY-DUTY EXTENSIONS

- Attach to any airless spray gun or in-line valve
- Tough, lightweight aluminum poles
- Ideal for high pressure spraying



| PART # | DESCRIPTION |
|--------|--|
| 246294 | 10 in (254 mm) Gun Extension, 7250 psi (500 bar, 50 MPa) |
| 246295 | 15 in (380 mm) Gun Extension, 7250 psi (500 bar, 50 MPa) |
| 246296 | 18 in (457 mm) Gun Extension, 7250 psi (500 bar, 50 MPa) |

HEAVY-DUTY 18" JETROLLER™

- Combines the speed of spray with the simplicity of rolling
- Fits 9-18 in standard roller covers
- Coverts to a 42 in spray wand - just remove the roller head!
- For use with 7/8 in (22 mm) thread guns or fittings



| PART # | DESCRIPTION | LENGTH |
|--------|---|---------------|
| 17U148 | Heavy-Duty Extension with Handle 7250 psi 500 bar | 42 in (107cm) |
| 25D229 | Heavy-Duty Extension with Handle and 18 in JetRoller 7250 psi 500 bar | 42 in (107cm) |

Fully adjustable handle for ultimate comfort

180° SPRAY NOZZLE

| PART # | DESCRIPTION |
|--------|--|
| 246297 | 180° Spray Nozzle, 7/8-14 UNC-2B, 7250 psi (500 bar, 50 MPa) |



RAC XHD TIPS AND GUARDS

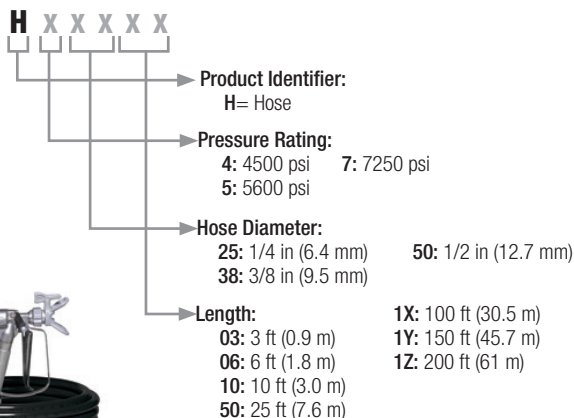
| PART # | DESCRIPTION |
|--------|--|
| XHDxxx | XHD SwitchTips, Gray (Odd #); Maximum Working Pressure: 7250 psi (500 bar, 50.0 MPa) |
| XHD001 | XHD RAC Guard; Maximum Working Pressure: 7250 psi (500 bar, 50.0 MPa) |
| XHD010 | Seal and Seal Kit (5-pack) |

RAC XHD SWITCHTIPS (XHDXXX)

| | | ORIFICE SIZE | | | | | | | | | | | | | | | | | | | | | | | | |
|-----------------|-----------------|--------------|-----|------|------|------|------|------|------|------|------|------|------|------|------|------|------|------|------|------|------|------|------|------|------|--|
| | | IN | MM | .007 | .009 | .011 | .013 | .015 | .017 | .019 | .021 | .023 | .025 | .027 | .029 | .031 | .033 | .035 | .037 | .039 | .041 | .043 | .045 | .047 | .049 | |
| FAN WIDTH | 2-4 (51-102) | | 107 | 109 | 111 | 113 | 115 | 117 | 119 | 121 | | | | | | | | | | | | | | | | |
| | 4-6 (102-152) | | 209 | 211 | 213 | 215 | 217 | 219 | 221 | | | | 225 | 227 | 229 | 231 | | 235 | | 239 | | | | | | |
| | 6-8 (152-203) | 307 | 309 | 311 | 313 | 315 | 317 | 319 | 321 | 323 | 325 | 327 | 329 | 331 | 333 | 335 | 337 | 339 | 341 | 343 | 345 | 347 | | | | |
| | 8-10 (203-254) | | 409 | 411 | 413 | 415 | 417 | 419 | 421 | 423 | 425 | 427 | 429 | 431 | 433 | 435 | 437 | 439 | 441 | 443 | 445 | 447 | 449 | | | |
| | 10-12 (254-305) | | 509 | 511 | 513 | 515 | 517 | 519 | 521 | 523 | 525 | 527 | 529 | 531 | 533 | 535 | 537 | 539 | 541 | 543 | 545 | 547 | 549 | | | |
| | 12-14 (305-356) | | 609 | 611 | 613 | 615 | 617 | 619 | 621 | 623 | 625 | 627 | 629 | 631 | 633 | 635 | 637 | 639 | 641 | 643 | 645 | 647 | 649 | | | |
| | 14-16 (356-406) | | | 711 | 713 | 715 | 717 | 719 | 721 | 723 | 725 | 727 | 729 | 731 | 733 | 735 | 737 | 739 | 741 | 743 | 745 | 747 | 749 | | | |
| | 16-18 (406-457) | | | | 813 | 815 | 817 | 819 | 821 | 823 | 825 | 827 | 829 | 831 | 833 | 835 | 837 | 839 | 841 | 843 | | 847 | | | | |
| | 18-20 (457-508) | | | | | | | | | | | 923 | | 927 | | 931 | 933 | 935 | 937 | 939 | | | | | | |
| | FLOW RATE (GPM) | | .05 | .09 | .12 | .18 | .24 | .31 | .38 | .47 | .57 | .67 | .77 | .90 | 1.03 | 1.17 | 1.31 | 1.47 | 1.63 | 1.8 | 1.98 | 2.17 | 2.37 | 2.58 | | |
| FLOW RATE (LPM) | | .20 | .33 | .49 | .69 | .91 | 1.17 | 1.47 | 1.79 | 2.15 | 2.54 | 2.96 | 3.42 | 3.90 | 4.42 | 4.98 | 5.56 | 6.18 | 6.83 | 7.51 | 8.23 | 8.98 | 9.76 | | | |

| | | ORIFICE SIZE | | | | | | | | | | | | | | |
|-----------------|-----------------|--------------|-------|-------|-------|-------|-------|-------|-------|-------|-------|-------|-------|-------|------|------|
| | | IN | MM | .051 | .053 | .055 | .057 | .059 | .061 | .063 | .065 | .067 | .069 | .071 | .075 | .081 |
| FAN WIDTH | 2-4 (51-102) | | | | | | | | | | | | | | | |
| | 4-6 (102-152) | | | | | | | | | | | | | | | |
| | 6-8 (152-203) | 351 | | 355 | | | | | | | | | | | | |
| | 8-10 (203-254) | 451 | | 455 | | 459 | 461 | 463 | 465 | 467 | | 471 | 475 | 481 | | |
| | 10-12 (254-305) | 551 | 553 | 555 | 557 | | 561 | | 565 | 567 | | 571 | 575 | | | |
| | 12-14 (305-356) | 651 | | 655 | 657 | 659 | 661 | 663 | 665 | 667 | 669 | 671 | 675 | | | |
| | 14-16 (356-406) | 751 | 753 | 755 | | | 761 | | | 767 | | 771 | | | | |
| | 16-18 (406-457) | 851 | | 855 | | | 861 | 863 | | 867 | | | | | | |
| | 18-20 (457-508) | | | | | | | | | | | | | | | |
| | FLOW RATE (GPM) | | 2.79 | 3.05 | 3.25 | 3.49 | 3.74 | 4.0 | 4.26 | 4.53 | 4.82 | 5.11 | 5.41 | 6.04 | 7.04 | |
| FLOW RATE (LPM) | | 10.57 | 11.41 | 12.29 | 13.20 | 14.14 | 15.12 | 16.13 | 17.17 | 18.24 | 19.34 | 20.48 | 22.85 | 26.66 | | |

XTREME-DUTY HIGH PRESSURE HOSE



Example:
H53850 is a 5600 psi,
3/8 in, 50 ft hose

CHOOSE THE RIGHT HOSE FOR THE JOB

| PART # | DESCRIPTION |
|--------------------------------|--|
| Working Pressure | 4500 psi (310 bar), 5600 psi (386 bar) or 7250 psi (500 bar) |
| Temperature Rating (all sizes) | -40° to 180°F (-40° to 82°C) |
| Chemical Resistance | Hose cover resistant to a wide variety of solvents, acids, and bases |
| Weather Resistance | Hose cover has outstanding resistance to oxygen, ozone, sunlight, and general weather conditions |
| Electrical Properties | Conductive hose |

3/4 IN XTREME-DUTY HIGH PRESSURE HOSE

| PART # | DESCRIPTION |
|--------|---|
| H77550 | 3/4 in x 50 ft (6.4 mm x 15 m) FBE Xtreme-Duty High Pressure Hose; Maximum Working Pressure: 7250 psi (500 bar) |

FOR USE WITH XP OR XM SYSTEMS

Cannot be linked together

ELECTRIC HEATED HOSE – *Approved for explosive atmospheres Class 1 Div 1*

7250 psi (500 bar, 50.0 MPa) *Continuous length*

50 ft (15 m)

| PART # | DESCRIPTION |
|---------|--|
| HH73215 | Electric Heated hose, 3/8 in (A), 1/4 in (B) with solvent line, no return line |
| HH73225 | Electric Heated hose, 3/8 in (A), 1/4 in (B) with solvent line, 2 x 3/8 in return line |
| HH73315 | Electric Heated hose, 3/8 in (A), 3/8 in (B) with solvent line, no return lines |
| HH73325 | Electric Heated hose, 3/8 in (A), 3/8 in (B) with solvent line, 2 x 3/8 in return line |
| HH75215 | Electric Heated hose, 1/2 in (A), 1/4 in (B) with solvent line, no return lines |
| HH75225 | Electric Heated hose, 1/2 in (A), 1/4 in (B) with solvent line, 2 x 3/8 in return lines |
| HH75315 | Electric Heated hose, 1/2 in (A), 3/8 in (B) with solvent line, no return lines |
| HH75325 | Electric Heated hose, 1/2 in (A), 3/8 in (B) with solvent line, 2 x 3/8 in return lines |
| HH75335 | Electric Heated hose, 1/2 in (A), 3/8 in and 1/4 in (B) with solvent line, no return lines |
| HH75345 | Electric Heated hose, 1/2 in (A), 3/8 in and 1/4 in (B) with solvent line, 2 x 3/8 in return lines |
| HH75515 | Electric Heated hose, 1/2 in (A), 1/2 in (B) with solvent line, no return lines |
| HH75525 | Electric Heated hose, 1/2 in (A), 1/2 in (B) with solvent line, 2 x 3/8 in return lines |

100 ft (30 m)

| PART # | DESCRIPTION |
|---------|--|
| HH7321X | Electric Heated hose, 3/8 in (A), 1/4 in (B) with solvent line, no return line |
| HH7322X | Electric Heated hose, 3/8 in (A), 1/4 in (B) with solvent line, 2 x 3/8 in return line |
| HH7331X | Electric Heated hose, 3/8 in (A), 3/8 in (B) with solvent line, no return lines |
| HH7332X | Electric Heated hose, 3/8 in (A), 3/8 in (B) with solvent line, 2 x 3/8 in return line |
| HH7521X | Electric Heated hose, 1/2 in (A), 1/4 in (B) with solvent line, no return lines |
| HH7522X | Electric Heated hose, 1/2 in (A), 1/4 in (B) with solvent line, 2 x 3/8 in return line |
| HH7531X | Electric Heated hose, 1/2 in (A), 3/8 in (B) with solvent line, no return lines |
| HH7532X | Electric Heated hose, 1/2 in (A), 3/8 in (B) with solvent line, 2 x 3/8 in return line |
| HH7533X | Electric Heated hose, 1/2 in (A), 3/8 in and 1/4 in (B) with solvent line, no return lines |
| HH7534X | Electric Heated hose, 1/2 in (A), 3/8 in and 1/4 in (B) with solvent line, 2 x 3/8 in return lines |
| HH7551X | Electric Heated hose, 1/2 in (A), 1/2 in (B) with solvent line, no return lines |
| HH7552X | Electric Heated hose, 1/2 in (A), 1/2 in (B) with solvent line, 2 x 3/8 in return lines |

150 ft (45 m)

| PART # | DESCRIPTION |
|---------|--|
| HH7321Y | Electric Heated hose, 3/8 in (A), 1/4 in (B) with solvent line, no return lines |
| HH7322Y | Electric Heated hose, 3/8 in (A), 1/4 in (B) with solvent line, 2 x 3/8 in return lines |
| HH7331Y | Electric Heated hose, 3/8 in (A), 3/8 in (B) with solvent line, no return lines |
| HH7332Y | Electric Heated hose, 3/8 in (A), 3/8 in (B) with solvent line, 2 x 3/8 in return lines |
| HH7521Y | Electric Heated hose, 1/2 in (A), 1/4 in (B) with solvent line, no return line |
| HH7522Y | Electric Heated hose, 1/2 in (A), 1/4 in (B) with solvent line, 2 x 3/8 in return line |
| HH7531Y | Electric Heated hose, 1/2 in (A), 3/8 in (B) with solvent line, no return lines |
| HH7532Y | Electric Heated hose, 1/2 in (A), 3/8 in (B) with solvent line, 2 x 3/8 in return lines |
| HH7533Y | Electric Heated hose, 1/2 in (A), 3/8 in and 1/4 in (B) with solvent line, no return lines |
| HH7534Y | Electric Heated hose, 1/2 in (A), 3/8 in and 1/4 in (B) with solvent line, 2 x 3/8 in return lines |
| HH7551Y | Electric Heated hose, 1/2 in (A), 1/2 in (B) with solvent line, no return lines |
| HH7552Y | Electric Heated hose, 1/2 in (A), 1/2 in (B) with solvent line, 2 x 3/8 in return lines |

200 ft (60 m)

| PART # | DESCRIPTION |
|---------|--|
| HH7321Z | Electric Heated hose, 3/8 in (A), 1/4 in (B) with solvent line, no return lines |
| HH7322Z | Electric Heated hose, 3/8 in (A), 1/4 in (B) with solvent line, 2 x 3/8 in return lines |
| HH7331Z | Electric Heated hose, 3/8 in (A), 3/8 in (B) with solvent line, no return lines |
| HH7332Z | Electric Heated hose, 3/8 in (A), 3/8 in (B) with solvent line, 2 x 3/8 in return lines |
| HH7521Z | Electric Heated hose, 1/2 in (A), 1/4 in (B) with solvent line, no return lines |
| HH7522Z | Electric Heated hose, 1/2 in (A), 1/4 in (B) with solvent line, 2 x 3/8 in return lines |
| HH7531Z | Electric Heated hose, 1/2 in (A), 3/8 in with solvent line, no return lines |
| HH7532Z | Electric Heated hose, 1/2 in (A), 3/8 in with solvent line, 2 x 3/8 in return lines |
| HH7533Z | Electric Heated hose, 1/2 in (A), 3/8 in and 1/4 in (B) with solvent line, no return lines |
| HH7534Z | Electric Heated hose, 1/2 in (A), 3/8 in and 1/4 in (B) with solvent line, 2 x 3/8 in return lines |
| HH7551Z | Electric Heated hose, 1/2 in (A), 1/2 in (B) with solvent line, no return lines |
| HH7552Z | Electric Heated hose, 1/2 in (A), 1/2 in (B) with solvent line, 2 x 3/8 in return lines |

ELECTRIC HEATED HOSE ACCESSORIES

| PART # | DESCRIPTION |
|--------|---|
| 18C175 | Controller for heated hose, stand alone, 240 Volt |
| 18A373 | Transformer, 480 Volt to 240 Volt |
| 420033 | Circulation kit for remote mix manifold, XP |
| 273185 | Circulation kit for remote mix manifold, XM |

WATER JACKETED HEATED HOSE –

Approved for explosive atmospheres ATEX and Class 1 Div 1 – 50 ft (15.2 m) sections

| PART # | DESCRIPTION |
|--------|---|
| 245840 | Single hose, 1/4 in (6.3 mm), 5000 psi (345 bar, 34.5 MPa) |
| 245841 | Single hose, 1/4 in (6.3 mm), 7250 psi (500 bar, 50 MPa) |
| 245842 | Single hose, 3/8 in (9.5 mm), 5000 psi (345 bar, 34.5 MPa) |
| 245843 | Single hose, 3/8 in (9.5 mm), 7250 psi (500 bar, 50 MPa) |
| 245844 | Single hose, 1/2 in (12.7 mm), 5000 psi (345 bar, 34.5 MPa) |
| 245845 | Single hose, 1/2 in (12.7 mm), 7250 psi (500 bar, 50 MPa) |
| 248118 | Dual hose, 1/2 in and 1/2 in (12.7 mm) 7250 psi (345 bar, 3.45 MPa) |
| 248119 | Dual hose, 3/8 in and 3/8 in (9.5 mm) 7250 psi (345 bar, 3.45 MPa) |
| 248120 | Dual hose, 1/2 in and 3/8 in (12.7 and 9.5 mm) 7250 psi (345 bar, 3.45 MPa) |
| 248121 | Dual hose, 3/8 in and 1/4 in (9.5 and 6.3 mm) 7250 psi (345 bar, 3.45 MPa) |

WATER JACKETED HEATED HOSE ACCESSORIES

| PART # | DESCRIPTION |
|--------|--|
| 25N580 | Kit, Hose Heat Circulation, XP skid, Viscon HP (245869) included |
| 26C051 | Kit, Hose Heat Circulation Retrofit, XP cart, no heater included |

HOSE INSULATION AND SCUFF GUARD –

(Provides extra insulation and protection of your hose)

| PART # | DESCRIPTION |
|--------|---|
| 24J525 | 50 ft insulation for one material hose |
| 246078 | Scuff Guard, 50 ft (15.2 m) blue braided polyester mesh 2.5 in diameter |
| 16T138 | Reusable scuff jacket with hook and loop fastener, 50 ft (15.2 m) |

FOR USE WITH E-MIX XT

Cannot be linked together

ELECTRIC HEATED HOSE – *Not approved for explosive atmospheres*

5000 psi (345 bar, 34.5 MPa) *Continuous length*

COMPLETE HEATED HOSE KIT (FAHERENHEIT)

| PART # | DESCRIPTION |
|---------|--|
| 2007169 | Kit, Heated Hose, 1/2 in x 1/2 in x 50 ft, Controller, F, Install Kit |
| 2007171 | Kit, Heated Hose, 1/2 in x 1/2 in x 100 ft, Controller, F, Install Kit |
| 2007173 | Kit, Heated Hose, 1/2 in x 3/8 in x 50 ft, Controller, F, Install Kit |
| 2007175 | Kit, Heated Hose, 1/2 in x 3/8 in x 100 ft, Controller, F, Install Kit |

COMPLETE HEATED HOSE KIT (CELCIUS)

| PART # | DESCRIPTION |
|---------|--|
| 2007170 | Kit, Heated Hose, 1/2 in x 1/2 in x 50 ft, Controller, C, Install Kit |
| 2007172 | Kit, Heated Hose, 1/2 in x 1/2 in x 100 ft, Controller, C, Install Kit |
| 2007174 | Kit, Heated Hose, 1/2 in x 3/8 in x 50 ft, Controller, C, Install Kit |
| 2007176 | Kit, Heated Hose, 1/2 in x 3/8 in x 100 ft, Controller, C, Install Kit |

HEATED HOSES

| PART # | DESCRIPTION |
|--------|---------------------------------------|
| HH5555 | Heated Hose, 1/2 in x 1/2 in x 50 ft |
| HH555X | Heated Hose, 1/2 in x 1/2 in x 100 ft |
| HH5535 | Heated Hose, 1/2 in x 3/8 in x 50 ft |
| HH553X | Heated Hose, 1/2 in x 3/8 in x 100 ft |

HEATED HOSE CONTROLLERS

| PART # | DESCRIPTION |
|---------|---|
| 2006697 | Kit, Controller, 240V, Heated Hose (F) |
| 2006698 | Kit, Controller, 240V, Heated Hose (C) |
| 2006565 | Heated Hose Controller Installation Kit |

ELBOW FITTING

| PART # | DESCRIPTION |
|--------|---|
| 100840 | 7500 psi (517 bar) 1/4 npt (m) x 1/4 npt (f), Street 90 |
| 164259 | 7250 psi (500 bar) 3/8 npt (m) x 1/4 npt (f), Street 90 |
| 155699 | 7250 psi (500 bar) 3/8 npt (m) x 3/8 npt (f), Street 90 |
| 166999 | 7250 psi (500 bar) 1/2 npt (m) x 1/4 npt (f), Street 90 |
| 158683 | 7250 psi (500 bar) 1/2 npt (m) x 1/2 npt (f), Street 90 |
| 15M987 | 7250 psi (500 bar) 1/2 npt (m) x 1/2 npt (f), Street 60 |
| 166590 | 7250 psi (500 bar) 3/4 npt (m) x 3/4 npt (f), Street 90 |

NIPPLE

| PART # | DESCRIPTION |
|--------|--|
| 503086 | 5000 psi (345 bar) 1 npt (m) x 1/2 npt (m), 2-1/8 in Reducing, Hex SST |
| 15R232 | 6600 psi (455 bar) 3/4 npt (m) x 1/2 npt (m), 2 in Reducing, Hex SST |
| 171439 | 6000 psi (455 bar) 1 npt (m) x 3/4 npt (m), 2 in Reducing, Hex SST |
| 166606 | 7000 psi (483 bar) 3/4 npt (m) x 3/8 npt (m), 4-1/2 in Reducing, Hex |
| 166846 | 7250 psi (500 bar) 1/4 npt (m) x 1/4 npsm (m), 1-3/16 in Reducing, Hex SST |
| 164672 | 7250 psi (500 bar) 3/8 npt (m) x 1/4 npsm (m), 2-3/4 in Reducing, Hex |
| 156849 | 7250 psi (500 bar) 3/8 npt (m) x 3/8 npt (m), 1-1/2 in Reducing, Hex |
| 156850 | 7250 psi (500 bar) 3/8 npt (m) x 3/8 npt (m), 2-1/2 in Reducing, Hex |
| 160790 | 7250 psi (500 bar) 3/8 npt (m) x 3/8 npt (m), 3-5/8 in Reducing, Hex |
| 158979 | 7250 psi (500 bar) 1/2 npt (m) x 3/8 npt (m), 2-3/4 in Reducing, Hex |
| 156877 | 7250 psi (500 bar) 1/2 npt (m) x 1/2 npt (m), 2-1/2 in Reducing, Hex |
| 157129 | 7250 psi (500 bar) 3/4 npt (m) x 3/8 npt (m), 3-1/4 in Reducing, Hex |
| 16R883 | 7250 psi (500 bar) 3/4 npt (m) x 1/2 npt (m), 2 in Reducing, Hex SST |
| 17J816 | 7250 psi (500 bar) 3/4 npt (m) x 3/4 npt (m), 2-1/2 in Reducing, Hex SST |
| 160032 | 7250 psi (500 bar) 3/4 npt (m) x 3/4 npt (m), 1-7/8 in Reducing, Hex |
| 175013 | 7250 psi (500 bar) 3/4 npt (m) x 3/4 npt (m), 2-1/2 in Reducing, Hex |
| 162449 | 7400 psi (510 bar) 1/2 npt (m) x 1/4 npt (m), 1-5/8 in Reducing, Hex |
| 159239 | 7400 psi (510 bar) 1/2 npt (m) x 3/8 npt (m), 1-5/8 in Reducing, Hex |
| 158491 | 7400 psi (510 bar) 1/2 npt (m) x 1/2 npt (m), 1-5/8 in Reducing, Hex |
| 162453 | 7500 psi (514 bar) 1/4 npt (m) x 1/4 npsm (m), 1-1/5 in Reducing, Hex |
| 156971 | 7500 psi (514 bar) 1/4 npt (m) x 1/4 npt (m), 1-3/8 in Reducing, Hex |
| 196181 | 7500 psi (514 bar) 1/4 npt (m) x 1/4 npsm (m), 1-1/5 in Reducing, Hex Nickle |
| 164856 | 8000 psi (552 bar) 3/8 npt (m) x 1/4 npsm (m), 1-5/8 in Reducing, Hex |
| 192593 | 8000 psi (552 bar) 3/4 npt (m) x 1/2 npsm (m), 2-3/4 in Reducing, Hex SST |

UNIONS

| PART # | DESCRIPTION |
|--------|---|
| 114339 | 5000 psi (345 bar), 1/4 npt (m) x 1/4 npsm (f), SST |
| 156172 | 5000 psi (345 bar), 3/4 npt (f) x 3/4 npt (f) |
| 113344 | 5500 psi (380 bar), 3/4 npt (f) x 1/2 npt (m) |
| 155653 | 6000 psi (455 bar), 1/2 npt (f) x 1/4 npt (f) |
| 207152 | 7250 psi (500 bar), 3/8 npt (f) x 3/8 npsm (f) |
| 155864 | 7250 psi (500 bar), 1/2 npt (m) x 1/2 npsm (f) |
| 155865 | 7250 psi (500 bar), 1/2 npt (f) x 1/2 npsm (f) |
| 156173 | 7400 psi (510 bar), 3/8 npt (f) x 3/8 npsm (f) |
| 159153 | 7500 psi (514 bar), 3/8 npt (f) x 1/4 npt (f) |
| 157705 | 7500 psi (514 bar), 3/8 npsm (f) x 1/4 npt (m) |
| 155665 | 7500 psi (514 bar), 3/8 npt (f) x 3/8 npsm (f) |
| 235208 | 7500 psi (514 bar), 3/8 npt (f) x 3/8 npsm (f), SST |
| 162505 | 7500 psi (514 bar), 1/2 npsm (f) x 3/8 npt (m) |
| 158256 | 7500 psi (514 bar), 1/2 npt (m) x 3/8 npsm (f) |
| 155570 | 10000 psi (690 bar), 1/4 npt (f) x 1/4 npsm (f) |
| 156823 | 10000 psi (690 bar), 1/4 npt (m) x 1/4 npsm (f) |

TEE FITTING

| PART # | DESCRIPTION |
|--------|--|
| 16U937 | 6000 psi (455 bar) 1 in npt(m), 3/4 in npt (f), 3/8 in npt (f) |
| 15R875 | 7250 psi (500 bar) 1/4 in npt(m), 1/4 in npt (f), 1/4 in npt (f) |
| 15R874 | 7250 psi (500 bar) 3/8 in npt(m), 3/8 in npt (f), 3/8 in npt (f) |
| 15R873 | 7250 psi (500 bar) 1/2 in npt(m), 1/2 in npt (f), 1/2 in npt (f) |
| 17B815 | 7250 psi (500 bar) 3/4 in npt(m), 3/4 in npt (m), 3/8 in npt (f) |

REDUCING BUSHINGS

| PART # | DESCRIPTION |
|--------|--|
| 158586 | 6000 psi (455 bar) 1 npt (m) x 3/4 npt (f) |
| 159841 | 7250 psi (500 bar) 3/8 npt (m) x 1/4 npt (f) |
| 100206 | 7250 psi (500 bar) 1/2 npt (m) x 1/4 npt (f) |
| 121433 | 7250 psi (500 bar) 1/2 npt (m) x 3/8 npt (f) |
| 16T315 | 7250 psi (500 bar) 3/4 npt (m) x 1/2 npt (f) |
| 15R067 | 7250 psi (500 bar) 1 npt (m) x 1/2 npt (f) |
| 171439 | 7250 psi (500 bar) 1 npt (m) x 3/4 npt (f) |

COUPLING

| PART # | DESCRIPTION |
|--------|--|
| 113093 | 7250 psi (500 bar) 1/4 npt (f) x 1/4 npt (f) |
| 162024 | 7250 psi (500 bar) 3/8 npt (f) x 3/8 npt (f) |
| 158581 | 7250 psi (500 bar) 1/2 npt (f) x 1/2 npt (f) |

COUPLING ADAPTER

| PART # | DESCRIPTION |
|--------|--|
| 113093 | 7250 psi (500 bar) 3/8 npt (m) x 3/8 npt (f). Used for static Mixer 15E592 |
| 162024 | 7250 psi (500 bar) 3/8 npt (f) x 3/8 npsm (m) |
| 158581 | 7250 psi (500 bar) 3/8 npt (f) x 1/4 npt (m) |

PLUG

| PART # | DESCRIPTION |
|--------|--|
| 100721 | 7250 psi (500 bar) 1/4 npt, hex, socket, short |
| 101754 | 7250 psi (500 bar) 3/8 npt, hex, socket, short |
| 100361 | 7250 psi (500 bar) 1/2 npt, hex, socket, short |

BALL VALVES

| PART # | DESCRIPTION |
|--------|---|
| 102646 | 5000 psi (345 bar), 1/4 npt (m) x 1/4 npsm (f), SST |
| 102644 | 5000 psi (345 bar), 3/4 npt (f) x 3/4 npt (f) |
| 239018 | 6000 psi (455 bar), 1/2 npt (f) x 1/4 npt (f) |
| 248271 | 7250 psi (500 bar), 3/8 npt (f) x 3/8 npsm (f) |
| 214037 | 7250 psi (500 bar), 1/2 npt (m) x 1/2 npsm (f) |
| 210657 | 7250 psi (500 bar), 1/2 npt (f) x 1/2 npsm (f) |
| 238635 | 7400 psi (510 bar), 3/8 npt (f) x 3/8 npsm (f) |
| 210659 | 7500 psi (514 bar), 3/8 npt (f) x 1/4 npt (f) |
| 235992 | 7500 psi (514 bar), 3/8 npsm (f) x 1/4 npt (m) |
| 210658 | 7500 psi (514 bar), 3/8 npt (f) x 3/8 npsm (f) |
| 262739 | 7500 psi (514 bar), 3/8 npt (f) x 3/8 npsm (f), SST |
| 262740 | 7500 psi (514 bar), 1/2 npsm (f) x 3/8 npt (m) |
| 237303 | 7500 psi (514 bar), 1/2 npt (m) x 3/8 npsm (f) |
| 237304 | 10000 psi (690 bar), 1/4 npt (f) x 1/4 npsm (f) |

HOPPERS AND FEED PUMPS*

*Feed pump kits For 55 gal (200 L) drums

| PART # | DESCRIPTION |
|--------|--|
| 24Y389 | Hopper, 10 Gal (38 L) SST, for XP |
| 24Y390 | Hopper, 10 Gal (38 L) SST, for XM |
| 25N582 | Hopper, 25 gal (95 L), SST lined, Bare (no heater, pump or agitator) |
| 26C482 | Hopper 25 gal (95 L), SST Lined, includes immersion heater (240V), Monark 5:1 feed pump and Xtreme Duty Agitator |
| 26B279 | Hopper 25 gal (95 L), SST Lined, includes immersion heater (480V), Monark 5:1 feed pump and Xtreme Duty Agitator |
| 25N675 | Hopper, 25 gal (95 L), SST lined, includes immersion heater (240V), Xtreme duty Agitator |
| 25N676 | Hopper, 25 Gal (95 L), SST lined, includes immersion heater (240V) gravity feed (no feed pump or agitator) |
| 26C549 | Tank base kit, includes fork pockets and casters for 25 gal hoppers. |

AGITATORS

| PART # | DESCRIPTION |
|--------|---|
| 256274 | Twistork (Carbon Steel) drum length agitator kit w/air connections |
| 235534 | Twistork (Stainless Steel) drum length agitator kit w/air connections |
| 243340 | 5 gal pail agitator kit with lid and mounting hardware |
| 25A598 | Xtreme Duty Agitator, Bare |
| 25A599 | Xtreme Duty Agitator on drum cover with handles |
| 25A600 | Xtreme Duty Agitator on drum cover with elevator |
| 25A601 | Xtreme Duty Agitator on drum cover with elevator and 5:1 Monark |
| 25A602 | Xtreme Duty Agitator on drum cover with elevator and 5:1 Monark SST |
| 25A603 | Xtreme Duty Agitator on drum cover with elevator and 10:1 President |
| 25A604 | Xtreme Duty Agitator on drum cover with elevator and 10:1 President SST |
| 26C729 | Expanding Blade Agitator |

PRESSURETRAK

Approved for use in hazardous locations

| PART # | DESCRIPTION |
|--------|--|
| 26C427 | Pressuretrak for use with XP units using the XL6500 air motor |
| 26C452 | PressureTrak for use with the XP-HF and XPs-HF units using the XL10000 air motor |

PRESSURE MONITOR

| PART # | DESCRIPTION |
|--------|--|
| 262940 | Pressure Monitor, electric wall power, for XP units with XL6500 air motor |
| 262942 | Pressure Monitor, turbine power, for XP units with XL6500 air motor |
| 26C008 | Pressure Monitor, electric wall power, for XP-HF and XPs-HF units with XL10000 air motor |
| 26C009 | Pressure Monitor, turbine power, for XP-HF and XPs-HF units with XL10000 air motor |

MANIFOLDS

| PART # | DESCRIPTION |
|---------|---|
| 24M398 | XP Quick-Set mix manifold with carriage, A/B pressure gauges and A/B flush valves |
| 24Z934 | Remote Mix manifold, carriage only, water heated block, XP |
| 255684 | Mix Manifold XM |
| 256980 | Remote mix manifold conversion kit with protective guard, XM |
| 262807 | Standard mix manifold, XP, no carriage |
| 262522 | Carriage Only – no mix manifold |
| 2007388 | E-Mix XT recirculation manifold with pressure relief |
| 262783 | Circulation manifold w/pressure relief for 5000 psi (345 bar) rated for XPs |
| 262806 | Circulation manifold w/pressure relief for 7250 psi (345 bar) rated for XPs |
| 262809 | Valve, over pressure relief, gold, 5000 psi (345 bar) for E-Mix XT and XPs |
| 262520 | Valve, over pressure relief, silver, 7250 psi (500 bar) for XPs |

FLUID FILTERS

| PART # | DESCRIPTION |
|--------|---|
| 16V583 | External Paint Outlet Filter Kit |
| 19D955 | Poly Filter Support for integral and external filters |
| 244841 | Carbon Steel Filter Support for integral and external filters |
| 224458 | 30 Mesh filter element – 2 Pack |
| 224459 | 60 Mesh filter element – 2 Pack |
| 224468 | 100 Mesh filter element – 2 Pack |
| 16G819 | Xtreme Filter Cap Wrench |

VISCON HEATERS

| PART # | DESCRIPTION |
|--------|--|
| 245848 | Viscon HP Haz-Loc 120 VAC, 2300 watts, 19.2 amps |
| 245862 | Viscon HP Haz-Loc 200 VAC, 4000 watts, 20.0 amps |
| 245863 | Viscon HP Haz-Loc 240 VAC, 4000 watts, 16.7 amps |
| 246254 | Viscon HP Haz-Loc 400 VAC, 4000 watts, 10.5 amps |
| 245864 | Viscon HP Haz-Loc 480 VAC, 4000 watts, 8.3 amps |
| 245867 | Viscon HP Non-Hazardous 120 VAC, 2300 watts, 19.2 amps |
| 245868 | Viscon HP Non-Hazardous 200 VAC, 4000 watts, 20.0 amps |
| 245869 | Viscon HP Non-Hazardous 240 VAC, 4000 watts, 16.7 amps |
| 246276 | Viscon HP Non-Hazardous 400 VAC, 4000 watts, 10.5 amps |
| 245870 | Viscon HP Non-Hazardous 480 VAC, 4000 watts, 8.3 amps |
| 24W248 | Viscon HF Haz-Loc 240 VAC, 5400 watts, 22.5 amps |
| 26C476 | Viscon HF Haz-Loc 480 VAC, 5400 watts, 11.3 amps |
| 24P016 | Viscon HF Non-Hazardous 240 VAC, 5400 watts, 22.5 amps |
| 26C475 | Viscon HF Non-Hazardous 480 VAC, 5400 watts, 11.3 amps |

ADDITIONAL HEATER ACCESSORIES

| PART # | DESCRIPTION |
|--------|--|
| 19D968 | Heater mounting kit for Viscon HP and HF heater on XP/XM |
| 19D955 | Heater, Band, 55 gal (200 L), 240 Volts, 1000 watts, 4.35 amps |
| 244841 | Cable assembly, 1 gland, 30 m |
| 288527 | Cable assembly, 2 glands, 8 m* |
| 116635 | Cable assembly, 2 glands, 15 m* |
| 24Z273 | Cable assembly, 2 glands, 30 m* |
| 121171 | Cable insert for non-hazardous locations only, no cable |

DUAL-FLO HEATERS

| PART # | DESCRIPTION |
|---------|--|
| 2007357 | Dual-Flo Heater for E-Mix XT Complete |
| 2007208 | Heater rod and temp sensor repair kit for Dual-Flo Heater. |

RATIO CHECK KITS

| PART # | DESCRIPTION |
|---------|------------------------------|
| 2000308 | Ratio Check Kit for XPs |
| 2007389 | Ratio Check Kit for E-Mix XT |
| 2000697 | Ratio Check Restrictor Kit |

STATIC MIXING – 7250 psi (500 bar, 50.0 MPa)

| PART # | DESCRIPTION |
|--------|--|
| 248925 | 1/4 in x 12 ft whip hose mixing kit, includes (2) 15E592 housings and 6 static mixer inserts |
| 262478 | Static Mixer Housing, 1/2 in ID x 5 in (127mm), uses 248927 disposable elements |
| 248927 | 25-pack, Plastic (acetal) disposable static mixer, 1/2 in 12 element |
| 511352 | Stainless steel static mixer, 12 element, 3/8 in x 9.5 in (241mm) |

LEARN MORE AT GRACO.COM/ACCESSORIES

XTREME LOWERS



XP PUMP LOWERS

| PART # | DESCRIPTION |
|--------|--|
| L036C0 | 36cc Xtreme Pump for XP, XP-HF, and XPs-HF |
| L048C0 | 48cc Xtreme Pump for XP, XP-HF, and XPs-HF |
| L054C0 | 54cc Xtreme Pump for XP, XP-HF, and XPs-HF |
| L058C0 | 58cc Xtreme Pump for XP, XP-HF, and XPs-HF |
| L072C0 | 72cc Xtreme Pump for XP, XP-HF, and XPs-HF |
| L085C0 | 85cc Xtreme Pump for XP, XP-HF, and XPs-HF |
| L090C0 | 90cc Xtreme Pump for XP, XP-HF, and XPs-HF |
| L115C0 | 115cc Xtreme Pump for XP, XP-HF, and XPs-HF |
| L14AC0 | 145cc Xtreme Pump for XP, XP-HF, and XPs-HF |
| L18AC0 | 180cc Xtreme Pump for XP, XP-HF, and XPs-HF |
| L22AC0 | 220cc Xtreme Pump for XP Only |
| L22XC0 | 220cc Xtreme Pump for XP-HF, and XPs-HF only |
| L25AC0 | 250cc Xtreme Pump for XP, XP-HF, and XPs-HF |
| L29AC0 | 290cc Xtreme Pump for XP, XP-HF, and XPs-HF |



XM PUMP LOWERS

| PART # | DESCRIPTION |
|--------|---|
| L145C3 | 145cc Xtreme Pump for XM70, No Filter |
| L145C4 | 145cc Xtreme Pump for XM70, Built-In Filter |
| L180C3 | 180cc Xtreme Pump for XM70, No Filter |
| L180C4 | 180cc Xtreme Pump for XM70, Built-In Filter |
| L220C3 | 220cc Xtreme Pump for XM50, No Filter |
| L220C4 | 220cc Xtreme Pump for XM50, Built-In Filter |
| L250C3 | 250cc Xtreme Pump for XM50, No Filter |
| L250C4 | 250cc Xtreme Pump for XM50, Built-In Filter |



E-MIX XT PUMP LOWER

| PART # | DESCRIPTION |
|---------|---|
| 2007207 | Pro Connect Endurance Pump for E-Mix XT A or B side |

PUMP REPAIR KITS



REPAIR KITS

UHMWPE/PTFE packings. Ideal for chemical resistance and durability in applications below 140°F (60°C).

| PART # | DESCRIPTION |
|--------|--|
| 25D249 | 36cc Xtreme Pump Lower Repair Kit |
| 25D250 | 48cc Xtreme Pump Lower Repair Kit |
| 25D251 | 54cc Xtreme Pump Lower Repair Kit |
| 25D252 | 58cc Xtreme Pump Lower Repair Kit |
| 25D253 | 72cc Xtreme Pump Lower Repair Kit |
| 25D254 | 85cc Xtreme Pump Lower Repair Kit |
| 25D255 | 90cc Xtreme Pump Lower Repair Kit |
| 25D256 | 97cc Xtreme Pump Lower Repair Kit |
| 25D257 | 115cc Xtreme Pump Lower Repair Kit, Series G and older |
| 273269 | 115cc Xtreme Pump Lower Repair Kit, Series H and newer |
| 25D258 | 145cc Xtreme Pump Lower Repair Kit |
| 25D259 | 180cc Xtreme Pump Lower Repair Kit |
| 25D260 | 220cc Xtreme Pump Lower Repair Kit |
| 25D261 | 250cc Xtreme Pump Lower Repair Kit |
| 25D262 | 290cc Xtreme Pump Lower Repair Kit |



PTFE packings. Ideal for chemical resistance and higher temps.

| PART # | DESCRIPTION |
|--------|--|
| 25D239 | 36cc Xtreme Pump Lower Repair Kit |
| 25D240 | 48cc Xtreme Pump Lower Repair Kit |
| 273241 | 58cc Xtreme Pump Lower Repair Kit |
| 25D242 | 85cc Xtreme Pump Lower Repair Kit |
| 25D243 | 115cc Xtreme Pump Lower Repair Kit, Series G and older |
| 273268 | 115cc Xtreme Pump Lower Repair Kit, Series H and newer |
| 25D244 | 145cc Xtreme Pump Lower Repair Kit |
| 25D245 | 180cc Xtreme Pump Lower Repair Kit |
| 25D246 | 220cc Xtreme Pump Lower Repair Kit |
| 25D247 | 250cc Xtreme Pump Lower Repair Kit |
| 273268 | 290cc Xtreme Pump Lower Repair Kit |



E-MIX XT REPAIR KIT

| PART # | DESCRIPTION |
|--------|--------------------------|
| 25D252 | Packing Kit for E-Mix XT |

CERAMIC BALLS

| XTREME LOWER | CERAMIC PISTON BALL | CERAMIC INLET BALL |
|--------------|---------------------|--------------------|
| 115* | 111453 | 119264 |
| 145 | 111453 | 119264 |
| 180 | 111453 | 119264 |
| 220 | 118602 | 131271 |
| 290 | 117321 | 131271 |

*115cc Series H and newer.



| | | XP50 | XP50-HF | | |
|----------------|-----------------------------------|--|--|--|--|
| SPECIFICATIONS | FRAME | Cart | Cart | | |
| | MOTOR SIZE (CC) | XL 6500 | XL 10000 | | |
| | MAX FLUID PRESSURE (BAR) | 5000 (345) | 5000 (345) | | |
| | GPM (LPM) AT 40 CPM (APPROXIMATE) | 3 (11.4) | 4 (15.1) | | |
| | HOPPERS | 7 Gallon Plastic Hoppers | 7 Gallon Plastic Hoppers | | |
| MODEL | CONFIGURATION | HAZARDOUS LOCATION | NON-HAZARDOUS LOCATION | HAZARDOUS LOCATION | NON-HAZARDOUS LOCATION |
| | | Bare | 282102 – 1:1 282202 – 2:1 282302 – 3:1 282402 – 4:1 | | 573102 – 1:1 573202 – 2:1 573302 – 3:1 573402 – 4:1 |
| | With Primary Heaters | 282104 – 1:1 282204 – 2:1 282304 – 3:1 282404 – 4:1 | 575105 – 1:1 575205 – 2:1 575305 – 3:1 575405 – 4:1 | 573104 – 1:1 573204 – 2:1 573304 – 3:1 573404 – 4:1 | 573105 – 1:1 573205 – 2:1 573305 – 3:1 573405 – 4:1 |
| | | With Primary Heaters Hose Heat | 575106 – 1:1 575206 – 2:1 575306 – 3:1 575406 – 4:1 | 575107 – 1:1 575207 – 2:1 575307 – 3:1 575407 – 4:1 | 573106 – 1:1 573206 – 2:1 573306 – 3:1 573406 – 4:1 |

XP70

XP70-HF

| | | XP70 | XP70-HF | | |
|----------------|-----------------------------------|--|--|--|--|
| SPECIFICATIONS | FRAME | Skid | Skid | | |
| | MOTOR SIZE (CC) | XL 6500 | XL 10000 | | |
| | MAX FLUID PRESSURE (BAR) | 7250 (500) | 7250 (500) | | |
| | GPM (LPM) AT 40 CPM (APPROXIMATE) | 2 (7.6) | 3 (11.4) | | |
| | HOPPERS | 7 Gallon Plastic Hoppers | 7 Gallon Plastic Hoppers | | |
| MODEL | CONFIGURATION | HAZARDOUS LOCATION | NON-HAZARDOUS LOCATION | HAZARDOUS LOCATION | NON-HAZARDOUS LOCATION |
| | | Bare | 571102 – 1:1 571202 – 2:1 571302 – 3:1 571402 – 4:1 | | 572102 – 1:1 572202 – 2:1 572302 – 3:1 572402 – 4:1 |
| | With Primary Heaters | 571104 – 1:1 571204 – 2:1 571304 – 3:1 571404 – 4:1 | 576105 – 1:1 576205 – 2:1 576305 – 3:1 576405 – 4:1 | 572104 – 1:1 572204 – 2:1 572304 – 3:1 572404 – 4:1 | 572105 – 1:1 572205 – 2:1 572305 – 3:1 572405 – 4:1 |
| | | With Primary Heaters Hose Heat | 576106 – 1:1 576206 – 2:1 576306 – 3:1 576406 – 4:1 | 576107 – 1:1 576207 – 2:1 576307 – 3:1 576407 – 4:1 | 572106 – 1:1 572206 – 2:1 572306 – 3:1 572406 – 4:1 |

| INCLUDES | MODEL | BARE: xxxxx2 | W/PRIMARY HEATERS: xxxxx4 | W/PRIMARY HEATERS: xxxxx5 | W/PRIMARY HEATERS AND HOSE HEAT: xxxxx6 | W/PRIMARY HEATERS AND HOSE HEAT: xxxxx7 |
|-----------|------------------|--|--|--|--|--|
| | MIX MANIFOLD | On unit | On unit | On unit | Remote Carriage Included | Remote Carriage Included |
| | PRIMARY HEATER | N/A | Viscon* 240V | Viscon* 240V | Viscon* 240V | Viscon* 240V |
| | RATIO- FIXED | (available 1:1, 2:1, 3:1, 4:1) | (available 1:1, 2:1, 3:1, 4:1) | (available 1:1, 2:1, 3:1, 4:1) | (available 1:1, 2:1, 3:1, 4:1) | (available 1:1, 2:1, 3:1, 4:1) |
| | SOLVENT PUMP | N/A | 45:1 Merkur | 45:1 Merkur | 45:1 Merkur | 45:1 Merkur |
| | JUNCTION BOX | N/A | N/A | Included | N/A | Included |
| | HEATED HOSE | N/A | N/A | N/A | Water Jacketed | Electric Controller |
| | RATIO ASSURANCE | N/A | N/A | N/A | PressureTrak | PressureTrak |
| | GUN | XTR+ | XTR+ | XTR+ | XTR+ | XTR+ |
| | HOSE | 3/8 in x 25 ft (9.5 x 7.5 m) Xtreme Duty Airless Hose 1/4 in x 10 ft (6.4 mm x 3 m) Xtreme Duty Whip Hose | 3/8 in x 25 ft (9.5 x 7.5 m) Xtreme Duty Airless Hose 1/4 in x 10 ft (6.4 mm x 3 m) Xtreme Duty Whip Hose | 3/8 in x 25 ft (9.5 x 7.5 m) Xtreme Duty Airless Hose 1/4 in x 10 ft (6.4 mm x 3 m) Xtreme Duty Whip Hose | 3/8 in x 25 ft (9.5 x 7.5 m) Xtreme Duty Airless Hose 1/4 in x 10 ft (6.4 mm x 3 m) Xtreme Duty Whip Hose | 3/8 in x 25 ft (9.5 x 7.5 m) Xtreme Duty Airless Hose 1/4 in x 10 ft (6.4 mm x 3 m) Xtreme Duty Whip Hose |
| APPROVALS | Haz-Loc Approved | Haz-Loc Approved | Ordinary Location | Haz-Loc Approved | Ordinary Location | |

*Viscon HP 240V heaters standard on XP-50 and XP-70. Viscon HF 240V heaters standard on XP50-hf and XP70-hf.



| | | XP50S-HF | XP70S-HF | | | |
|----------------|-----------------------------------|---|---|--------------------|------------------------|--------------------|
| SPECIFICATIONS | FRAME | Skid | Skid | | | |
| | MOTOR SIZE (CC) | XL 10000 | XL 10000 | | | |
| | MAX FLUID PRESSURE (BAR) | 5000 (345) | 7250 (500) | | | |
| | GPM (LPM) AT 40 CPM (APPROXIMATE) | 4 (15.1) | 3 (11.4) | | | |
| | HOPPERS | 25 gal SST Heated with Agitator and Monark Feed Pumps | 25 gal SST Heated with Agitator and Monark Feed Pumps | | | |
| MODEL | CONFIGURATION | VOLTAGE | NON-HAZARDOUS LOCATION | HAZARDOUS LOCATION | NON-HAZARDOUS LOCATION | HAZARDOUS LOCATION |
| | | ELECTRIC HEATED HOSE | 240V | 578103 – 1:1 | 578113 – 1:1 | 577103 – 1:1 |
| | 578203 – 2:1 | | | 578213 – 2:1 | 577203 – 2:1 | 577213 – 2:1 |
| | 578303 – 3:1 | | 578313 – 3:1 | 577303 – 3:1 | 577313 – 3:1 | |
| | 578403 – 4:1 | | 578413 – 4:1 | 577403 – 4:1 | 577413 – 4:1 | |
| | 480V | 578123 – 1:1 | 578133 – 1:1 | 577123 – 1:1 | 577133 – 1:1 | |
| | | 578223 – 2:1 | 578233 – 2:1 | 577223 – 2:1 | 577233 – 2:1 | |
| | | 578323 – 3:1 | 578333 – 3:1 | 577323 – 3:1 | 577333 – 3:1 | |
| | | 578423 – 4:1 | 578433 – 4:1 | 577423 – 4:1 | 577433 – 4:1 | |
| | 240V | 578101 – 1:1 | 578111 – 1:1 | 577101 – 1:1 | 577111 – 1:1 | |
| | | 578201 – 2:1 | 578211 – 2:1 | 577201 – 2:1 | 577211 – 2:1 | |
| | | 578301 – 3:1 | 578311 – 3:1 | 577301 – 3:1 | 577311 – 3:1 | |
| 578401 – 4:1 | | 578411 – 4:1 | 577401 – 4:1 | 577411 – 4:1 | | |
| 480V | 578121 – 1:1 | 578131 – 1:1 | 577121 – 1:1 | 577131 – 1:1 | | |
| | 578221 – 2:1 | 578231 – 2:1 | 577221 – 2:1 | 577231 – 2:1 | | |
| | 578321 – 3:1 | 578331 – 3:1 | 577321 – 3:1 | 577331 – 3:1 | | |
| | 578421 – 4:1 | 578431 – 4:1 | 577421 – 4:1 | 577431 – 4:1 | | |

| MODEL | ELECTRIC HEATED HOSE: xxx03 | ELECTRIC HEATED HOSE: xxx23 | WATER JACKETED HOSE: xxx01 | WATER JACKETED HOSE: xxx21 |
|----------------|---|---|---|---|
| MIX MANIFOLD | Remote Carriage Included | Remote Carriage Included | Remote Carriage Included | Remote Carriage Included |
| PRIMARY HEATER | Viscon HF 240V | Viscon HF 480V | Viscon HF 240V | Viscon HF 480V |
| RATIO – FIXED | (available 1:1, 2:1, 3:1, 4:1) | (available 1:1, 2:1, 3:1, 4:1) | (available 1:1, 2:1, 3:1, 4:1) | (available 1:1, 2:1, 3:1, 4:1) |
| SOLVENT PUMP | 45:1 Merkur | 45:1 Merkur | 45:1 Merkur | 45:1 Merkur |
| JUNCTION BOX | Included | Included | Included | Included |
| HEATED HOSE | Electric Controller | Electric Controller | Water Jacketed | Water Jacketed |
| GUN | XTR+ | XTR+ | XTR+ | XTR+ |
| HOSE | 3/8 in x 25 ft (9.5 x 7.5 m) Xtreme Duty Airless Hose 1/4 in x 10 ft (6.4 mm x 3 m) Xtreme Duty Whip Hose | 3/8 in x 25 ft (9.5 x 7.5 m) Xtreme Duty Airless Hose 1/4 in x 10 ft (6.4 mm x 3 m) Xtreme Duty Whip Hose | 3/8 in x 25 ft (9.5 x 7.5 m) Xtreme Duty Airless Hose 1/4 in x 10 ft (6.4 mm x 3 m) Xtreme Duty Whip Hose | 3/8 in x 25 ft (9.5 x 7.5 m) Xtreme Duty Airless Hose 1/4 in x 10 ft (6.4 mm x 3 m) Xtreme Duty Whip Hose |
| APPROVALS | Ordinary Location | Ordinary Location | Ordinary Location | Ordinary Location |

| MODEL | ELECTRIC HEATED HOSE: xxx13 | ELECTRIC HEATED HOSE: xxx33 | WATER JACKETED HOSE: xxx11 | WATER JACKETED HOSE: xxx31 |
|----------------|---|---|---|---|
| MIX MANIFOLD | Remote Carriage Included | Remote Carriage Included | Remote Carriage Included | Remote Carriage Included |
| PRIMARY HEATER | Viscon HF 240V | Viscon HF 480V | Viscon HF 240V | Viscon HF 480V |
| RATIO – FIXED | (available 1:1, 2:1, 3:1, 4:1) | (available 1:1, 2:1, 3:1, 4:1) | (available 1:1, 2:1, 3:1, 4:1) | (available 1:1, 2:1, 3:1, 4:1) |
| SOLVENT PUMP | 45:1 Merkur | 45:1 Merkur | 45:1 Merkur | 45:1 Merkur |
| JUNCTION BOX | Included | Included | Included | Included |
| HEATED HOSE | Electric Controller | Electric Controller | Water Jacketed | Water Jacketed |
| GUN | XTR+ | XTR+ | XTR+ | XTR+ |
| HOSE | 3/8 in x 25 ft (9.5 x 7.5 m) Xtreme Duty Airless Hose 1/4 in x 10 ft (6.4 mm x 3 m) Xtreme Duty Whip Hose | 3/8 in x 25 ft (9.5 x 7.5 m) Xtreme Duty Airless Hose 1/4 in x 10 ft (6.4 mm x 3 m) Xtreme Duty Whip Hose | 3/8 in x 25 ft (9.5 x 7.5 m) Xtreme Duty Airless Hose 1/4 in x 10 ft (6.4 mm x 3 m) Xtreme Duty Whip Hose | 3/8 in x 25 ft (9.5 x 7.5 m) Xtreme Duty Airless Hose 1/4 in x 10 ft (6.4 mm x 3 m) Xtreme Duty Whip Hose |
| APPROVALS | Haz-Loc Approved | Haz-Loc Approved | Haz-Loc Approved | Haz-Loc Approved |



| | | E-MIX | |
|--------------------------|---------------------------|--|---|
| SPECIFICATIONS | FRAME | Cart | |
| | MAX FLUID PRESSURE (BAR) | 5000 (345) | |
| | MAXIMUM GPM (LPM) | 1.5 (5.7) | |
| | VOLTAGE | 240V / 40A | |
| | HOPPERS | 7 Gallon Plastic | |
| | APPROVALS | Ordinary Location | |
| | SERIES TYPE | STANDARD XT | PRO XT |
| | | PART NUMBER | 2004087 / 2005565 |
| | GUN | XTR5+ | XTR5+ |
| | HOSE | 3/8 in x 25 ft (9.5 x 7.5 m) Xtreme Duty Airless Hose 1/4 in x 10 ft (6.4 mm x 3 m) Xtreme Duty Whip Hose | 3/8 in x 25 ft (9.5 x 7.5 m) Xtreme Duty Airless Hose 1/4 in x 10 ft (6.4 mm x 3 m) Xtreme Duty Whip Hose |
| FLUSH PUMP | FastClean | FastClean | |
| PRIMARY HEATER | DualFlo On-Demand | DualFlo On-Demand | |
| RATIO ASSURANCE | RatioGuard | RatioGuard | |
| RATIO CHECK | Included | Included | |
| PUMP TYPE | Endurance with ProConnect | Endurance with ProConnect | |
| REMOTE MANIFOLD CARRIAGE | N/A | Included | |
| LIGHT TOWER | N/A | Included | |
| REMOTE MIX HOSES | N/A | 200 ft x 1/2 in (4 x 50 ft) "A" and "B" Material Hose 100 ft x 3/8 in (2 x 50 ft) "B" Material Hose (ratios over 3:1) 100 ft x 1/4 in (2 x 50 ft) Solvent Flush Hose | |
| HOSE RACK | N/A | Included | |

INCLUDES



| | | XM50 | XM70 | | | | | |
|---|--------------------------|----------------------------------|----------------------------------|------------------------|-------------------------------|-----------------------------|------------------------|-------------------------------|
| SPECIFICATIONS | FRAME | Skid | Skid | | | | | |
| | MOTOR SIZE (CC) | XL 6500 | XL 6500 | | | | | |
| | MAX FLUID PRESSURE (BAR) | 5200 (358) | 6300 (434) | | | | | |
| | MAXIMUM GPM (LPM) | 3 (11.4) | 3 (11.4) | | | | | |
| | MINIMUM GPM (LPM) | 1 qt/min (0.95 lpm) | 1 qt/min (0.95 lpm) | | | | | |
| | MIX RATIO RANGE | 1:1 to 10:1 (in 0.01 increments) | 1:1 to 10:1 (in 0.01 increments) | | | | | |
| | MODEL | CONFIGURATION | VOLTAGE | NON-HAZARDOUS LOCATION | HAZARDOUS LOCATION COMPONENTS | HAZARDOUS LOCATION APPROVED | NON-HAZARDOUS LOCATION | HAZARDOUS LOCATION COMPONENTS |
| Bare | | | | | | XM5N00 | | |
| | | With Primary Heaters | 240V | | | XM5E00 | | |
| Electric Heated Hose | | | 240V | XM5M0E | XM5J0E | | XM7M0E | XM7J0E |
| | | 480V | XM5H0E | XM5K0E | | XM7H0E | XM7K0E | |
| Water Jacketed Hose | | 240V | XM5M0W | XM5J0W | | XM7M0W | XM7J0W | |
| | | 480V | XM5H0W | XM5K0W | | XM7H0W | XM7K0W | |
| Electric Heated Hose and 25 Gallon Heated Hoppers | | 240V | XM5M2E | XM5J2E | | XM7M2E | XM7J2E | |
| | | 480V | XM5H2E | XM5K2E | | XM7H2E | XM7K2E | |
| Water Jacketed Hose and 25 Gallon Heated Hoppers | | 240V | XM5M2W | XM5J2W | | XM7M2W | XM7J2W | |
| | | 480V | XM5H2W | XM5K2W | | XM7H2W | XM7K2W | |

| MODEL | BARE: xxxN00 | W/PRIMARY HEATERS: xxxE00 | ELECTRIC HEATED HOSE: xxxJ0E | WATER JACKETED HOSE: xxxJ0W | W/25 GALLON HOPPERS: xxxJ2E | W/25 GALLON HOPPERS: xxxJ2W |
|----------------|---|---|---|---|---|---|
| MIX MANIFOLD | Remote Carriage Included | Remote Carriage Included | Remote Carriage Included | Remote Carriage Included | Remote Carriage Included | Remote Carriage Included |
| PRIMARY HEATER | N/A | Viscon HP | Viscon HF | Viscon HF | Viscon HF | Viscon HF |
| SOLVENT PUMP | 30:1 Merkur | 30:1 Merkur | 30:1 Merkur | 30:1 Merkur | 30:1 Merkur | 30:1 Merkur |
| JUNCTION BOX | Included | Included | Included | Included | Included | Included |
| HEATED HOSE | N/A | N/A | Electric Controller | Water Jacketed | Electric Controller | Water Jacketed |
| GUN | XTR+ | XTR+ | XTR+ | XTR+ | XTR+ | XTR+ |
| HOSE | 3/8 in x 25 ft (9.5 x 7.5 m) Xtreme Duty Airless Hose 1/4 in x 10 ft (6.4 mm x 3 m) Xtreme Duty Whip Hose | 3/8 in x 25 ft (9.5 x 7.5 m) Xtreme Duty Airless Hose 1/4 in x 10 ft (6.4 mm x 3 m) Xtreme Duty Whip Hose | 3/8 in x 25 ft (9.5 x 7.5 m) Xtreme Duty Airless Hose 1/4 in x 10 ft (6.4 mm x 3 m) Xtreme Duty Whip Hose | 3/8 in x 25 ft (9.5 x 7.5 m) Xtreme Duty Airless Hose 1/4 in x 10 ft (6.4 mm x 3 m) Xtreme Duty Whip Hose | 3/8 in x 25 ft (9.5 x 7.5 m) Xtreme Duty Airless Hose 1/4 in x 10 ft (6.4 mm x 3 m) Xtreme Duty Whip Hose | 3/8 in x 25 ft (9.5 x 7.5 m) Xtreme Duty Airless Hose 1/4 in x 10 ft (6.4 mm x 3 m) Xtreme Duty Whip Hose |
| APPROVALS | Haz-Loc Approved | Haz-Loc Approved | Haz-Loc Components | Haz-Loc Components | Haz-Loc Components | Haz-Loc Components |

| MODEL | ELECTRIC HEATED HOSE: xxxM0E | WATER JACKETED HOSE: xxxH0W | W/25 GALLON HOPPERS: xxxM2E | W/25 GALLON HOPPERS: xxxH2W |
|----------------|---|---|---|---|
| MIX MANIFOLD | Remote Carriage Included | Remote Carriage Included | Remote Carriage Included | Remote Carriage Included |
| PRIMARY HEATER | Viscon HF | Viscon HF | Viscon HF | Viscon HF |
| SOLVENT PUMP | 30:1 Merkur | 30:1 Merkur | 30:1 Merkur | 30:1 Merkur |
| JUNCTION BOX | Included | Included | Included | Included |
| HEATED HOSE | Electric Controller | Water Jacketed | Electric Controller | Water Jacketed |
| GUN | XTR+ | XTR+ | XTR+ | XTR+ |
| HOSE | 3/8 in x 25 ft (9.5 x 7.5 m) Xtreme Duty Airless Hose 1/4 in x 10 ft (6.4 mm x 3 m) Xtreme Duty Whip Hose | 3/8 in x 25 ft (9.5 x 7.5 m) Xtreme Duty Airless Hose 1/4 in x 10 ft (6.4 mm x 3 m) Xtreme Duty Whip Hose | 3/8 in x 25 ft (9.5 x 7.5 m) Xtreme Duty Airless Hose 1/4 in x 10 ft (6.4 mm x 3 m) Xtreme Duty Whip Hose | 3/8 in x 25 ft (9.5 x 7.5 m) Xtreme Duty Airless Hose 1/4 in x 10 ft (6.4 mm x 3 m) Xtreme Duty Whip Hose |
| APPROVALS | Ordinary Location | Ordinary Location | Ordinary Location | Ordinary Location |



SPRAY WITH CONFIDENCE

Industry-Leading Warranty Protection

Every Graco electric is backed by the industry's best warranty coverage.

WARRANTY

Graco warrants all equipment manufactured by Graco and bearing its name to be free from defects in material and workmanship on the date of sale by an authorized Graco distributor to the original purchaser for use. With the exception of any special, extended, or limited warranty published by Graco, Graco will, for a period of twelve (12) months from the date of sale, repair or replace any part of the equipment determined by Graco to be defective. This warranty applies only when the equipment is installed, operated and maintained in accordance with Graco's written recommendations.

This warranty does not cover, and Graco shall not be liable for general wear and tear, or any malfunction, damage, or wear caused by faulty installation, misapplication, abrasion, corrosion, inadequate or improper maintenance, negligence, accident, tampering, or substitution of non-Graco component parts. Nor shall Graco be liable for malfunction, damage or wear caused by the incompatibility of Graco equipment with structures, accessories, equipment or materials not supplied by Graco, or the improper design, manufacture, installation, operation or maintenance of structures, accessories, equipment or materials not supplied by Graco.



FINISH EVERY JOB, EVERY TIME

Downtime is costly. With the Endurance Advantage Program, you'll never need to worry about it again. Depending on the sprayer you purchase:

Receive up to 70% OFF the list price of an Endurance Pump
OR — Receive a FREE Repair Kit if you'd rather repack your own pump.



Every Graco purchase comes with A+ Customer Service.

Questions?
Call (844)241-9499

For more information visit graco.com/contractor