



CONTRACTOR POWERSHOT™ GUNS

Introducing the Industry's Only
Electric-Powered Airless Guns



PROVEN QUALITY. LEADING TECHNOLOGY.



MADE IN THE USA WITH
GLOBAL COMPONENTS



**QUICKSHOT™
CHANGED THE GAME**

**YOU ASKED AND WE DELIVERED!
WE'VE EXPANDED ELECTRIC-POWERED GUN
TECHNOLOGY BY POPULAR DEMAND!**



**FOR EVERY
AIRLESS PAINT
SPRAYER**

**FOR EVERY
PAINTING AND
FINISHING
APPLICATION**



*New Residential
and Repaint*



*Maintenance and
Remodeling*



*Finishing and
Refinishing*



*Commercial and
Multifamily*



CONTRACTOR POWERSHOT™

PATENT PENDING

INTRODUCING THE INDUSTRY'S ONLY ELECTRIC-POWERED AIRLESS GUNS



CONTRACTOR POWERSHOT STANDARD

ELECTRIC-POWERED GUN VIRTUALLY ELIMINATES SPITS

• Instant-Response trigger actuates 80X faster than traditional guns

INDUSTRY'S LIGHTEST TRIGGER PULL FORCE

• All day comfort with 80% less force on each trigger pull

LIGHTEST AIRLESS GUN EVER BUILT FASTEST SERVICE ON THE JOBSITE



OPERATES WITH **EVERY** AIRLESS SPRAYER

CONNECT TO XT SPRAYERS TO UNLOCK A NEW LEVEL OF PERFORMANCE



CONTRACTOR POWERSHOT **XT**™

INCLUDES ALL FEATURES OF THE CONTRACTOR POWERSHOT STANDARD

PLUS

INSTANT GUN-TO-SPRAYER COMMUNICATION

REMOTELY ADJUST PRESSURE AT THE GUN

SMARTSTALL™ ELIMINATES MATERIAL BLAST



CONNECTS **EXCLUSIVELY** WITH XT AIRLESS PAINT SPRAYERS

CONTRACTOR POWERSHOT STANDARD PATENT PENDING

REVOLUTIONARY AIRLESS GUN PERFORMANCE

Breakthrough airless gun technology designed to deliver the best airless finish, reduce user fatigue and increase your production rate.

ELECTRIC-POWERED GUN VIRTUALLY ELIMINATES SPITS

Instant-Response Trigger

- Deliver a Perfect Airless Finish by virtually eliminating spits with the industry's fastest trigger speed—80X faster than traditional guns

SPRAY LONGER WITH GREATER COMFORT

Reduced Fatigue

- The world's lightest gun ever built — Only 1.1 lbs (0.49 kg) in-hand weight
- Industry's lightest trigger pull force — Only 0.8 lbs (0.36 kg) at any spray pressure
- Allowing you to spray all day long with ease

FIRST EVER AIRLESS GUN DESIGNED FOR EASY HOSE MANAGEMENT

Flexible Whip Hose

- Gun whip hose provides superior spray control and reduces fatigue — 1/8 in x 6 ft (0.3 cm x 1.8 m)
- PowerPak™ whip hose & swivel delivers easy tangle free hose management — 1/8 in x 1.5 ft (0.3 cm x 45 cm)

ALL DAY SPRAYING POWER & CONVENIENCE

PowerPak System

- Spray all day long on a single battery charge
- Ergonomic in-line handle provides contractors a comfortable handle to hold
- Easy Out™ gun filter keeps debris out of your coating

RAC X™ LP® 517 SwichTip™ and Guard

- Delivers Perfect Airless Finish™ at 50% less pressure resulting in up to 2X longer tip life



OPERATES WITH EVERY
AIRLESS PAINT SPRAYER
READY TO ATTACH OUT OF THE BOX!

SEE IT IN ACTION
graco.com/PowerShot



HANDS-FREE HOSE MANAGEMENT

PowerPak Belt & Holster

- Quickly attach the PowerPak system for hands-free hose management

EASY OUT GUN FILTER



FASTEST SERVICE ON THE JOBSITE

- Rebuild your gun in seconds with the ProConnect® replacement cartridge



Contractor PowerShot Standard



SPRAY ALL DAY ON A SINGLE CHARGE

EVERY GUN COMES PRE ASSEMBLED AND INCLUDES:



- ✓ PowerPak System
- ✓ Gun Whip Hose: 1/8 in x 6 ft (0.3 cm x 1.8 m)
- ✓ PowerPak Whip Hose: 1/8 in x 1.5 ft (0.3 cm x 45 cm)
- ✓ EasyGlide™ Swivel
- ✓ RAC X™ LP 517 Reversible SwitchTip & guard
- ✓ 60 Mesh Easy Out Gun Filter
- ✓ PowerShot Belt & Holster
- ✓ (2) DEWALT® 18V Compact Lithium-ion batteries and a charger

CONTRACTOR POWERSHOT XT™



CONNECTS **EXCLUSIVELY**
WITH **XT** SPRAYERS



INCLUDES ALL FEATURES FOUND ON
CONTRACTOR POWERSHOT STANDARD

PLUS INSTANT GUN-TO-SPRAYER
COMMUNICATION



REMOTELY ADJUST PRESSURE AT THE GUN

SMARTSTALL™ ELIMINATES MATERIAL
BLAST & KICKBACK AT TRIGGER PULL



Contractor PowerShot XT

SPRAY ALL
DAY ON A
SINGLE CHARGE

SEE IT IN ACTION
graco.com/PowerShot



REMOTELY ADJUST PRESSURE AT THE GUN

- Quickly adjust your pressure from anywhere up to 200 feet (60 m) away
- Adjust your spray pressure by increments of 25 psi (.7 bar) in Low Pressure Mode or 50 psi (3.4 bar) in High Pressure Mode



**ADJUST YOUR
PRESSURE EVEN
FROM A LIFT**

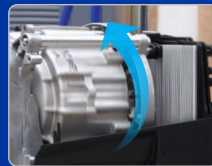
AUTOMATICALLY ELIMINATE MATERIAL BLAST AND GUN KICK BACK ON EACH TRIGGER PULL

- Provides most consistent stall and running pressure for the Perfect Airless Finish
- Spray at the industries lowest pressures — eliminate material blast on each trigger pull

INSTANTLY STARTS AND STOPS THE MOTOR WITH EACH TRIGGER PULL



1. Pull the trigger to
START THE MOTOR



2. Release the trigger to
STOP THE MOTOR



EVERY GUN COMES PRE ASSEMBLED AND INCLUDES:



- ✓ PowerPak System
- ✓ Gun Whip Hose: 1/8 in x 6 ft (0.3 cm x 1.8 m)
- ✓ PowerPak Whip Hose: 1/8 in x 1.5 ft (0.3 cm x 45 cm)
- ✓ EasyGlide Swivel
- ✓ RAC X LP 517 Reversible SwitchTip & guard
- ✓ 60 Mesh Easy Out Gun Filter
- ✓ PowerShot Belt & Holster
- ✓ (2) DEWALT 18V Compact Lithium-ion batteries and a charger

SMART DISPLAY XT™

PATENT PENDING

EASILY UNLOCK THE BENEFITS OF THE POWERSHOT XT WITH SMARTDISPLAY XT

INSTANT GUN-TO-SPRAY COMMUNICATION

- Remotely adjust your spray pressure right from the gun from anywhere up to 200 feet (60 m) away
- Eliminate pressure surge and gun kickback on each trigger pull



SmartDisplay XT

BLUELINK® JOBSITE MANAGEMENT

- Track every sprayer — exact location and hourly productivity
- Know job progress — on-demand productivity, facts and reporting from anywhere



CONNECTS POWERSHOT XT EXCLUSIVELY WITH XT SPRAYERS



490 XT-1095 XT Standard Series

Requires Purchase of SmartDisplay XT to Connect with sprayer

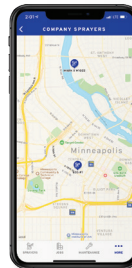


695 XT-1095 XT ProContractor Series

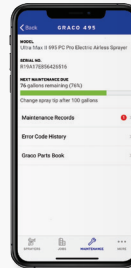
SmartDisplay XT Included



Know Job Progress



Locate Every Sprayer



Maximize Uptime

STAY IN CONTROL WITH BLUELINK

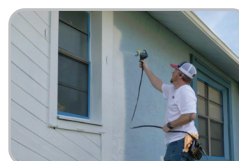
- Free to use — no monthly fees
- Select from 13 languages



1. Install SmartDisplay XT in seconds



2. Pair gun to sprayer with a push of a button



3. Experience airless like never before

CONNECTING IS AS EASY AS 1-2-3:

CONTRACTOR POWERSHOT AIRLESS GUNS

Description	Contractor PowerShot Standard	Contractor PowerShot XT
Maximum Tip Size	0.039"	0.039"
Maximum psi (bar)	3300 (227)	3300 (227)
In-Hand Weight lbs (kg)	1.1 (0.49)	1.1 (0.49)
Trigger Pull Force lbs (kg)	0.8 (0.36)	0.8 (0.36)



Compatible Airless Sprayers	Every Airless Sprayer	Graco XT Sprayers
PowerPak System	PowerPak Standard	PowerPak XT
Electric-Powered Gun	✓	✓
Virtually Eliminates Spits	✓	✓
Remote Pressure Adjustment		✓
SmartStall		✓



RAC X LOW PRESSURE SWITCHTIPS (LPxxx)

(Neon Handle)		Orifice Size - Inches										
Fan Width	in	(mm)	.013	.015	.017	.019	.021	.023	.025	.027	.029	.031
	4-6	(102-152)		217								
6-8	(152-203)	313	315	317	319							
8-10	(203-254)		415	417	419	421	423	425				
10-12	(254-305)		515	517	519	521	523	525	527			
12-14	(305-356)			617	619	621	623	625	627		629	631
14-16	(356-406)						723	725		729	731	
Flow rate (gpm)*			.18	.24	.31	.38	.47	.57	.67	.77	.90	1.03
Flow rate (lpm)*			.69	.91	1.17	1.47	1.79	2.15	2.54	2.96	3.42	3.90
Recommended filter size			100	60	60	60	60	60	60	60	60	30

Note: Lowering spray pressure can reduce flow in some materials. Increase tip orifice size to maintain speed and material flow if needed.



RAC X FINE FINISH LOW PRESSURE SWITCHTIPS (FFLPxxx)

(Green Handle)		Orifice Size - Inches							
Fan Width	in	(mm)	.006	.008	.010	.012	.014	.016	
	2-4	(51-102)	106	108	110	112			
4-6	(102-152)	206	208	210	212	214			
6-8	(152-203)		308	310	312	314			
8-10	(203-254)		408	410	412	414			
10-12	(254-305)			510	512	514	516		
Flow Rate (gpm)*			.04	.07	.11	.15	.21	.27	
Flow Rate (lpm)*			.15	.26	.41	.59	.80	1.04	
Recommended filter size			200	200	200	200	100	60	



RAC X WIDERAC™ LOW PRESSURE SWITCHTIPS (WRLPxxxx)

(Neon Handle)		Orifice Size - Inches							
Fan Width	in	(mm)	.021	.023	.025	.027	.029	.031	.033
	24	(610)	1221	1223	1225	1227	1229	1231	1233
Flow rate (gpm)*			.47	.57	.67	.77	.90	1.03	1.17
Flow rate (lpm)*			1.79	2.15	2.54	2.96	3.42	3.90	4.42
Recommended filter size			60	60	60	60	60	30	30

* Water @ 2000 psi, 138 bar, 13.8 MPa—paints with a higher viscosity will decrease the flow rate. Example: for a tip with a .027 orifice and a 24 in (305 mm) pattern, order WRLP1227.

WideRac Low Pressure Conversion Chart	
Traditional Tip Size	WRLP Tip Size
414 or 515	1221 or 1223
417 or 517	1223 or 1225
419 or 519	1225 or 1227
421 or 621	1229 or 1231
523 or 623	1233 or 1235
525 or 625	1235 or 1237

ACCESSORIES

Part number	Replacement Parts
2006609	PowerShot Material Supply Whip Hose 1/8 in x 1.5 ft (0.3 cm x 45 m)
2006608	PowerShot Gun Whip Hose 1/8 in x 6 ft (0.3 cm x 1.8 m)
2005788	PowerShot ProConnect Cartridge
20B432	SmartDisplay XT Modular Accessory
18F891	Replacement Belt
2006715	PowerShot Holster

Part Number	Contractor Easy Out Gun Filters
287032	60 Mesh Gun Filter (Black)
287033	100 Mesh Gun Filter (Blue)
257130	200 Mesh Gun Filter (Red)





ABOUT GRACO

PROVEN QUALITY. LEADING TECHNOLOGY.

Founded in 1926, Graco is a world leader in fluid handling systems and components. Graco products move, measure, control, dispense and apply a wide range of fluids and viscous materials used in vehicle lubrication, commercial and industrial settings.

The company's success is based on its unwavering commitment to technical excellence, world-class manufacturing and unparalleled customer service. Working closely with qualified distributors, Graco offers systems, products and technology that set the quality standard in a wide range of fluid handling solutions. Graco provides equipment for spray finishing, protective coating, paint circulation, lubrication, and dispensing sealants and adhesives, along with power application equipment for the contractor industry. Graco's ongoing investment in fluid management and control will continue to provide innovative solutions to a diverse global market.

GRACO LOCATIONS

MAILING ADDRESS

P.O. Box 1441
Minneapolis, MN 55440-1441
Tel: +612-623-6000
Fax: +612-623-6777

AMERICAS

MINNESOTA
Worldwide Headquarters
Graco Inc.
88-11th Avenue N.E.
Minneapolis, MN 55413

EUROPE

BELGIUM
European Headquarters
Graco N.V.
Industrieterrein-Oude Bunders
Slakweidestraat 31
3630 Maasmechelen,
Belgium
Tel: +32 89 770 700
Fax: +32 89 770 777

ASIA PACIFIC

AUSTRALIA
Graco Australia Pty Ltd.
Suite 17, 2 Enterprise Drive
Bundoora, Victoria 3083
Australia
Tel: +61 3 9468 8500
Fax: +61 3 9468 8599

CHINA (AP Headquarters)
Graco Fluid Equipment
(Shanghai) Co., Ltd
Building 7, NO. 1 - 2, Wenshui
Road 299
Jing'an District, Shanghai
200436, P.R.China
Tel: +86 512 6260 5711
Fax: +86 21 6495 0077

INDIA

Graco India Pvt Ltd
Plot No 295, Udyog Vihar Phase-IV
Gurugram - 122015 (Haryana)
India
Phone: +91 124 661 0200
Fax: +91 124 661 0201

JAPAN
Graco K.K.
1-27-12 Hayabuchi
Tsuzuki-ku
Yokohama City, Japan 2240025
Tel: +81 45 593 7300
Fax: +81 45 593 7301

KOREA
Graco Korea Inc.
38, Samsung 1-ro 1-gil,
Hwaseong-si, Gyeonggi-do.
18449
Republic of Korea
Tel : +82 31 8015 0961
Fax : +82 31 613 9801

SALES/ DISTRIBUTION/ SERVICE

Call today for product information or to request a demonstration.

CHINA/SOUTH EAST ASIA: + 86 512 62605711

INDIA: +91 124 6610200

AUSTRALIA and NEW ZEALAND: +61 3 9468 8500

Or visit us at www.graco.com