



ELECTRIC SPRAYERS

Graco's Complete Line of Professional
Electric Airless Sprayers



PROVEN QUALITY. LEADING TECHNOLOGY.



THERE IS NOTHING LIKE A GRACO ELECTRIC SPRAYER

Experienced contractors know the difference. Graco professional electric sprayers are solid investments that perform reliably, year after year.

TRUST YOUR BUSINESS AND REPUTATION TO GRACO

Graco is committed to providing the highest quality electric airless sprayers available, backed by the industry's best warranty.

AMERICAN BUILT QUALITY SINCE 1926

100% factory-tested and field-proven Graco professional electric sprayers are manufactured, assembled and supported in the USA.

INDUSTRY-LEADING WARRANTY

Behind every Graco sprayer is the industry's strongest warranty. You may never use Graco's warranty — but if you do, we will be there.



GRACO-ONLY SOLUTIONS THAT KEEP YOU SPRAYING



PATENTED

THE LONGEST LASTING PUMPS EVER BUILT

- Longest life in the industry with Vortex™ rotating piston rod
- 6X more gallons sprayed between repacks
- Extends pump rod life by 3X — delivering the industry's lowest cost of ownership



PATENTED

STREAMLINE YOUR BUSINESS WITH BLUELINK™

- Track every sprayer — exact location and hourly productivity
- Know job progress — on-demand productivity facts and reporting from anywhere
- Maximize uptime — set maintenance schedules, alerts, and jobsite notes



PATENTED

THE EASIEST MAINTENANCE

- Swap your pump in minutes with no tools
- Eliminate costly jobsite downtime
- Easier and faster than ever to service your sprayer



PATENTED

RAC X™ LOW PRESSURE SWITCHTIPS™

- Atomize architectural coatings at the industry's lowest airless spray pressure
- Up to 50% less overspray — reducing material waste and prep and cleanup time
- 2X longer tip life — longest life!
- Easiest pattern overlap and perfect airless finish



GRACO EXCLUSIVE

PRECISION SPRAYING CONTROL

- Precision pressure control that delivers a consistent spray fan without pressure fluctuations
- Ideal for Low Pressure tips commonly used for fine finish work and low overspray applications
- Monitors sprayer gallons, hours, and spray pressure



PATENT PENDING

EXCLUSIVE BREAKTHROUGH CORDLESS TECHNOLOGY

- Highest performance cordless sprayer ever built
- Spray up to 6 gallons before charging. Includes 2 DEWALT® FlexVolt® batteries for all day spraying.
- Expanded application capability with freedom from power cords, outlets and generators



BREAKTHROUGH ENDURANCE™ VORTEX MAXLIFE® AND MAXLIFE EXTREME™ TECHNOLOGY

THE LONGEST LASTING PUMPS EVER BUILT



Endurance Chromex™ Pump
Lasts 2X longer than competing pumps



Endurance Vortex MaxLife Pump
6X longer between repacks



Endurance Vortex MaxLife Extreme Pump
Extends pump rod life by 3X — delivering the industry's lowest cost of ownership



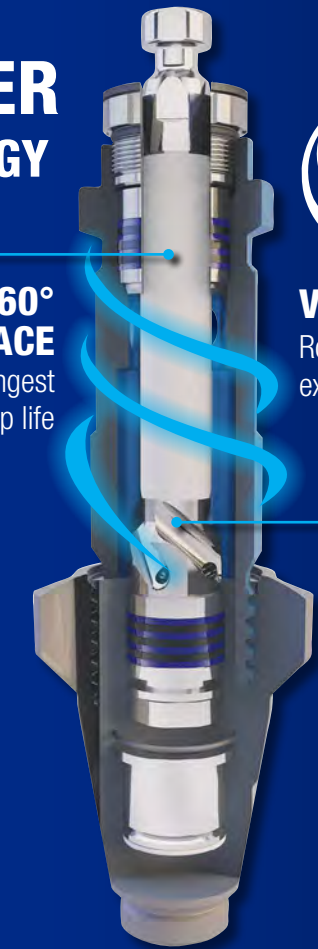
THE BEST JUST GOT BETTER VORTEX ROTATING PISTON TECHNOLOGY KEEPS YOU SPRAYING

PATENT PENDING
Built with Graco exclusive EXTREME ROD that is an abrasion-resistant composite to deliver the most durable, hardest wear surface possible

6X more gallons sprayed between repacks — Extreme Composite extends pump rod life by 3X, delivering the industry's lowest cost of ownership



360° WEAR SURFACE
Delivers the longest pump life



VORTEX TECHNOLOGY
Rotating rod for extended life

HELICAL DESIGN
Delivers high-velocity flow to rotate pump rod as you spray

SPRAYS THE WIDEST RANGE OF COATINGS

- Oversized clearances for maximum performance
- Maximum flow with heavy materials

EASIEST SERVICE IN THE INDUSTRY

QuikPak™ Cartridge System

- Repack the entire pump in minutes

ProConnect™ 2 Pump Replacement

- Complete no-tools pump replacement system

QuikAccess™ Intake Foot Valve

- Clear debris faster with easy inlet ball access

OLD WAY



VS



NEW WAY

Modular pre-oiled cartridge packings install correctly every time

QUIKPAK CARTRIDGE REPAIR SYSTEM

PATENT PENDING

REPACK YOUR PUMP IN MINUTES



1) Insert pre-oiled packing cartridge assembly



2) Remove disposable clip



3) Assemble pump

STAY IN CONTROL WITH BLUELINK

BlueLink connects the people and equipment that drive your business in a completely new way. Whether on the jobsite, at the office, or anywhere in between, BlueLink provides the critical information you need every day — including real-time jobsite access, instant maintenance alerts, on-demand productivity reports and much more!

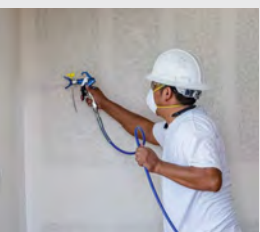


HOW IT WORKS:



1

DATA IS STORED ON YOUR SPRAYER



2

AUTOMATICALLY UPDATES EACH TIME YOUR EMPLOYEES ARE NEAR THE SPRAYER



3

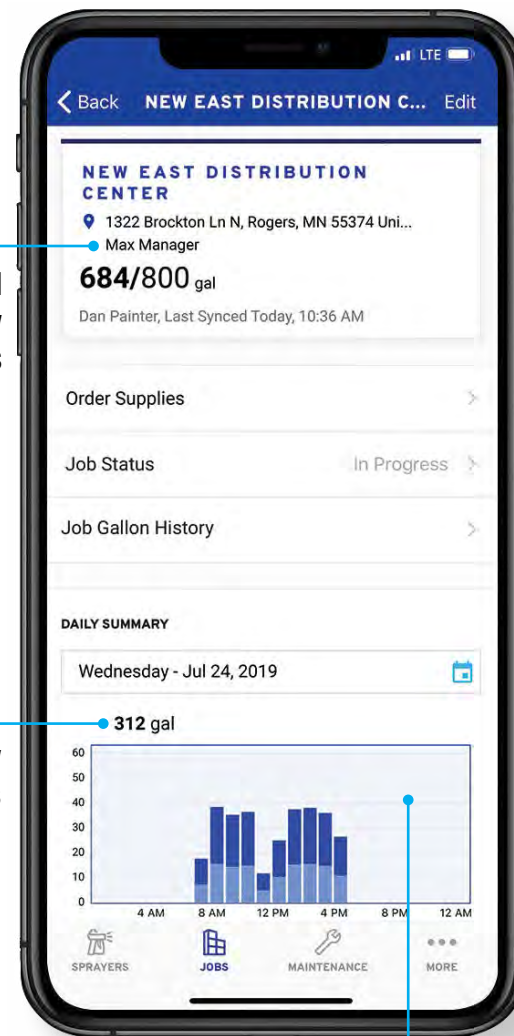
EXPERIENCE PROFIT DRIVING RESULTS THROUGH BETTER JOB MANAGEMENT

- FREE TO USE — NO MONTHLY FEES
- INCLUDED ON ALL ULTIMATE MX II 695-1595 MODELS
- SELECT FROM 13 LANGUAGES



NOW CONNECT BLUELINK WITH THE SHERWIN-WILLIAMS PRO+ APP

Pro Advantages with the ability to check inventory, see your price, and order supplies

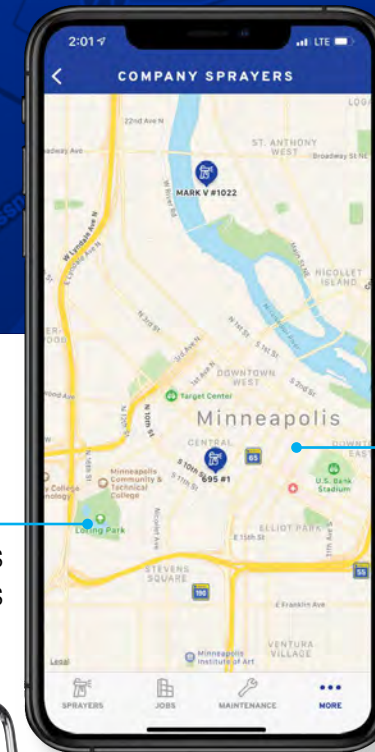


Compare bid accuracy—know productivity facts from anywhere!

Manage your crew and their supplies

KNOW JOB PROGRESS

Monitor hourly productivity to ensure job is on-time with the needed materials



Make fewer trips to jobsites

LOCATE EVERY SPRAYER

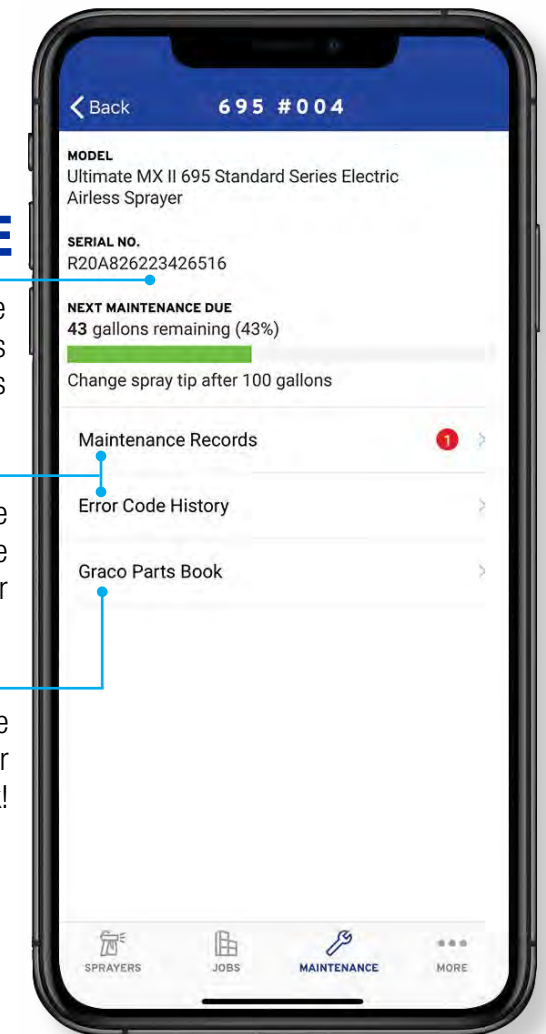
Know exact locations of your sprayers and hourly productivity

MAXIMIZE UPTIME

Monitor preventative maintenance schedules and receive alerts

Access to complete historical maintenance records on every sprayer

Easily look up service parts on your sprayer with Graco PartsBook!



GET STARTED TODAY

Get BlueLink working for your business today. Download the BlueLink app now!



CHOOSE THE RIGHT ELECTRIC SPRAYER

Our mission is to fit you to the sprayer that is sized for the work you do to get the job done right, every time.

CURRENT AND FUTURE JOBSITE FACTS TO CONSIDER WHEN SELECTING YOUR GRACO ELECTRIC SPRAYER:

- How many gallons per week will you spray?
- What hose lengths will you use?
- How many guns will you use? What tip sizes?
- What types of materials will you spray?
- What types of jobs will you bid?
- What power source do you have available?



FIND THE SPRAYER THAT FITS

| | RECOMMENDED SPRAYER | Ultimate MX II 490 PC Pro Ultimate MX II 495 PC Pro Ultimate MX II 595 PC Pro Ultimate MX II 650 PC Pro | STANDARD | PROCONTRACTOR™ | STANDARD | PROCONTRACTOR | IRONMAN |
|------------------|---|--|--|---|----------|---------------|---------|
| | | | Ultimate MX II 695 Ultimate MX II 795 | Ultimate MX II 1095 Ultimate MX II 1595 | | | |
| PRODUCTION NEEDS | LOW Up to 50 gallons per week | MEDIUM 50-100 gallons per week | HIGH 100-200 gallons per week | HIGH Over 200 gallons per week | | | |
| | LOW / MEDIUM Up to 200 ft of hose | LOW / MEDIUM Up to 200 ft of hose | HIGH Up to 300 ft of hose | HIGH Up to 300 ft of hose | | | |
| | LOW 1 gun Up to 0.023 tip / Up to 0.54 gpm | MEDIUM 2 guns Up to 0.029 tip / Up to 0.80 gpm | HIGH Up to 2 guns Up to 0.033 tip / Up to 1.10 gpm | HIGHEST Up to 3 guns Up to 0.039 tip / Up to 1.35 gpm | | | |
| JOB TYPES | LIGHT Small Residential, Repaint/ Remodel, Property Maintenance | LIGHT / MEDIUM Medium Residential, Repaint/Remodel, Property Maintenance, Light Commercial | LIGHT / HEAVY Interior/Exterior, Residential, Light Commercial | HEAVY DUTY Exterior Residential, Heavy Commercial, Industrial | | | |
| MATERIALS | LIGHT Lacquers and Stains, Interior/Exterior Latex, Enamels, Acrylics | LIGHT / MEDIUM Lacquers and Stains, Interior/ Exterior Latex, Enamels, Acrylics, Oil-Based Primers | LIGHT / HEAVY Interior/Exterior Latex, Oil-Based Primers, Acrylics, Block Fillers | HEAVY DUTY Interior/Exterior Latex, Oil-Based Primers, Epoxies, Block Fillers, Dryfall, Elastomerics | | | |
| POWER SOURCE | Select Models available in Corded & Cordless | Corded | Corded | Corded | | | |

SMALL ELECTRIC SPRAYERS

SMALL SIZE, LARGE CAPABILITY— NOW AVAILABLE IN CORDED OR CORDLESS

Proven power and performance in a highly portable configuration that delivers legendary Graco reliability to make sure you always get the job done faster and easier.



NOVA 390 PC CORDED FEATURES:



DURABLE ENDURANCE PUMP

- Lasts 2X longer than competing pumps
- Long life V-Max Blue™ Packings, Chromex rod, and hardened stainless steel cylinder
- Faster cleaning with the QuikAccess intake valve

EASY MAINTENANCE AND LESS CLOGGING

Easy Out™ Pump Filter

- Exclusive inside-out filtering process ensures a quality finish
- Large filtration area reduces tip clogs

ELIMINATE COSTLY DOWNTIME

ProConnect One-Part Pump Replacement System

- Pump swaps in minutes — no tools, pins, or parts to lose

THE LONGEST LASTING DRIVE

Advantage Drive™

- Hardened steel gears provide extremely quiet operation and a lifetime warranty

NEW! RAC X LP SWITCHTIP

- Up to 50% less overspray
- Perfect Airless Finish™
- Up to 2X tip life



NOVA 390 PC Corded Stand 826195

ULTIMATE NOVA 395 PC INCLUDES ALL FEATURES FROM THE NOVA 390 PC CORDED PLUS:

GET MORE WORK DONE

Durable TEFC DC Motor

High torque produces the most power possible for all painting applications

EVEN PRESSURE DELIVERY

SmartControl™

- Constantly monitors performance and adjusts motor speed to match your tip size and spraying needs
- Ideal for RAC X™ Low Pressure Spray Tips that deliver less overspray, softer edges and longer tip life

ALL-DAY COMFORT AND CONTROL

New Contractor PC™ Spray Gun

- Lightest weight gun in its class
- Up to 50% lighter trigger pull force
- E-Z Fit™ adjustable trigger length
- Complete no-tools gun rebuild in seconds with ProConnect

RAC X LP SWITCHTIP

- Up to 50% less overspray
- Perfect Airless Finish
- Up to 2X tip life



Ultimate NOVA 395 PC Stand 826237



THE MOST POWERFUL CORDLESS SPRAYER EVER BUILT DELIVERS THE FREEDOM TO SPRAY EVERY JOB FASTER

NOVA 390 PC CORDLESS INCLUDES ALL NOVA 390 PC CORDED FEATURES PLUS:

ULTIMATE POWER AND PORTABILITY

Powered By DeWALT

- High capacity 6ah FlexVolt batteries — spray up to 6 gallons before charging
- Delivered complete with two batteries
- Fan-cooled fast charger—recharges battery in under 60 minutes

PROVEN PERFORMANCE AND EXTENDED BATTERY LIFE

Brushless DC Motor

- Powerful brushless DC motor provides extended battery run time
- Lightweight, compact design allows for increased portability
- Lightest professional electric sprayer on the market



NOVA 390 PC Cordless Stand 826280

YOU CHOOSE YOUR POWER SOURCE!

- ✓ BOTH Deliver Superior Performance
- ✓ BOTH Spray the Widest Range of Architectural Coatings



NOVA 390 PC Corded

NOVA 390 PC CORDLESS

| SMALL ELECTRIC MODELS | MAX TIP SIZE | MAX GPM | STAND | HI-BOY | LO-BOY |
|-----------------------------|--------------|---------|--------|--------|--------|
| NOVA 390 PC Corded | .021 | .47 | 826195 | 17C313 | — |
| NOVA 390 PC Cordless | .021 | .47 | 826280 | 25T805 | — |
| Ultimate NOVA 395 PC Corded | .023 | .54 | 826237 | 826239 | 826238 |

FINISH EVERY JOB, EVERY DAY

Graco Endurance pumps deliver the industry's longest life and will require occasional service. Quickly changing a pump on the job can guarantee a productive day of spraying. Graco ProConnect makes pump swaps fast and easy.



1) Loosen the clamping nut



2) Open door and remove pump



3) Remove hose and suction tube

FAST PUMP REMOVAL

- 1-minute jobsite replacement
- Keeps you spraying instead of waiting for service
- No pins or parts to lose!



GRACO KEEPS YOU ON THE JOB SPRAYING!

From the longest life Endurance Pump or the Express Pump for lighter use, Graco's Pump Replacement System is the only one-part pump replacement solution on the market today. Eliminate downtime—pick up a spare today!

DEMAND GENUINE GRACO PARTS FOR THE LONGEST LIFE. ACCEPT NO SUBSTITUTES.

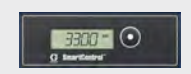
MIDSIZE ELECTRIC SPRAYERS

INCREASED PRODUCTIVITY — UNMATCHED RELIABILITY

Graco's midsize electric airless sprayers make it easier to get more work done in a day with increased flow and production rates.

THE LIGHTEST WEIGHT 2-GUN ELECTRIC AIRLESS SPRAYER

ULTIMATE MX II 490-595 PC PRO MODELS:



INCREASED SPRAY CONSISTENCY

SmartControl with Digital Display

- Even pressure delivery on every job
- Constantly monitors performance and adjusts motor speed to match your tip size and spraying needs



ALL-DAY COMFORT AND CONTROL

Contractor PC Spray Gun

- Lightest weight gun in its class
- Up to 50% lighter trigger pull force

NEW! RAC X LP SWITCHTIP

- Up to 50% less overspray
- Perfect Airless Finish
- Up to 2X tip life

THE LONGEST LASTING DRIVE

Advantage Drive™

- Hardened steel gears provide extremely quiet operation and a lifetime warranty

GET MORE WORK DONE

MaxPower™ Motor and Advantage drive

- Creates more torque and delivers maintenance-free performance

FastFlush™ High-Flow Cleaning System

- 4X faster cleaning with 1/2 the water

DURABLE ENDURANCE PUMP

- Lasts 2X longer than competing pumps
- Long life V-Max Blue™ Packings, Chromex rod, and hardened stainless steel cylinder
- Faster cleaning with the QuikAccess intake valve

EASY MAINTENANCE AND LESS CLOGGING

Easy Out™ Pump Filter

- Exclusive inside-out filtering process ensures a quality finish
- Large filtration area reduces tip clog

ELIMINATE COSTLY DOWNTIME

ProConnect One-Part Pump Replacement System

- Pump swaps in minutes — no tools, pins, or parts to lose

EASY TRANSPORT

- Only 34 lbs (Stand model)
- Kickstand for easy one-person bucket changes (Hi-Boy only)



Ready to Spray: Complete with Contractor PC Spray Gun, 50 ft FlexPro™ hose, and RAC X LP 517 SwitchTip

Ultimate MX II 490 PC Pro Stand 826243



Ultimate MX II 650 PC Pro Hi-Boy 826258

ULTIMATE MX II 650 PC PRO:

INCLUDES ALL FEATURES FOUND ON 490-595 PC PRO MODELS,

PLUS

DURABLE ENDURANCE PUMP

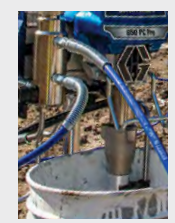
Endurance Piston Pump

- Lasts 2X longer than competing pumps
- Chromex piston rod with longer stroke
- Chrome plated stainless steel sleeve
- V-Max Blue™ packings

- Larger intake to handle heavier coatings

ProConnect

- Eliminate downtime with fast and easy on-the-job repair



2-GUN CAPABILITY

2-Hose Connection Manifold

- Supports up to .019" tips
- EasyOut filter provides easy maintenance and less clogging

EASY TRANSPORT AND MANEUVERING

Small Compact Frame

- Balanced design
- Chrome over steel construction withstands jobsite abuse
- Lightest-2 gun sprayer on market — only 77 lbs (Hi-Boy model)

UPGRADE FOR A LOWER COST OF OWNERSHIP

Ready to Spray: Complete with Contractor PC Spray Gun, 50 ft FlexPro Hose, and RAC X LP 517 SwitchTip

| MIDSIZE ELECTRIC MODELS | MAX TIP SIZE | MAX GPM | STAND | HI-BOY | LO-BOY |
|---------------------------|--------------|---------|--------|--------|--------|
| Ultimate MX II 490 PC Pro | .023 | .54 | 826243 | 826245 | 826244 |
| Ultimate MX II 495 PC Pro | .025 | .60 | 826246 | 826248 | 826247 |
| Ultimate MX II 595 PC Pro | .027 | .70 | | 826250 | 826249 |

| MIDSIZE ELECTRIC MODELS | MAX TIP SIZE | MAX GPM | HI-BOY | LO-BOY |
|---------------------------|--------------|---------|--------|--------|
| Ultimate MX II 650 PC Pro | .029 in | .80 | 826258 | 826259 |

CHOOSE THE RIGHT SERIES FOR ALL YOUR APPLICATIONS

Graco's large electric sprayers deliver the highest production rates to handle the most demanding jobs and applications.

Choose the Right Series of Large Electric Sprayers for Your Business

Only Graco is committed to professional painting contractors by offering three different series of large electric airless sprayers.



EVERYDAY RELIABILITY

Small Residential and Repainting Contractor

- Painting multiple days a week
- Typically working on smaller jobs
- Don't need a lot of extra features



WORK SMARTER, FINISH MORE JOBS

Large Residential and Commercial Contractor

- Painting every day—frequently from job to job
- Tackling medium to large projects
- Requiring features to get you to the next jobsite faster



BEYOND JOBSITE TOUGH

Large Commercial and Industrial Contractor

- Painting continuously in less-than-ideal conditions
- Working on long-duration projects with large material volumes
- Require extreme durability and reliability



Ultimate MX II 695 Standard Series
826223

Ready to Spray: Complete with Contractor PC Spray Gun, 50 ft FlexPro hose, and RAC X SwitchTip



STANDARD SERIES EVERYDAY RELIABILITY

Larger painting jobs demand the proven quality and performance of Graco's Standard Series large electric sprayers to deliver a job well done, every time.

DURABLE ENDURANCE PUMP

Endurance Chromex Piston Pump

- Lasts 2X longer than competing pumps
- Repack the pump in minutes with the new QuikPak Cartridge System
- Faster cleaning with the QuikAccess intake foot valve

PRECISION PRESSURE CONTROL

New SmartControl with ProGuard™ Protection System

- Lowest dead band at any pressure delivers a consistent spray fan without pressure fluctuation
- ProGuard prevents electrical damage from extreme jobsite power conditions
- WatchDog™ Pump Protection System automatically prevents pump damage if the material supply is too low

STREAMLINE YOUR BUSINESS

BlueLink Job and Sprayer Management App

- Track every sprayer
- Know job progress
- Maximize uptime

THE LONGEST LASTING DRIVE Advantage Drive

Hardened steel gears provide extremely quiet operation and a lifetime warranty

ALL-DAY COMFORT AND CONTROL

New Contractor PC Spray Gun

- Lightest weight gun in its class
- Up to 50% lighter trigger pull force with E-Z Fit adjustable trigger length
- Complete no-tools gun rebuild in seconds with ProConnect cartridge

NEW! RAC X LP SWITCHTIP

- Up to 50% less overspray
- Perfect Airless Finish
- Up to 2X tip life

MAINTENANCE-FREE HIGH-PRESSURE DUMPING CAPABILITY

Heavy-Duty Prime Valve

FAST CLEANING NOW EVEN FASTER

New FastFlush 2 System

- Clean the pump 6X faster using 1/2 the water
- High-velocity fluid flow delivered with 60% higher motor speed

GET MORE WORK DONE

MaxPower Motor

- Proven performance for all painting applications
- High-torque brushless design with a Lifetime Warranty

EASY MAINTENANCE AND LESS CLOGGING

Easy Out Filters

- Exclusive inside-out filtering process ensures a quality finish
- Vertical design for less mess



| LARGE ELECTRICS | MAX TIP SIZE | MAX GPM | LO-BOY | HI-BOY |
|---------------------|--------------|---------|--------|--------|
| Ultimate MX II 695 | .031 | .95 | 826222 | 826223 |
| Ultimate MX II 795 | .033 | 1.10 | | 826225 |
| Ultimate MX II 1095 | .035 | 1.20 | | 826227 |
| Ultimate MX II 1595 | .039 | 1.35 | | 826230 |

PROCONTRACTOR SERIES

WORK SMARTER, FINISH MORE JOBS



The ProContractor Series is designed to deliver speed and performance so you can get to the next jobsite faster and increase your profits.



SUPERIOR PUMP LIFE

New Endurance Vortex MaxLife Piston Pump

Breakthrough Vortex Rotating Rod Technology Keeps You Spraying:

- Oversized passages for high-velocity flow to rotate rod for even wear
- Lasts 6X longer between repacks with innovative MaxLife technology
- Repack pump in minutes with new QuikPak cartridge repair system



ELIMINATE COSTLY DOWNTIME

ProConnect 2 Pump Replacement System

- Exchange pump in minutes — pinless design needs no tools



EASY HOSE MANAGEMENT

QuikReel Hose Management System

- Deploy and rewind up to 300 feet of hose in seconds
- No twisting, kinking, or coiling
- Use only the hose you need — the rest stays on the reel



DURABLE FILTRATION

Crushproof Inlet Strainer

- Stands up to harsh impacts to maintain flow through filter



Ready to Spray: Complete with Contractor PC Spray Gun, 50 ft FlexPro hose, and RAC X SwitchTip

Ultimate MX II 795 ProContractor 826226

ProContractor Series sprayers also include all Standard Series features:

- BlueLink Job and Sprayer Management App
- SmartControl with ProGuard
- FastFlush 2
- Contractor PC Spray Gun
- **NEW** RAC X Low Pressure SwitchTip
- Easy Out Filter Manifold
- Precision Advantage Drive
- MaxPower Motor
- Heavy-Duty Prime Valve
- Rugged, Durable Cart Design



| PROCONTRACTOR SERIES LARGE ELECTRICS | MAX TIP SIZE | MAX GPM | PART # |
|--------------------------------------|--------------|---------|--------|
| Ultimate MX II 695 | .031 | .95 | 826224 |
| Ultimate MX II 795 | .033 | 1.10 | 826226 |
| Ultimate MX II 1095 | .035 | 1.20 | 826228 |
| Ultimate MX II 1595 | .039 | 1.35 | 826232 |



IRONMAN SERIES

BEYOND JOBSITE TOUGH

IronMan Series electric sprayers are built to routinely handle the rugged demands of large commercial and industrial jobs — day in and day out.



Ready to Spray: Complete with Contractor PC Spray Gun, 50 ft FlexPro hose, and RAC X LP 517 SwitchTip

Ultimate MX II 1595 IronMan 826234

IronMan Series sprayers also include all Standard Series features:

- BlueLink Job and Sprayer Management App
- SmartControl with ProGuard
- FastFlush 2
- Contractor PC Spray Gun
- **NEW** RAC X Low Pressure SwitchTip
- Easy Out Filter Manifold
- Precision Advantage Drive
- MaxPower Motor
- Heavy-Duty Prime Valve
- Rugged, Durable Cart Design



| IRONMAN SERIES LARGE ELECTRICS | MAX TIP SIZE | MAX GPM | PART # |
|--------------------------------|--------------|---------|--------|
| Ultimate MX II 1095 | .035 | 1.20 | 826229 |
| Ultimate MX II 1595 | .039 | 1.35 | 826234 |



THE LONGEST LIFE EVER

New Endurance Vortex MaxLife Extreme Piston Pump

Breakthrough Vortex Rotating Rod Technology Keeps You Spraying:

- Oversized passages for high-velocity flow to rotate rod for even wear
- 6X more gallons sprayed between repacks. Extreme rod extends pump rod life by 3X
- Graco exclusive abrasion-resistance composite delivers the most durable wear surface
- Repack pump in minutes with new QuikPak cartridge repair system



ELIMINATE COSTLY DOWNTIME

ProConnect 2 Pump Replacement System

- Exchange pump in minutes — pinless design needs no tools



NEVER HAVE A FLAT AGAIN

Flat Proof Tires

- Tires can't be punctured by nails, screws, or other sharp debris



DURABLE FILTRATION

Crushproof Inlet Strainer

- Stands up to harsh impacts to maintain filtering and flows

ACCESSORIES

SPEND LESS TIME, MAKE MORE MONEY

Maximize your performance and get to the next job faster by customizing your sprayer with proven Graco accessories.



RAC X LOW PRESSURE SWITCHTIPS

| (Neon Handle) | | Orifice Size - Inches | | | | | | | | | | |
|-------------------------|-----------|-----------------------|------|------|------|------|------|------|------|------|------|------|
| Fan Width | in | (mm) | .013 | .015 | .017 | .019 | .021 | .023 | .025 | .027 | .029 | .031 |
| | 4-6 | (102-152) | | | 217 | | | | | | | |
| 6-8 | (152-203) | 313 | 315 | 317 | 319 | | | | | | | |
| 8-10 | (203-254) | | 415 | 417 | 419 | 421 | 423 | 425 | | | | |
| 10-12 | (254-305) | | 515 | 517 | 519 | 521 | 523 | 525 | 527 | | | |
| 12-14 | (305-356) | | | 617 | 619 | 621 | 623 | 625 | 627 | 629 | 631 | |
| 14-16 | (356-406) | | | | | | 723 | 725 | | 729 | 731 | |
| Flow Rate (gpm)* | | .18 | .24 | .31 | .38 | .47 | .57 | .67 | .77 | .90 | 1.03 | |
| Flow Rate (lpm)* | | .69 | .91 | 1.17 | 1.47 | 1.79 | 2.15 | 2.54 | 2.96 | 3.42 | 3.90 | |
| Recommended Filter Size | | 100 | 60 | 60 | 60 | 60 | 60 | 60 | 60 | 60 | 30 | |

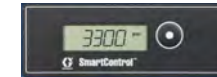
RAC X LOW PRESSURE SWITCHTIPS MAXIMIZE PROFIT BY DELIVERING:

- Up to 2X the tip life
- Up to 50% less over spray
- Perfect Airless Finish
- Easiest pattern overlap
- Reduced prep and cleanup time



BATTERY & CHARGER

| PART # | DESCRIPTION |
|--------|--|
| 20A162 | DEWALT 20V/60V MAX* FlexVolt 6ah Battery |
| 20A165 | DEWALT Fan-Cooled Fast Charger |



287904



17H886

DIGITAL DISPLAYS

| PART # | DESCRIPTION |
|--------|---|
| 287098 | Digital Display for Ultimate NOVA 395 PC — Does not include BlueLink |
| 287904 | Digital Display for Ultimate MX II 490/495/595/650 PC Pro — Does not include BlueLink |
| 17H886 | LED Display for SmartControl fits Ultimate MX II 695/795/1095/1595 Fits all SmartControl models. Includes BlueLink and WatchDog feature. Only available on existing models built with BlueLink. |



Contractor FTx® 288438 Contractor PC 826252 Contractor PC Compact 826261

SPRAY GUNS

| PART # | DESCRIPTION |
|--------|---|
| 826261 | Contractor PC Compact Gun with RAC X LP 517 Tip and Guard. Includes FREE LTX 517 tip |
| 19Y443 | Contractor PC Compact Gun with RAC X FF LP 210 Tip and Guard |
| 826252 | Contractor PC Gun with RAC X LP 517 tip and Guard. Includes FREE LTX 517 tip |
| 17Y470 | Contractor PC Gun with RAC X FF LP 210 Tip and Guard |
| 19Y349 | Contractor PC Compact Gun with RAC X LTX 517 Tip and Guard |
| 17Y042 | Contractor PC Gun with RAC X LTX 517 Tip and Guard |
| 288438 | FTx Gun (4-finger trigger) with RAC X LP 517 Tip and Guard |
| 288429 | FTx Gun (2-finger trigger) with RAC X 515 Tip and Guard |
| 288430 | FTx Gun (4-finger trigger) with RAC X 515 Tip and Guard |
| 21A014 | Silver Plus Gun with RAC X LP 517 Tip and Guard |
| 246240 | Silver Plus Gun with RAC X 517 Tip and Guard |
| 287023 | 3 ft (0.9 m) Pole Gun with Contractor Inline Valve, CleanShot Valve, RAC X LP 517 Tip and Guard |
| 287024 | 6 ft (1.8 m) Pole Gun with Contractor Inline Valve, CleanShot Valve, RAC X LP 517 Tip and Guard |



JetRoller System, 9 in (230 mm) Contractor In-Line Valve 24U172

JETROLLER™ SYSTEMS AND ACCESSORIES

| PART # | DESCRIPTION |
|--------|---|
| 24U170 | 9 in (230 mm) Roller System with RAC X LTX 721 Tip* |
| 24U172 | 9 in (230 mm) Roller System, RAC X LTX 721 Tip and Contractor In-Line Valve* |
| 24V926 | 9.5 in (241 mm) Roller System, RAC X LTX 721 Tip and Contractor In-Line Valve* |
| 24W128 | 14 - 18 in. (356- 457 mm) Adjustable Roller System, RAC X WR 1223 Tip and Contractor In-Line Valve* |
| 224399 | 45° Adapter |

*All systems include Roller Handle Assembly, RAC X Guard, 12 in (305 mm) Roller Handle Extension, 20 in (51 cm) Heavy-Duty Extension, and CleanShot™ Shut-Off Valve. (Roller cover not included.)



17H171

SIPHON AND HOPPER KITS

| PART # | DESCRIPTION |
|--------|---|
| 17H171 | 1.5 Gallon (5.7 liter) Hopper Assembly, lid included (390 PC-595 PC Pro) |
| 246386 | 5 Gallon (18.9 liter) Siphon Set (390-595) |
| 248216 | 5 Gallon (18.9 liter) Siphon Set (650/695/795/1095/1595) |
| 248317 | 30/55 Gallon (113.5/208 liter) Siphon Set (650/695/795/1095/1595) |
| 17H171 | 1.5 Gallon Hopper kits -Ideal for spraying small amounts of material. (Compatible with 390 - 595) |



FILTERS AND INLET STRAINERS

| PART # | DESCRIPTION |
|--------|---|
| 287032 | 60 Mesh FTx/Contractor/Contractor PC Gun Filter |
| 287033 | 100 Mesh FTx/Contractor/Contractor PC Gun Filter |
| 257130 | 200 Mesh FTx/Contractor/Contractor PC Gun Filter |
| 19Y355 | 60 Mesh Contractor PC Compact Gun Filter |
| 19Y356 | 100 Mesh Contractor PC Compact Gun Filter |
| 19F826 | 200 Mesh Contractor PC Compact Gun Filter |
| 246425 | Easy Out Filters – Short, Gray, 30 Mesh (390-650) |
| 246384 | Easy Out Filters – Short, Black, 60 Mesh (390-650) |
| 246382 | Easy Out Filters – Short, Blue, 100 Mesh (390-650) |
| 246383 | Easy Out Filters – Short, Red, 200 Mesh (390-650) |
| 244071 | Easy Out Filters – Long, Gray, 30 Mesh (695-1595) |
| 244067 | Easy Out Filters – Long, Black, 60 Mesh (695-1595) |
| 244068 | Easy Out Filters – Long, Blue, 100 Mesh (695-1595) |
| 244069 | Easy Out Filters – Long, Red, 200 Mesh (695-1595) |
| 246385 | Inlet Strainer (390-595) |
| 235004 | Inlet Strainer – Standard Series (650) |
| 189920 | Inlet Strainer – Standard Series (695-1595) |
| 15V573 | Crushproof Inlet Strainer — ProContractor and IronMan Series (695-1595) |
| 287253 | Parts ToolBox (695-1595) |

FOR PART NUMBERS & MORE DETAILS ON ALL AIRLESS ACCESSORIES:

Visit graco.com/accessories or ask your local authorized Graco Distributor



graco.com/accessories

SPRAY WITH CONFIDENCE

Finish Every Job, Every Time

Downtime is costly. With the Endurance Advantage Program, you'll never need to worry about it again. Depending on the sprayer you purchase:

Receive up to 70% OFF the list price of an Endurance Pump OR — Receive a FREE Repair Kit if you'd rather repack your own pump.

Follow the registration instructions included with your sprayer.



For more information visit graco.com/endurance



INDUSTRY-LEADING WARRANTY PROTECTION

Every Graco electric sprayer is backed by the industry's best warranty coverage.

LIFETIME ELECTRIC MOTOR WARRANTY*

If the motor fails from normal use, we'll replace it under warranty for the original owner for the life of the sprayer.

LIFETIME DRIVETRAIN WARRANTY*

If the drivetrain fails from normal use, we'll replace it under warranty for the original owner for the life of the sprayer.

30-DAY "JUST ADD PAINT" REPLACEMENT GUARANTEE*



Dissatisfied? Simply return the sprayer to the place you bought it within 30 days. They'll either exchange it for an identical sprayer or you can trade up to a larger sprayer at an additional cost.

3-YEAR WARRANTY*

Coverage against defects in materials and workmanship on the entire sprayer.

DOWNTIME ELIMINATOR PROGRAM*

Part needed for a warranty repair not in stock at your distributor? Get FREE next business day air freight delivery when distributor orders the part by 2 p.m. CT.

CONVENIENT SERVICE

Graco offers more than 5,500 authorized distributor locations in North America and over 700 locations to administer warranty repair.

3-YEAR DEWALT DEFECT WARRANTY*

Coverage against defects in materials and workmanship on batteries and charger

*NORTH AMERICA ONLY. See your local Graco Distributors for country specifics.

| | | NOVA 390 PC | NOVA 390 PC CORDLESS | ULTIMATE NOVA 395 PC | ULTIMATE MX II PC PRO | ULTIMATE MX II 495 PC PRO | ULTIMATE MX II 595 PC PRO | ULTIMATE MX II 650 PC PRO |
|----------------|--------------------------------|---------------|----------------------|----------------------|-----------------------|---------------------------|---------------------------|---------------------------|
| SPECIFICATIONS | Maximum Tip Size | 0.021 | 0.021 | 0.023 | 0.023 | 0.025 | 0.027 | 0.029 |
| | Maximum psi (bar) | 3300 (227) | 3300 (227) | 3300 (227) | 3300 (227) | 3300 (227) | 3300 (227) | 3300 (227) |
| | Maximum gpm (lpm) | 0.47 (1.8) | 0.47 (1.8) | 0.54 (2.0) | 0.54 (2.0) | 0.60 (2.3) | 0.70 (2.6) | 0.80 (3.0) |
| | Motor hp | 5/8 DC | 5/8 Brushless DC | 7/8 TEFC DC | 1.0 Brushless DC | 1.2 Brushless DC | 1.6 Brushless DC | 1.8 Brushless DC |
| | Weight lb (kg) | 33 (15) Stand | 31 (14) Stand | 42 (19) Stand | 34 (15) Stand | 34 (15) Stand | 72 (33) Hi-Boy | 77 (35) Hi-Boy |
| | Gun Support: 1 Gun 2 Gun | 0.021 — | 0.021 — | 0.023 — | 0.023 — | 0.025 — | 0.027 — | 0.029 0.019 |



| SMALL ELECTRICS | | | | | MIDSIZE ELECTRICS | | | |
|-------------------|--|--|--|--|--|--|--|--------------------------------|
| MODEL | Cart Design—Part Number | Stand 826195 Hi-Boy 17C313 | Stand - 826280 Hi-Boy - 25T805 | Stand 826237 Hi-Boy 826239 Lo-Boy 826238 | Stand 826243 Hi-Boy 826245 Lo-Boy 826244 | Stand 826246 Hi-Boy 826248 Lo-Boy 826247 | Hi-Boy 826250 Lo-Boy 826249 | Hi-Boy 826258 Lo-Boy 826259 |
| FEATURES | Endurance Pump | ● | ● | ● | ● | ● | ● | ● |
| | Motor | DC | Brushless DC | TEFC DC | MaxPower Brushless | MaxPower Brushless | MaxPower Brushless | MaxPower Brushless |
| | Advantage Drive | ● | ● | ● | ● | ● | ● | ● |
| | Easy Out (60 Mesh) | ● | ● | ● | ● | ● | ● | ● |
| | SmartControl | Electronic | Electronic | ● | ● | ● | ● | ● |
| | Digital Display | | | | ● | ● | ● | ● |
| | Fast Flush | | | | ● | ● | ● | ● |
| | ProConnect | ● | ● | ● | ● | ● | ● | ● |
| | Gun | FTx | FTx | Contractor PC | Contractor PC | Contractor PC | Contractor PC | Contractor PC |
| | NEW! SwitchTip | RAC X LP 515 | RAC X LP 515 | RAC X LP 517 | RAC X LP 517 | RAC X LP 517 | RAC X LP 517 | RAC X LP 517 |
| Hose | 1/4 in x 50 ft (6.4 mm x 15 m) FlexPro Airless | 1/4" x 50' (6.4 mm x 15 m) FlexPro Airless | 1/4 in x 50 ft (6.4 mm x 15 m) FlexPro Airless | 1/4 in x 50 ft (6.4 mm x 15 m) FlexPro Airless | 1/4 in x 50 ft (6.4 mm x 15 m) FlexPro Airless | 1/4 in x 50 ft (6.4 mm x 15 m) FlexPro Airless | 1/4 in x 50 ft (6.4 mm x 15 m) FlexPro Airless | |
| Power Source | Corded | (2) DEWALT 60V Max FlexVolt 6.0 ah Batteries and (1) Fan-Cooled Fast Charger | Corded | Corded | Corded | Corded | Corded | |
| REPLACEMENT PUMPS | Endurance Pump | 17C487 | 17C487 | 17C487 | 17C487 | 17C487 | 17C487 | 19Y298 |
| | Express Pump | 17J552 | 17J552 | 17J552 | 17J552 | 17J552 | 17J552 | — |
| WEAR PARTS | Repair Kit | 18B260 | 18B260 | 18B260 | 18B260 | 18B260 | 18B260 | 18B260 |
| | Rod | 24W617 | 24W617 | 24W617 | 24W617 | 24W617 | 24W617 | 19Y268 |
| | Cylinder | 24W619 | 24W619 | 24W619 | 24W619 | 24W619 | 24W619 | 19Y267 |
| | Sleeve | — | — | — | — | — | — | 19Y269 |
| | Intake Seat Kit | 246429 | 246429 | 246429 | 246429 | 246429 | 246429 | — |
| MANUAL | Operation / Parts | 334567 | 3A8179 | 3A6519 | 3A6491 | 3A6491 | 3A6491 | 3A6491 |



SPRAY WITH CONFIDENCE

Industry-Leading Warranty Protection

Every Graco electric sprayer is backed by the industry's best warranty coverage.

LIFETIME ELECTRIC MOTOR WARRANTY*

If the motor fails from normal use, we'll replace it under warranty for the original owner for the life of the sprayer.

LIFETIME DRIVETRAIN WARRANTY*

If the drivetrain fails from normal use, we'll replace it under warranty for the original owner for the life of the sprayer.

30-DAY "JUST ADD PAINT" REPLACEMENT GUARANTEE*

Dissatisfied? Simply return the sprayer to the place you bought it within 30 days. They'll either exchange it for an identical sprayer or you can trade up to a larger sprayer at an additional cost.

3-YEAR WARRANTY*

Coverage against defects in materials and workmanship on the entire sprayer.

DOWNTIME ELIMINATOR PROGRAM*

Part needed for a warranty repair not in stock at your distributor? Get FREE next business day air freight delivery when distributor orders the part by 2 p.m. CT.

CONVENIENT SERVICE

Graco offers more than 5,500 authorized distributor locations in North America and over 700 locations to administer warranty repair.

*NORTH AMERICA ONLY. See your local Graco Distributors for country specifics.



FINISH EVERY JOB, EVERY TIME

Downtime is costly. With the Endurance Advantage Program, you'll never need to worry about it again. Depending on the sprayer you purchase:

Receive up to 70% OFF the list price of an Endurance Pump
OR — Receive a FREE Repair Kit if you'd rather repack your own pump.



Every Graco purchase comes with A+ Customer Service.

Questions?
Call (844) 241-9499

For more information visit graco.com/contractor