



INSTRUCTIONS

This manual contains important warnings and information.  
**READ AND KEEP FOR REFERENCE.**

## GM 3500<sup>®</sup> AIRLESS PAINT SPRAYERS Clutch Rotor/Field Clearance Adjustment

### GENERAL REPAIR INFORMATION

#### **WARNING**



##### **INJECTION HAZARD**

The system pressure must be manually relieved to prevent the system from starting or spraying accidentally. Fluid under high pressure can be injected through the skin and cause serious injury. To reduce the risk of an injury from injection, splashing fluid, or moving parts, follow the **Pressure Relief Procedure** whenever you:

- are instructed to relieve the pressure,
- stop spraying,
- check or service any of the system equipment,
- or install or clean the spray tip.

#### **Pressure Relief Procedure**

1. Engage the gun safety latch.
2. Turn the ON/OFF switch to OFF.
3. Unplug the power supply cord.
4. Disengage the gun safety latch. Hold a metal part of the gun firmly to a grounded metal pail. Trigger the gun to relieve pressure.
5. Engage the gun safety latch.
6. Open the pressure drain valve. Leave the pressure drain valve open until ready to spray again.

*If you suspect that the spray tip or hose is completely clogged, or that pressure has not been fully relieved after following the steps above, VERY SLOWLY loosen the tip guard retaining nut or hose end coupling to relieve pressure gradually, then loosen completely. Now clear the tip or hose obstruction.*

**Test your repair before regular operation** of the sprayer to be sure the problem is corrected.

# Adjustment

## **⚠ WARNING**

To reduce the risk of serious injury, follow the illustrated **Pressure Relief Procedure** on page 1 before performing this procedure.

**NOTE:** Read the **GENERAL REPAIR INFORMATION** on page 1 before doing this procedure.

### Tool List

3/16 in. hex key wrench

1/4 in. hex key wrench

Standard screwdriver

Cleaning solvent

1. Remove any residue from the clutch housing (2).
2. Seat the field (6) squarely in the clutch housing. Do not tighten the four field set screws (12).
3. Install the rotor (4b). Set the clearance between the outside diameter of the rotor and the inside diameter of the field with the four 0.006 in. (0.15 mm) gages (A), supplied. Place the gauges 90° apart.
4. Adjust the position of the field with the four field set screws to maintain 0.006 in. (0.15 mm) minimum clearance all the way around the rotor.
5. Tighten the four field set screws, evenly, to 27 in-lb (3.2 N•m). Remove the four gauges.

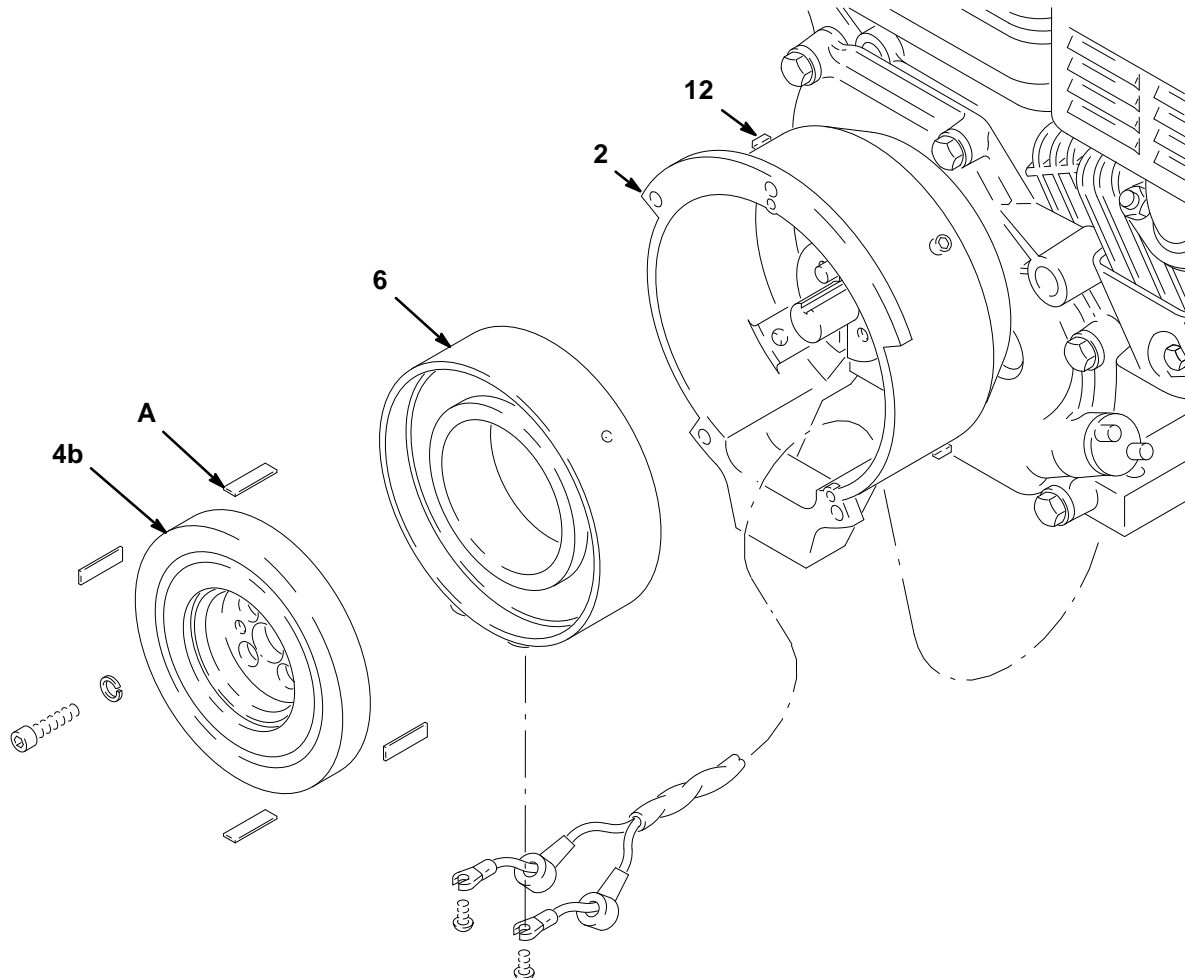


Fig. 1

05701

**Sales Offices:** Atlanta, Chicago, Detroit, Los Angeles  
**Foreign Offices:** Belgium, Canada, England, Korea, Switzerland, France, Germany, Hong Kong, Japan

**GRACO INC. P.O. BOX 1441 MINNEAPOLIS, MN 55440-1441**

PRINTED IN U.S.A. 308-623 February 1996