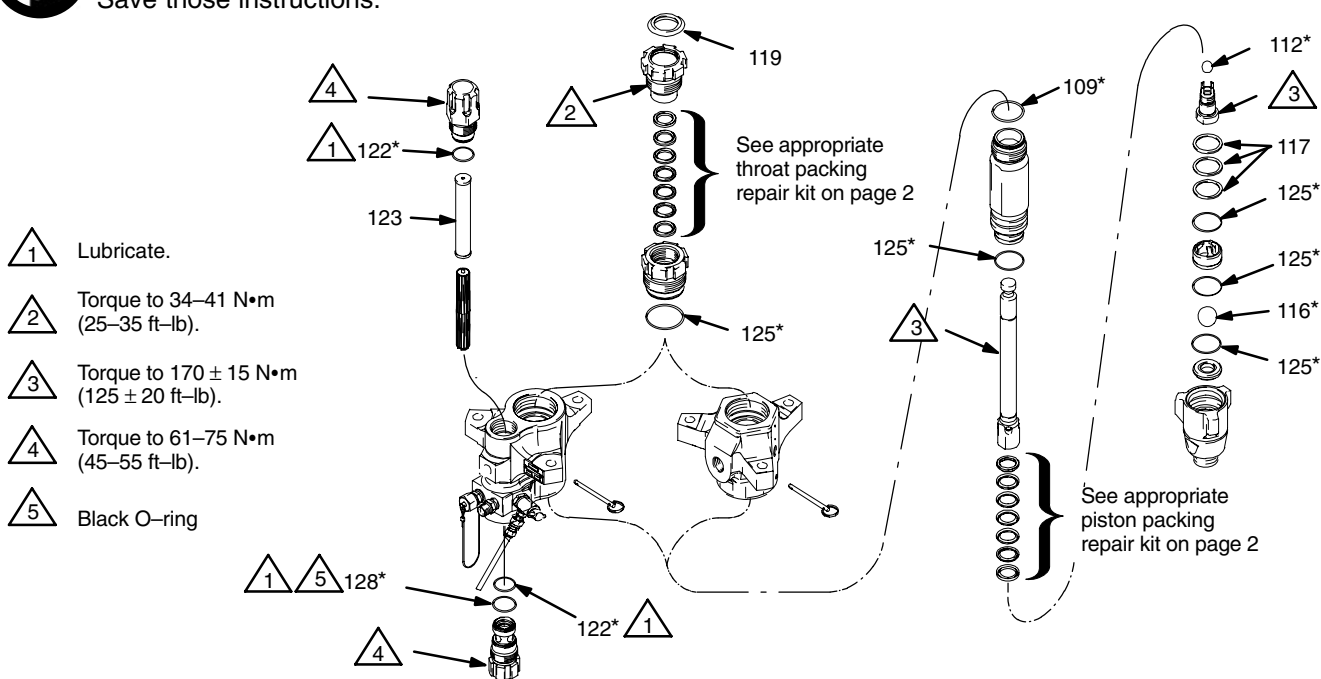


Repair Parts for Xtreme™ 145cc (600) Pump



Important Safety instructions

Read all warnings and instructions in manual 311762.
Save those instructions.



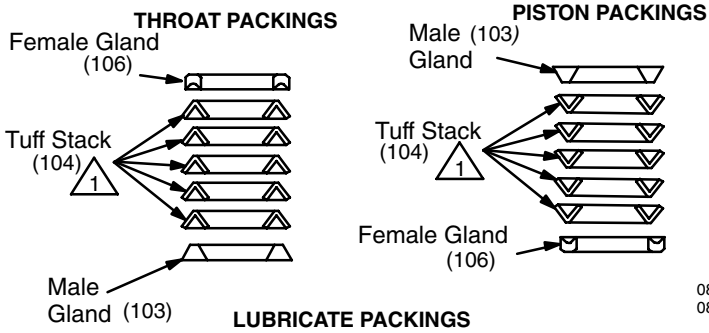
- Lubricate.
- Torque to 34–41 N•m (25–35 ft–lb).
- Torque to 170 ± 15 N•m (125 ± 20 ft–lb).
- Torque to 61–75 N•m (45–55 ft–lb).
- Black O–ring

Bulk Pack Replacement Parts

Ref. No.	Part No.	Description	Qty	Ref. No.	Part No.	Description	Qty
103	244881	GLAND, Packing Male (4/pack)	2	119	244996	PLUG, Throat Seal, 1.75 in. (10/pack)	1
104	244857	PACKING, Vee, Tuff Stack (10/pack)	10	119	247394	PLUG, Throat Seal, 2.5 in. (10/pack)	1
105	244869	PACKING, Vee, Leather (10/pack)	4	122*	24B732	PACKING, O–ring, Filter, chemical resistant (10/pack)	2
135	244863	PACKING, Vee, Xtreme Seal (10/pack)	6	123	224459	STRAINER, 60 Mesh Screen (2/pack)	1
106	244875	GLAND, Packing Female (4/pack)	2	123	238438	STRAINER, 60 Mesh Screen (25/pack)	1
109*	244892	PACKING, O–ring, Top Cylinder (10/pack)	1	125*	244890	PACKING, O–ring (10/pack)	5
112*	253029	BALL (piston) (3/pack)	1	128*	24B733	PACKING, O–ring, chemical resistant (10/pack)	1
116*	253031	BALL (Inlet) (3/pack)	1				
117	244855	SHIM, Inlet (9/pack)	3				

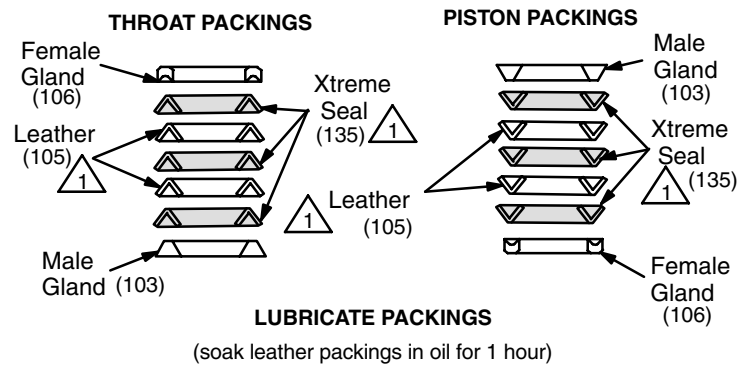
Tuff Stack™ Repair Kit 244900

* Included with repair kit – see Bulk Pack Replacement Parts on page 1.



Xtreme Seal™ and Leather Repair Kit 244850

* Included with repair kit – see Bulk Pack Replacement Parts on page 1.



All written and visual data contained in this document reflect the latest product information available at the time of publication. Graco reserves the right to make changes at any time without notice.

Original instructions. This manual contains English. MM 406515

Graco Headquarters: Minneapolis
International Offices: Belgium, China, Japan, Korea

GRACO INC. P.O. BOX 1441 MINNEAPOLIS, MN 55440-1441

©2001, Graco Inc. is registered to ISO 9001

www.graco.com

Revised 04/2010