



This manual contains important warnings and information.
READ AND KEEP FOR REFERENCE.

INSTRUCTIONS

Upright Cart Kit 238780

For the 390st, 450st and 490st sprayers.

⚠ WARNING



INJECTION HAZARD

The system pressure must be manually relieved to prevent the system from starting or spraying accidentally. Fluid under high pressure can be injected through the skin and cause serious injury. To reduce the risk of an injury from injection, splashing fluid, or moving parts, follow the **Pressure Relief Procedure** whenever you:

- are instructed to relieve the pressure,
- stop spraying,
- check or service any of the system equipment,
- or install or clean the spray tip.

Pressure Relief Procedure

1. Engage the gun safety latch.
2. Turn the ON/OFF switch to OFF.
3. Unplug the power supply cord.
4. Disengage the gun safety latch. Hold a metal part of the gun firmly to the side of a grounded metal pail, and trigger the gun to relieve pressure.
5. Engage the gun safety latch.
6. Open the pressure drain valve. Have a container ready to catch the drainage. Leave the valve open until ready to spray again.

If you suspect that the spray tip or hose is completely clogged or that pressure has not been fully relieved after following the steps above, **VERY SLOWLY** loosen the tip guard retainer nut or hose end coupling to relieve pressure gradually. Clear the obstruction.

1. Relieve pressure.
2. Disconnect the spray hose and drain hose (F). To remove the suction hose, pull upward on the hose (B) while unscrewing it from the inlet tube (C). The hose coupling threads will engage and the hose will separate from the tube. See Fig. 1.
3. Models with RFI line filter only: Manually rotate the motor fan blades to fully lower the pump rod. Push the retaining spring (E) up and remove the pin (D). Remove the capscrews (A) and the pump. See Fig. 1.
4. Unscrew the inlet tube (C) from the pump without turning the pump inlet valve.
5. Models with RFI line filter only: Reattach the pump to the sprayer, making sure the retaining spring (E) is securely around the pin (D). Tighten the screws (A) to 45–50 ft-lb (61–68 N.m). See Fig. 2.

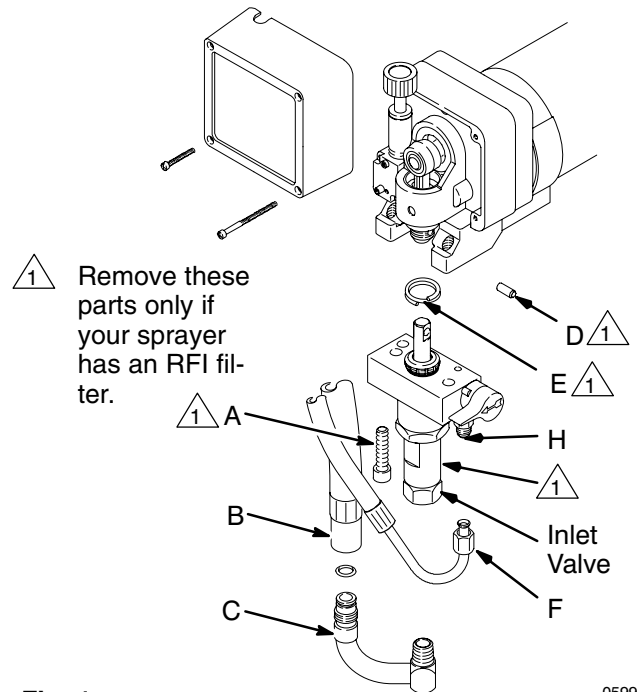


Fig. 1

05996

1
Torque to
40–50 ft-lb
(61–68 N.m)

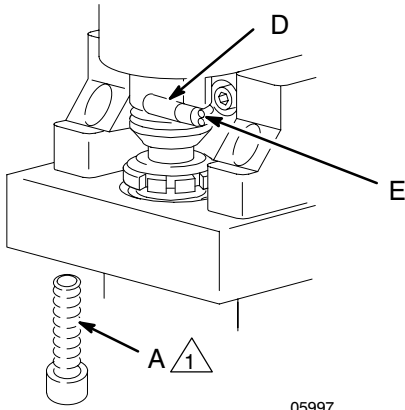


Fig. 2

05997

6. Remove the two screws which hold the motor from the bottom of the motor mounting plate. Keep the screws (G). See Fig. 3.
7. Mount the sprayer to the new cart using the screws (G). Tighten to 50–55 in-lb (5.6–6.2 N.m).
8. Apply thread sealant (supplied) to the short threaded end of the suction tube (2). Screw the suction tube tightly into the pump. Screw on the strainer (4) until the tube end is about 0.3 in. (7 mm) from the wire screen. See Fig. 3.
9. Replace the drain hose nipple (H) with the adapter (17). Insert drain tube (2) into the adapter and secure it to the pump and suction tube with spring clips (3) and (18) See Fig. 3.

Parts

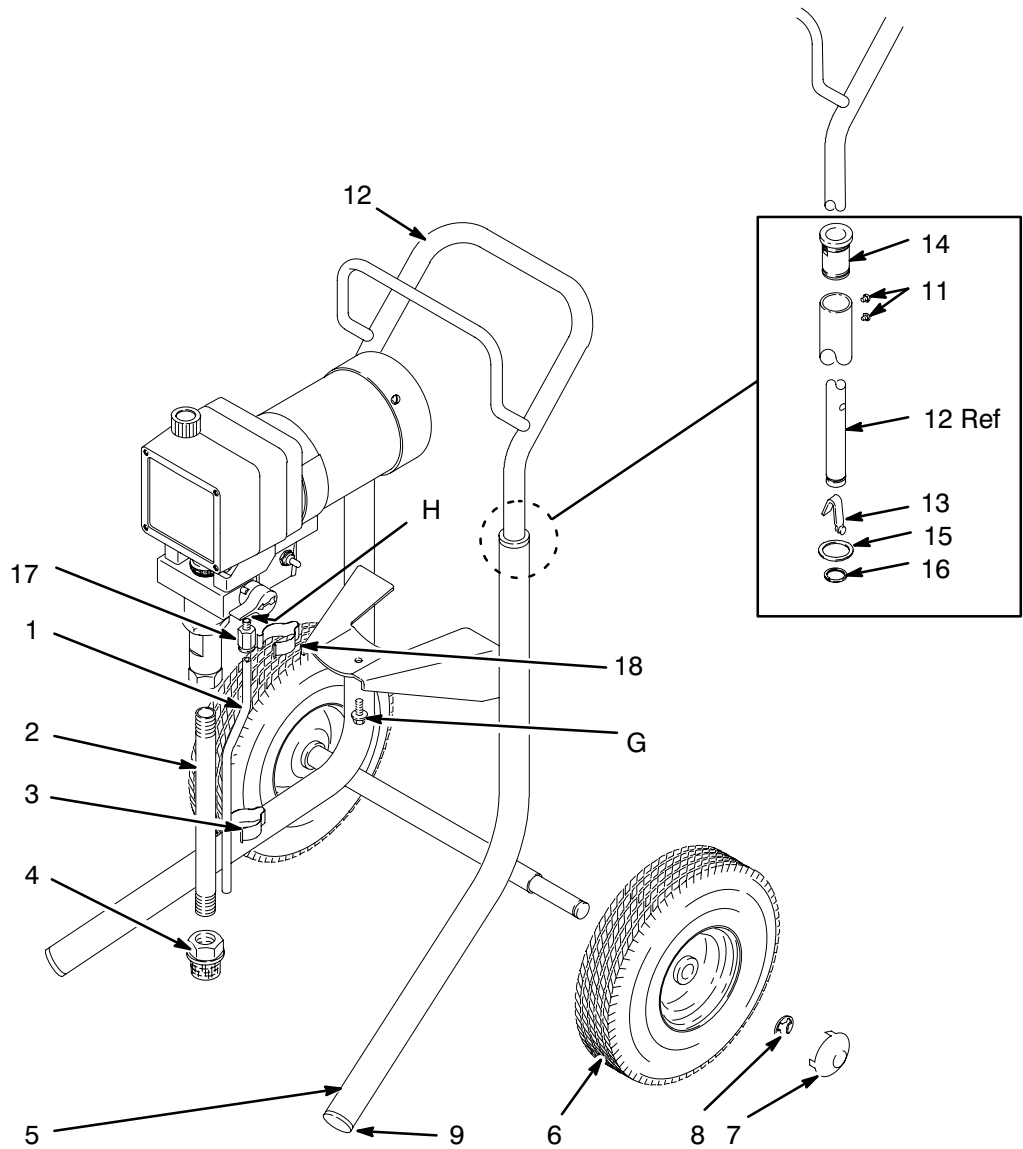


Fig. 3

05995

Part No. 238780

Ref. No.	Part No.	Description	Qty.	Ref. No.	Part No.	Description	Qty.
1	186549	Drain tube	1	10	119400	Sealant <i>not shown</i>	1
2	189928	Suction tube	1	11	109032	Screw	4
3	178342	Spring clip, tube	1	12	239998	Handle	1
4	187765	Inlet strainer	1	13	111590	Snap button	2
5	238669	Cart frame	1	14	192027	Sleeve	2
6	106062	Wheel	2	15	183350	Washer	2
7	104811	Hubcap	2	16	110243	Retaining ring, handle	2
8	101242	Retainer clip, wheel	2	17	108982	Tubing adapter	1
9	108691	Plug	2	18	181102	Spring clip, pump	1

Graco Standard Warranty

Graco warrants all equipment manufactured by Graco and bearing its name to be free from defects in material and workmanship on the date of sale by an authorized Graco distributor to the original purchaser for use. With the exception of any special, extended, or limited warranty published by Graco, Graco will, for a period of twelve months from the date of sale, repair or replace any part of the equipment determined by Graco to be defective. This warranty applies only when the equipment is installed, operated and maintained in accordance with Graco's written recommendations.

This warranty does not cover, and Graco shall not be liable for general wear and tear, or any malfunction, damage or wear caused by faulty installation, misapplication, abrasion, corrosion, inadequate or improper maintenance, negligence, accident, tampering, or substitution of non-Graco component parts. Nor shall Graco be liable for malfunction, damage or wear caused by the incompatibility of Graco equipment with structures, accessories, equipment or materials not supplied by Graco, or the improper design, manufacture, installation, operation or maintenance of structures, accessories, equipment or materials not supplied by Graco.

This warranty is conditioned upon the prepaid return of the equipment claimed to be defective to an authorized Graco distributor for verification of the claimed defect. If the claimed defect is verified, Graco will repair or replace free of charge any defective parts. The equipment will be returned to the original purchaser transportation prepaid. If inspection of the equipment does not disclose any defect in material or workmanship, repairs will be made at a reasonable charge, which charges may include the costs of parts, labor, and transportation.

THIS WARRANTY IS EXCLUSIVE, AND IS IN LIEU OF ANY OTHER WARRANTIES, EXPRESS OR IMPLIED, INCLUDING BUT NOT LIMITED TO WARRANTY OF MERCHANTABILITY OR WARRANTY OF FITNESS FOR A PARTICULAR PURPOSE.

Graco's sole obligation and buyer's sole remedy for any breach of warranty shall be as set forth above. The buyer agrees that no other remedy (including, but not limited to, incidental or consequential damages for lost profits, lost sales, injury to person or property, or any other incidental or consequential loss) shall be available. Any action for breach of warranty must be brought within two (2) years of the date of sale.

Graco makes no warranty, and disclaims all implied warranties of merchantability and fitness for a particular purpose in connection with accessories, equipment, materials or components sold but not manufactured by Graco. These items sold, but not manufactured by Graco (such as electric motors, switches, hose, etc.), are subject to the warranty, if any, of their manufacturer. Graco will provide purchaser with reasonable assistance in making any claim for breach of these warranties.

In no event will Graco be liable for indirect, incidental, special or consequential damages resulting from Graco supplying equipment hereunder, or the furnishing, performance, or use of any products or other goods sold hereto, whether due to a breach of contract, breach of warranty, the negligence of Graco, or otherwise.

FOR GRACO CANADA CUSTOMERS

The parties acknowledge that they have required that the present document, as well as all documents, notices and legal proceedings entered into, given or instituted pursuant hereto or relating directly or indirectly hereto, be drawn up in English. Les parties reconnaissent avoir convenu que la rédaction du présente document sera en Anglais, ainsi que tous documents, avis et procédures judiciaires exécutés, donnés ou intentés à la suite de ou en rapport, directement ou indirectement, avec les procédures concernées.

TO PLACE AN ORDER, contact your Graco distributor, or call **1-800-690-2894** to identify the nearest distributor.

*All written and visual data contained in this document reflects the latest product information available at the time of publication.
Graco reserves the right to make changes at any time without notice.*

Graco Headquarters: Minneapolis
International Offices: Belgium, China, Japan, Korea
GRACO INC. P.O. BOX 1441 MINNEAPOLIS, MN 55440-1441
www.graco.com
PRINTED IN U.S.A. 308653D
2/1996 Rev 2/2005