

3Z8-082

Rev B

E-Z REFERENCE

Supplement to instruction manual 308-082

⚠ WARNING



INJECTION HAZARD

This form is only a quick reference to the features and frequently ordered parts of this sprayer. To reduce the risk of serious injury, including fluid injection, while operating or repairing this sprayer, follow the warnings and instructions in manual 308-082.

GM 3500

GASOLINE-POWERED AIRLESS LINESTRIPER

LineLazer



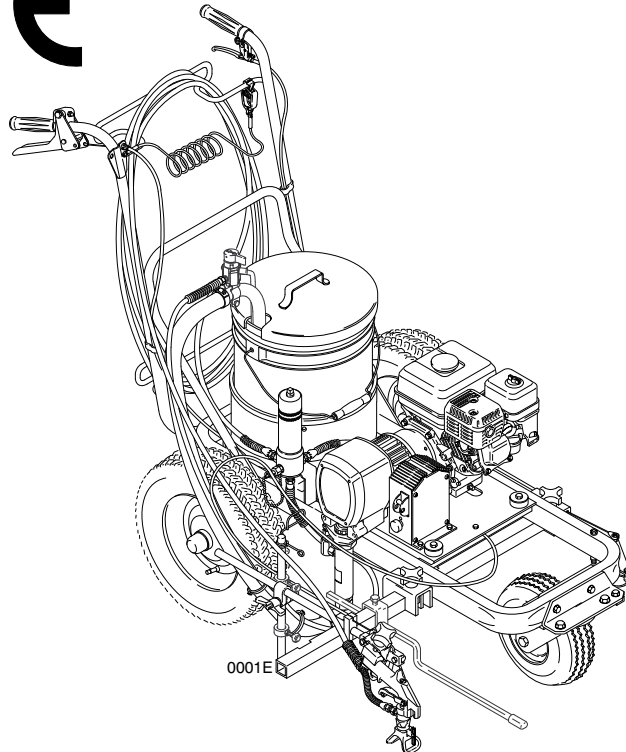
3000 psi (21.0 MPa, 210 bar)
Maximum Working Pressure

Model 231-132, Series A

With one gun, RAC IV[®] DripLess[™] Tip guard,
Size 317 LineLazer Tip & Size 517 SwitchTip[™],
and 50 foot (15 m) hose.

Model 231-140

Same as 231-132, except includes
Second Gun Kit, 224-097



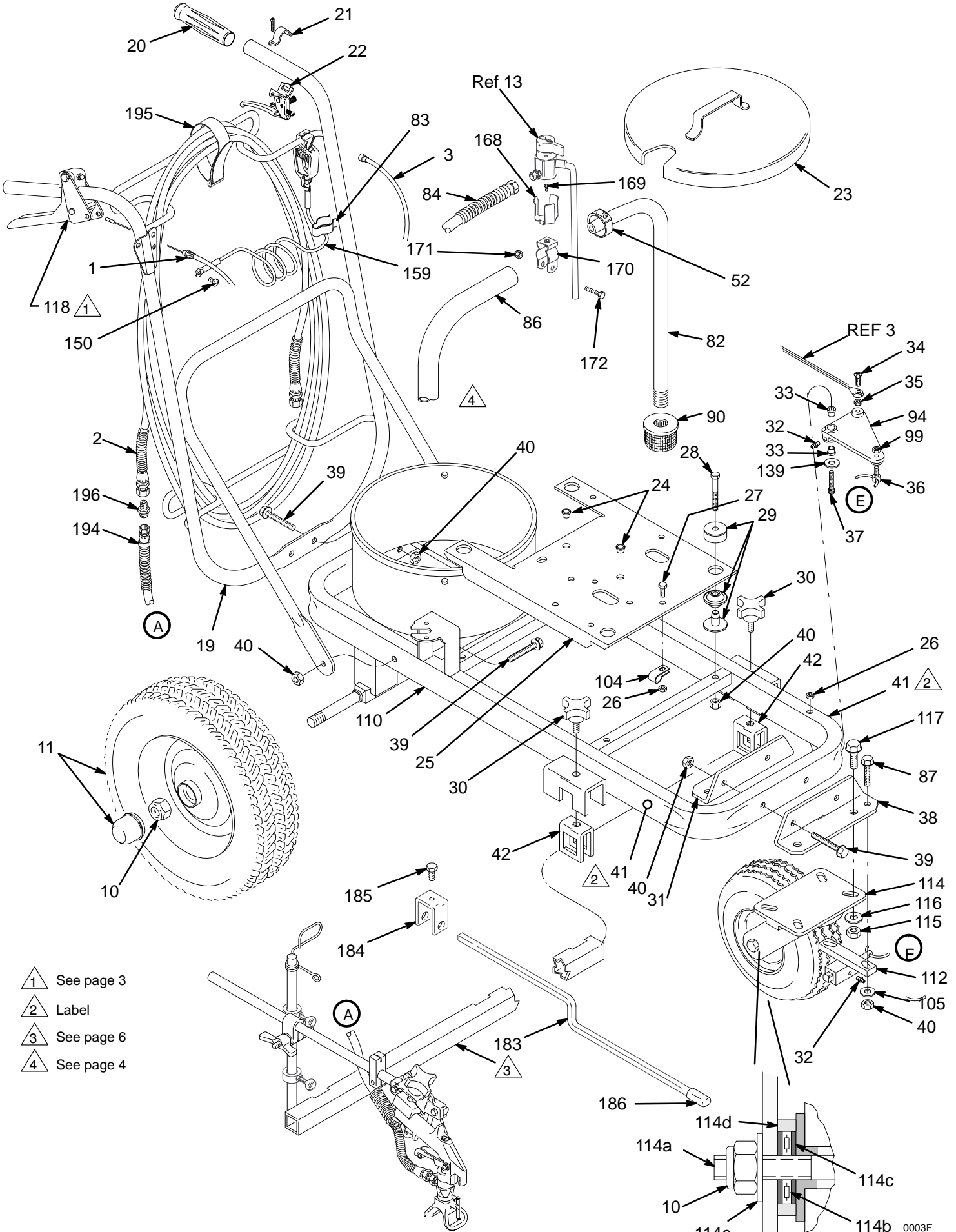
GRACO INC. P.O. BOX 1441 MINNEAPOLIS, MN 55440-1441

<http://www.graco.com>

©COPYRIGHT 1989, GRACO INC.

Graco Inc. is registered to I.S. EN ISO 9001

Parts – Cart



- 1 See page 3
- 2 Label
- 3 See page 6
- 4 See page 4

Parts – Cart

Model 231–132, Series A With one gun
Includes items 1–196

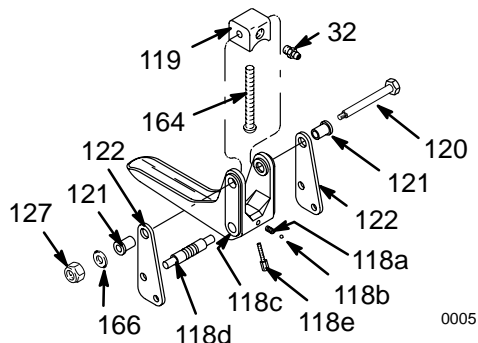
Ref. No.	Part No.	Description	Qty.
1	111–154	CABLE, dual gun selector, 9.6 ft (2.9 m)	1
2	240–484	KIT, hose, linestriper	1
3	111–153	CABLE	1
10	112–405	NUT	3
11	111–020	WHEEL, pneumatic, 16" dia.	2
19	224–021	HANDLE	1
20	108–063	GRIP, handle	2
21	186–787	BRACKET, release lever	1
22	111–197	LEVER, release	1
23	224–246	COVER, pail	1
24	109–099	BUSHING, snap	2
25	186–672	PLATE, mounting	1
26	111–040	LOCKNUT, 5/16–18 w/nylon insert	4
27	110–963	SCREW, serrated flange, hex hd, 5/16–18 x 3/4"	1
28	106–212	CAPSCREW, hex hd, 3/8–16 x 2–3/4"	4
29	104–766	MOUNT, motor	4
30	108–471	KNOB	2
31	186–668	BRACKET, rear caster	1
32	100–846	FITTING, lubrication	1
33	111–016	BEARING, flanged	2
34	111–230	SCREW, mach, flhd, 1/4–20 x 1"	1
35	100–015	NUT, hex, 1/4–20	1
36	186–814	PIN, pivot	1
37	103–262	CAPSCREW, sch, 5/16–18 x 3–1/2"	1
38	186–731	BRACKET, front caster	1
39	111–194	CAPSCREW, serrated flange hd, 3/8–16 x 2"	6
40	101–566	LOCKNUT, 3/8–16 w/nylon insert	16
41▲	186–821	LABEL, Warning (trigger cable)	2
42	224–136	CLAMP, extension	2
52	103–927	CLAMP, hose, 1–1/4"	1
82	183–769	TUBE, suction, 5 gal, 3/4" pipe	1
83	178–342	CLIP, spring	5
84	238–959	HOSE, cpld, 3/16" x 60"	1
85	103–473	WIRE TIE STRAP	3
86	176–920	HOSE, suction	1
87	111–193	CAPSCREW, serrated flange, hex hd, 3/8–16 x 7/8"	2
90	183–770	STRAINER, 16 mesh	1
94	186–747	LEVER, actuator	1
99	101–345	NUT, hex, jam, 1/4–20	1
104	108–868	CLAMP, wire	1
105	100–731	WASHER, 3/8"	2
107	186–620	LABEL, grounding	1
110	224–019	CART	1

Model 231–140 With two guns
Includes items 1–196, and 401–405 (see page 6)

Ref. No.	Part No.	Description	Qty.
112	224–066	CASTER LATCH ASSY <i>Includes 1 of item 32</i>	1
114	237–832	SWIVEL CASTER <i>Includes items 114a–114c</i>	1
114a	112–820	SCREW, cap, hex hd	1
114b	112–822	BEARING, needle	1
114c	112–823	RACE, needle	1
114d	112–824	SEAL	1
114e	112–825	SPRING, Belleville	1
115	801–020	NUT, 1/2–13 w/nylon insert	4
116	101–044	WASHER, flat, 1/2"	4
117	111–195	CAPSCREW, serrated flange, hex hd, 1/2–13 x 1–1/4"	4
118	224–144	REMOTE TRIGGER KIT <i>Includes items 118a to 118e</i>	1
118a	111–018	.SPRING, compression	1
118b	111–206	.BEARING, ball, 3/32"	1
118c	186–746	.TRIGGER	1
118d	186–694	.SPOOL, cable selector	1
118e	186–832	.KNOB	1
119	186–695	BLOCK, mounting	1
120	190–098	PIN, trigger pivot	1
121	111–017	BEARING, flanged	2
122	186–696	PLATE, lever	2
127	107–110	LOCKNUT, with nylon insert, 10–32 unf-2b	1
139	107–194	WASHER, flat 3/8"	1
147	206–994	THROAT SEAL LIQUID, 8 oz (0.27 l)	1
150	112–798	SCREW, thd frmg,	1
159	237–686	GROUNDING CLAMP ASSY	1
161	111–235	SCREW, mach, pnhd	1
165	235–456	BRAKE KIT, See manual 308–227	1
166	100–718	WASHER	1
168	191–874	BRACKET, pressure relief	1
169	113–789	SCREW, mach, truss hd. 8–32 x 0.5"	1
170	113–790	CLAMP, pressure relief	1
171	102–040	NUT, lock	1
172	100–014	SCREW, cap hex hd	1
183	192–222	INDICATOR, line	1
184	192–221	HOLDER, indicator	1
185	100–538	CAPSCREW, hex hd, 5/16–18 x 1/2 in.	1
186	113–690	CAP, vinyl	1
194	224–068	HOSE, cpld, 1/4 in. x 78 in. (f x f)	1
195	114–271	STRAP, retaining	1
196	183–461	NIPPLE, adapter	1

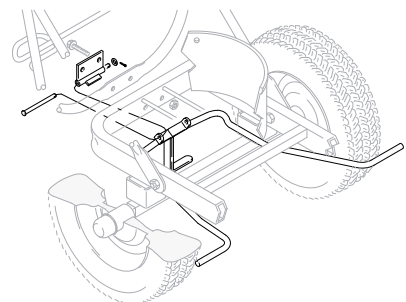
▲ Replacement Danger and Warning labels, tags and cards are available at no cost.

REMOTE TRIGGER DETAIL,
Ref No. 118, Includes 118a–118e



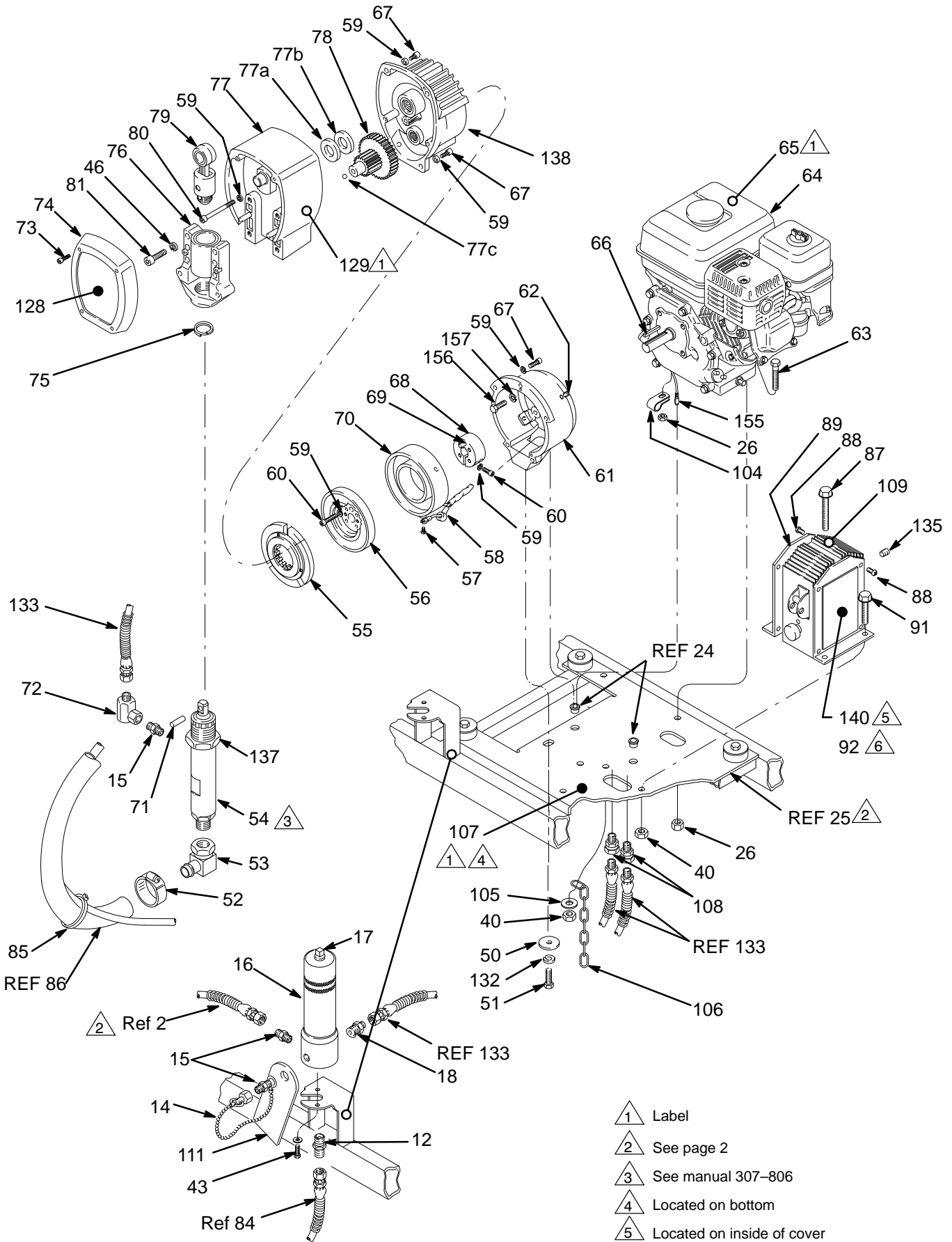
0005

BRAKE KIT, Ref No. 165
Includes solid colored parts



01919

Parts – Mechanical



- 1 Label
- 2 See page 2
- 3 See manual 307–806
- 4 Located on bottom
- 5 Located on inside of cover
- 6 Located on outside of cover

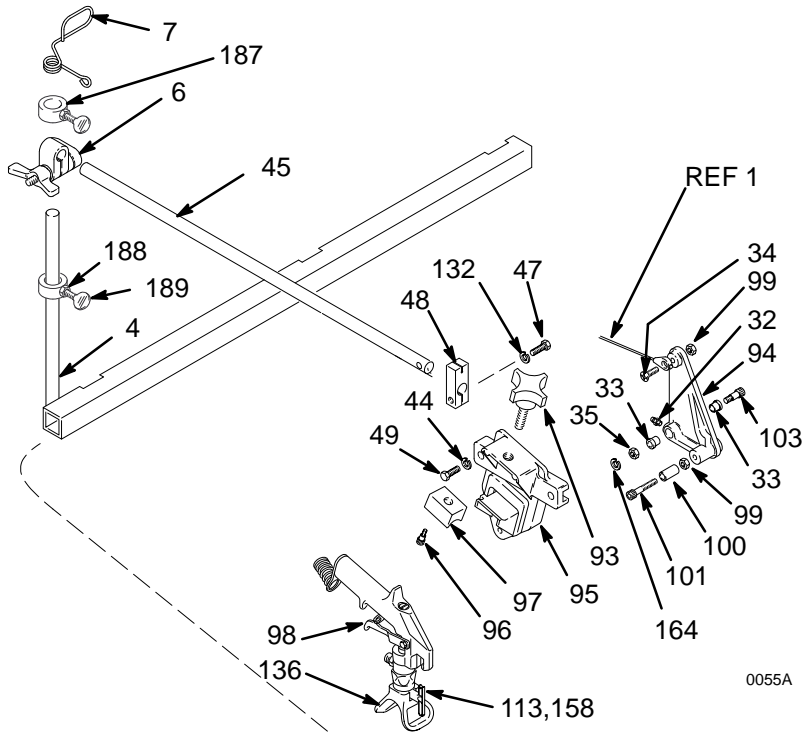
Parts – Mechanical

Ref. No.	Part No.	Description	Qty.	Ref. No.	Part No.	Description	Qty.
12	162-453	NIPPLE, 1/4-18 npsm x 1/4-18 npt	1	74	188-154	COVER, drive housing	1
13	238-960	VALVE, pressure relief	1	75	176-817	SPRING, retaining	1
14	220-285	CAP, secondary fluid outlet	1	76	218-035	BEARING HOUSING	1
15	162-453	NIPPLE, hex, 1/4 npsm x 1/4 npt 1-3/16" long	3	77	223-101	DRIVE HOUSING KIT <i>Includes items 77a to 77c</i>	1
16	218-029	FLUID FILTER, <i>see 307-273 for parts</i>	1	77a	178-967	. WASHER, bronze	1
17	100-040	PLUG, 3/8 npt	1	77b	107-089	. WASHER, silver	2
18	164-672	ADAPTER, 1/4 npsm x 3/8 npt	1	77c	100-069	. BALL	1
26	111-040	LOCKNUT, 5/16-18 w/nylon insert	3	78	221-042	GEAR REDUCER	1
40	101-566	LOCKNUT, 3/8-16 w/nylon insert	4	79	218-034	CONNECTING ROD KIT	1
43	110-997	SCREW, serrated flange, hex hd, 1/4-20 x 5/8"	2	80	107-218	CAPSCREW, hex sch; 1/4-20 x 2-3/4"	2
46	106-115	LOCKWASHER, 3/8", high collar	4	81	107-210	CAPSCREW, sch; 3/8-16 x 1-1/2" (special)	4
50	108-851	WASHER, plain, 3/8"	1	85	103-473	WIRE TIE STRAP	1
51	100-469	CAPSCREW, hex hd; 3/8-16 x 3/4"	1	87	111-193	CAPSCREW, serrated flange hex hd, 3/8-16 x 1-1/4"	1
52	103-927	CLAMP, hose, 1-1/4"	1	88	110-885	SCREW, pnh, thread forming, 10-24 x 3/8"	8
53	110-229	UNION, 90°, 3/4" ID hose x 3/4 npsm swivel	1	89	186-663	BRACKET, pressure control	2
54	222-580	DISPLACEMENT PUMP KIT <i>see 307-806 for parts</i>	1	91	111-192	CAPSCREW, serrated flange hex hd, 3/8-16 x 7/8"	3
55	221-044	CLUTCH ASSEMBLY		92	186-856	LABEL	1
55a		. ARMATURE	1	105	100-731	WASHER, 3/8"	1
56b		. ROTOR, clutch	1	106	186-812	GROUND CHAIN, heavy, 15-5/8" long	1
57	109-033	SCREW, mach, slotted, bdgh 6-32 x 3/16"	2	107	186-620	LABEL, grounding	1
58	221-183	CONDUCTOR, electrical	1	108	156-823	UNION, straight, 1/4 npt(m) x 1/4 npt(f) swivel	2
59	105-510	LOCKWASHER, 1/4"	17	109	222-369	PRESSURE CONTROL KIT	1
60	108-803	CAPSCREW, hex sch; 1/4-28 x 1"	6	111▲	178-034	TAG, WARNING <i>at filter</i>	1
61	183-512	HOUSING, clutch	1	128	186-757	LABEL, identification, drive cover	1
62	108-801	SETSCREW, 1/4-20 x 5/16"	4	129▲	185-953	LABEL, DANGER <i>on drive housing</i>	1
63	110-837	SCREW, serrated flange, hex hd, 5/16-18 x 1-1/2"	3	132	100-133	LOCKWASHER, 3/8"	1
64	108-879	ENGINE, gasoline, 3.5 HP	1	133	235-695	HOSE, 1/4" ID x 2.4', cpld 1/4 npt(m) x 1/4 npsm(f), spring guard full length	2
65▲	181-867	LABEL, WARNING <i>on engine</i>	1	135	101-754	PLUG, pipe, 3/8 npt	1
66	183-401	KEY, shaft	1	137	178-941	NUT, hex, 1-5/8 -18 (special)	1
67	100-644	CAPSCREW, hex sch; 1/4-20 x 3/4"	9	138	223-188	PINION HOUSING	1
68	183-517	CLAMP, mounting, rotor	1	140▲	177-762	LABEL, WARNING <i>inside pressure control cover</i>	1
69	108-800	PIN, dowel; 5/16 x 1"	1	155	224-128	WIRING HARNESS	1
70	185-529	FIELD KIT	1	156	109-031	CAPSCREW, sch, 5/16-24 x 1"	4
71	176-818	PIN, 5/16 x 1.023" (special)	1	157	104-008	LOCKWASHER, 5/16"	4
72	155-541	UNION, 90°, 1/4 npt x 1/4 npsm swivel	1				
73	107-209	SCREW, mach, filh; 8-32 x 1"	4				

▲ Replacement Danger and Warning labels, tags and cards are available at no cost.

Parts – Gun Mounting

Ref. No.	Part No.	Description	Qty.
4	224-052	BRACKET, gun support	1
6	114-029	CLAMP, arm support	1
7	188-135	GUIDE, cable	1
32	100-846	FITTING, lubrication	1
33	111-016	BEARING, flanged	2
34	111-230	SCREW, mach, flhd, 1/4-20 x 1"	1
35	100-015	NUT, hex, 1/4-20	1
44	100-016	LOCKWASHER, 1/4"	2
45	181-734	ARM, support	1
47	100-101	CAPSCREW, hex hd, 3/8-16 x 1"	1 or 2
48	186-699	BLOCK, mounting cable	1
49	100-021	CAPSCREW, hex hd, 1/4-20 x 1"	2
93	181-818	KNOB	1
94	186-747	LEVER, actuator	1
95	188-452	HOLDER, gun	1
96	108-483	SCREW, shoulder, sch, 1/4 x 3/8"	1
97	181-795	JAW, clamp	1
98	235-459	FLEX GUN <i>See manual 308-235 for parts</i>	1
99	101-345	NUT, hex, jam, 1/4-20	2
100	108-535	BEARING, sleeve	1
101	107-445	CAPSCREW, sch, 1/4-20 x 1-1/2"	1
103	111-045	SCREW, shoulder, sch, 5/16 x 1"	1
113	LLT-317	Line Lazer Tip, Sz 317	1
132	100-133	LOCKWASHER, 3/8"	1
136	237-859	RAC IV DripLess TIP GUARD	1
158	221-517	SwitchTip, Size 517	1
164	110-755	WASHER	1
187	113-975	COLLAR, screw, set	2
188	100-077	NUT, hex; 5/16-18 unc	2
189	100-220	SCREW, thumb; 5/16	2



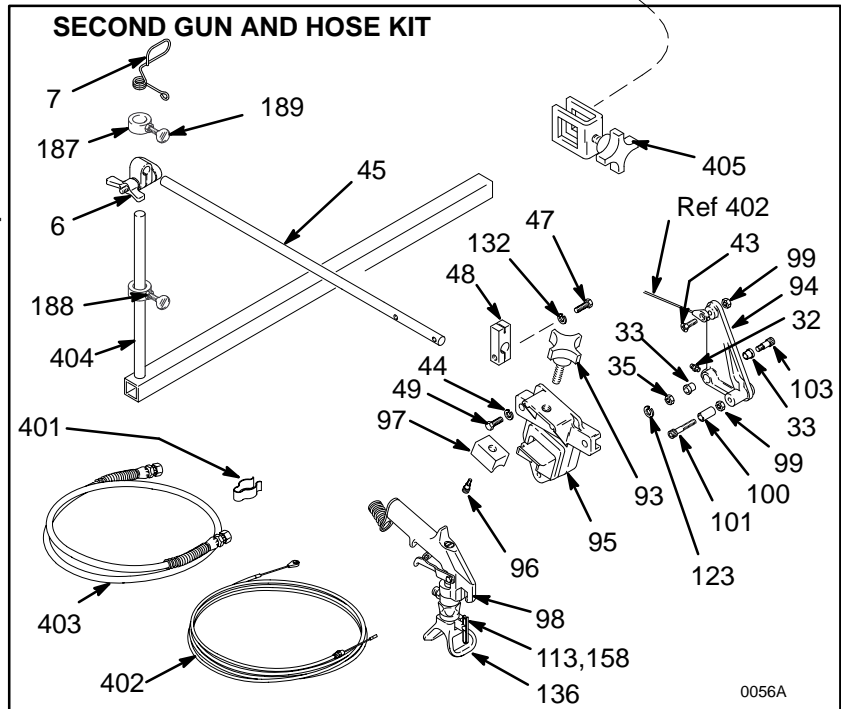
0055A

OPTIONAL SECOND GUN AND HOSE KIT Model 224-097

Included with Sprayer Model 231-140 only

This kit includes the parts shown in the box to the right, which includes items 401-405 and the items listed above except 4.

Ref. No.	Part No.	Description	Qty.
401	178-342	CLIP, spring	1
402	111-155	CABLE, remote trigger	1
403	224-068	HOSE, 1/4" ID, cpld 1/4-18 npsm(f) 6.5 ft (1.2 m) grounded, spring guards	1
404	224-096	BRACKET, support, extension	1
405	224-071	CLAMP, extension	2



0056A

Notes

Technical Data

Engine 4.0 Horsepower, Honda
 Maximum Working Pressure . . . 3000 psi (21.0 MPa, 210 bar)
 Noise Level
 Sound Power 103 dbA
 Sound Pressure 95 dbA @ 1 meter under maximum
 operating conditions
 per ISO-3744
 Cycles/Gallon (liter) 200 (53)
 Maximum Delivery 1.0 gpm (3.79 liter/min)
 Fuel Tank Capacity 0.66 gallons (2.5 liter)
 Maximum Tip Size 1 gun with 0.031 tip;
 2 guns with 0.021 tip
 3 guns with 0.019 tip
 Inlet Paint Strainer 16 mesh (1190 micron)
 Stainless Steel screen, reusable
 Outlet Paint Filter 60 mesh (250 micron)
 Stainless Steel screen, reusable
 Pump Inlet Size 3/4 npt (m)
 Fluid Outlet Size 1/4 npsm from fluid filter
 Wetted parts
 Displacement Pump Zinc-Plated Carbon Steel, Stain-
 less Steel,
 Chrome-Plated Stainless Steel, Polyethylene,
 Tungsten Carbide, Leather, Polyurethane
 Filter Zinc-Plated Carbon Steel, Stainless Steel

Dimensions

Weight	212 lb (96.2 kg)
Height	40 in. (1016 mm)
Length	56 in. (1422 mm)
Width	37 in. (940 mm)

Graco Phone Number

TO PLACE AN ORDER, contact your Graco distributor, or call this number to identify the distributor closest to you: **1-800-367-4023 Toll Free.**

All written and visual data contained in this document reflects the latest product information available at the time of publication. Graco reserves the right to make changes at any time without notice.

Sales Offices: Minneapolis, Detroit, Los Angeles
Foreign Offices: Belgium, Canada, England, Korea, France, Germany, Hong Kong, Japan

GRACO INC. P.O. BOX 1441 MINNEAPOLIS, MN 55440-1441

<http://www.graco.com>

PRINTED IN U.S.A. 3Z8-082 August 1995, revised February 1998