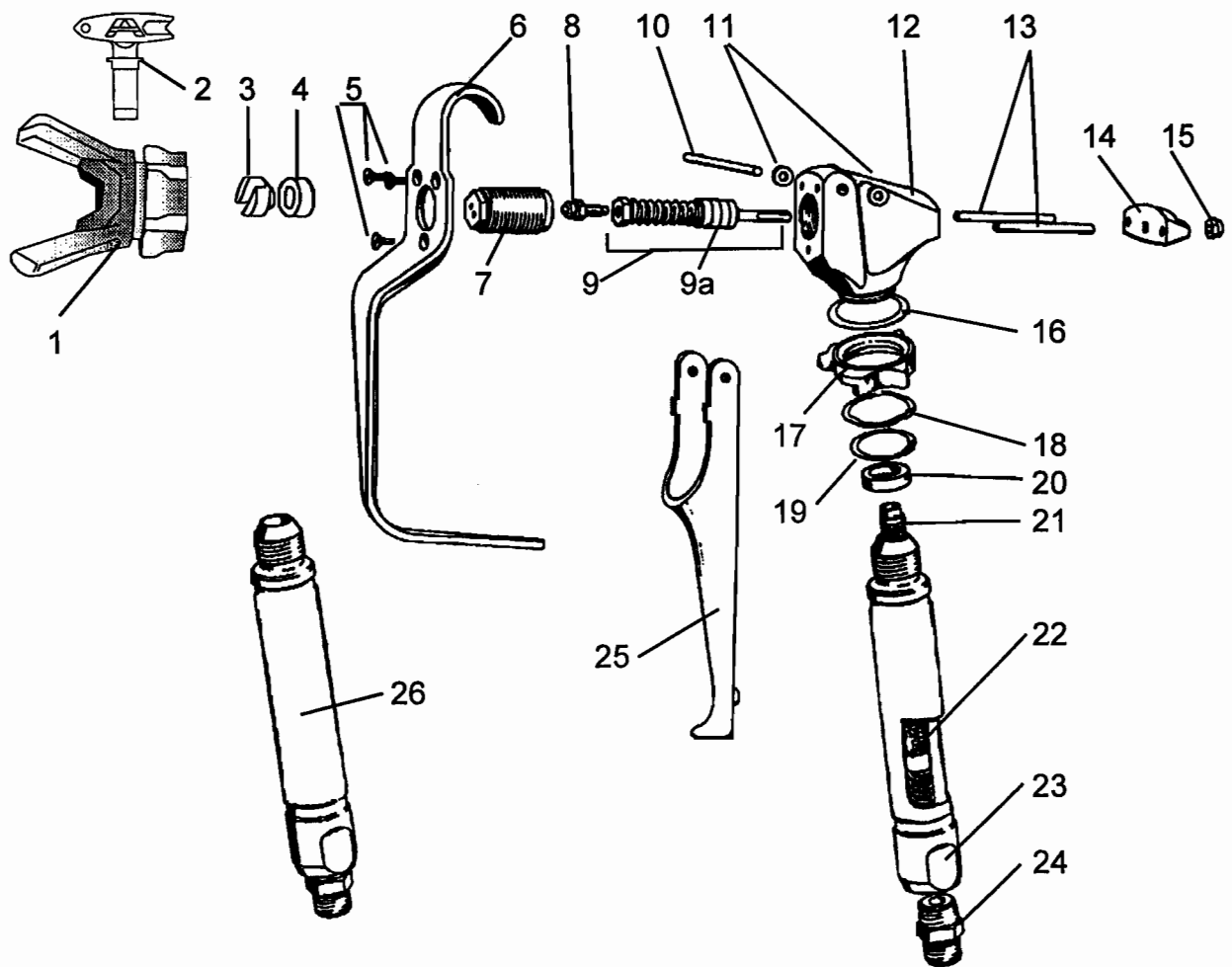


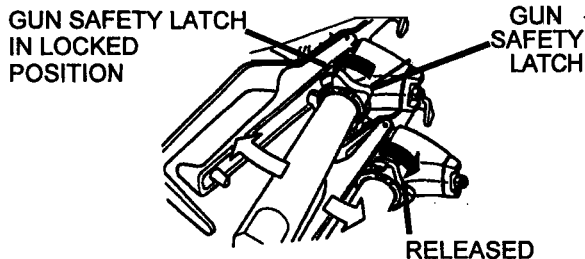
AIRLESSCO 007X & XL SPRAY GUNS



| Item No. | Part No. | Description | Item No. | Part No. | Description |
|----------|----------|------------------------|----------|-----------|--------------------------|
| 1 | 561-001 | Rev-Guard | 15 | 120-021 | Nut |
| 2 | 560-xxx | Rev-Tip | 16 | 120-056 | Washer |
| 3 | 561-025 | Rev-Tip Seal-metal | 17 | 120-048 | Safety Latch or Lock |
| 4 | 561-026 | Rev-Tip Seal-O-ring | 18 | 120-055 | Wave Washer |
| 5 | 120-023 | Screw (3) | 19 | 120-049 | Retaining Ring |
| 6 | 120-005 | Guard | 20 | 120-082 | Seal |
| 7 | 120-035 | Valve Seat Complete | 21 | 120-090CX | Filter-Complete-Coarse |
| 8 | 120-037 | Valve Ball with Holder | 21 | 120-090FX | Filter-Complete-Fine |
| 9 | 120-011 | Valve Spring Unit | 22 | 120-088 | Spring |
| 9a | 120-033 | Seals Teflon (2) | 23 | 120-087 | Handle Complete 007X |
| 10 | 120-022 | Trigger Pin | 24 | 115-019 | Connector |
| 11 | 120-046 | Washer (2) | 25 | 120-044 | Trigger |
| 12 | 120-002 | Gun Head | 26 | 120-085 | Handle with Swivel 007XL |
| 13 | 120-045 | Retainer Pin (2) | | | |
| 14 | 120-020 | Retainer | | | |

AIRLESSCO 007X & 007XL SPRAY GUN

Attach spray gun to hose and tighten fittings securely. Set the gun safety latch. (Also may be called gun safety lock) The gun safety latch should always be set when the gun is not being triggered.



ADJUSTING SPRAY GUN

Hold gun with trigger locked (25) and push trigger against the lock (17). Then adjust nut (15) so that the retainer (14) will move freely back and forth approximately 1/32" to allow valve spring unit (9) to seat the valve ball (8).

IMPORTANT: Readjust nut (15) periodically for wear of valve seat (7) and valve ball (8); otherwise, leakage will occur.

TO REPLACE THE VALVE BALL HOLDER (8)

KIT #2-007

3 Tip Washers 1 Valve Seat (7)
1 Valve Ball Holder (8) 2 Seals-Teflon (9a)

Dismantling:

1. Unscrew Rev-Guard and remove spray tip and seal.
2. Unscrew valve seat (7) with 1/2" socket wrench.

Caution

When removing and replacing valve seat (7), hold the trigger (25) in the open position so that the valve ball (8) is lifted off the valve seat. Failure to lift the ball off the seat will result in a scratched leaky valve.

3. Unscrew valve ball (8) together with the brass part of the assembly (9). Do not pull on the parts or the packing may get damaged.
4. Unscrew the valve ball (8) from the brass part of the assembly (9).

Reassembling is done in reverse sequence. Screw the new valve ball with holder (8) into the brass part (9).

Caution

Tighten valve ball and brass part on threaded end of the shaft by hand until you feel a positive stop. Do not tighten with a wrench since this could result in breaking the shaft.

Note it is recommended that you change the valve seat (7) and valve ball (8) at the same time.

REPLACING THE VALVE SPRING UNIT (9)

KIT#3-007

3 Tip Washers 1 Valve Seat (7)
1 Valve Ball Holder (8) 1 Valve Spring Unit (9)

1. Repeat dismantling procedure as outlined above under Steps 1 through 3.
2. Unscrew nut (15), remove retainer (14) with retainer pins (13) and push shaft of the valve spring unit (9) out of the gun head (12).
3. Clean gun head (12) bore with solvent and small brush. Do not use any sharp objects to scrape away dried paint, as they would cause leakage around the seal.

Reassembling is done in reverse sequence. **IMPORTANT: When reassembling, install valve spring unit (9) with spring loose.**

Push firmly into gun head by hand. Install retainer pins (13), retainer (14) and nut (15) loosely onto valve spring unit (9). By hand turn front of valve spring unit clockwise, tightening the valve spring unit until you feel a positive stop. At that point, continue tightening the valve spring another 1/8 turn expanding the Teflon seals against body of gun.

Caution

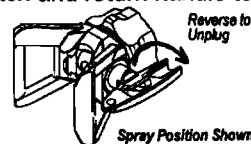
Do not tighten beyond 1/8 turn as this can result in breaking the valve spring unit shaft. Continue reassembly and adjustment as described above.

CLEANING 007 SPRAY GUN

Immediately after the work is finished, flush the gun out with a solvent. Brush pins (13) with solvent and oil them lightly so they will not collect dried paint.

TO REMOVE CLOGS- REVERSIBLE TIP

1. Turn Rev-Tip handle 180 degrees.
2. Disengage gun safety latch & trigger gun into pail.
3. Engage gun safety latch and return handle to spraying position.



CLOGGED FLAT TIP -Should the spray tip become clogged, relieve pressure from hoses by following the "Pressure Relief Procedure" in Machine Manual, secure the gun with safety lock (17), take off Guard, take out the tip, soak in appropriate solvent & clean with a brush. (Do not use a needle or sharp pointed instrument to clean the tip. The tungsten carbide is brittle and can chip.)

CLEANING FILTER

To clean the filter, use a brush dipped in as appropriate solvent. Change or clean filters at least once a day. Some types of latex may require a filter change after four hours of operation.