

Repair Parts for Check-Mate[®] 200cc Displacement Pumps

312468F

EN

**With priming piston and Severe Duty[®] or MaxLife[®] rod and cylinder.
For professional use only.
Not for use in explosive atmospheres.**



Important Safety Instructions

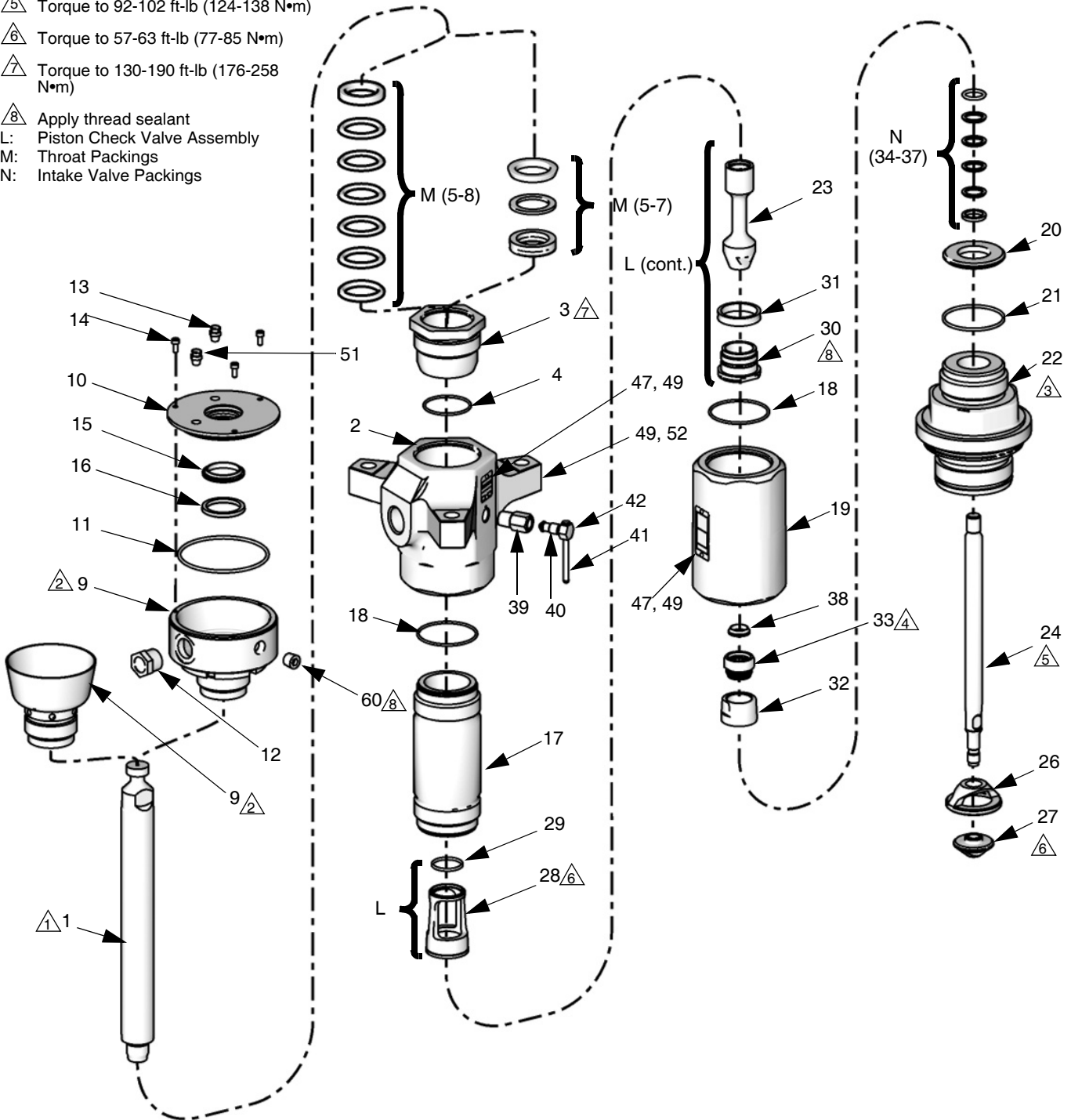
Read all warnings and instructions in manual
312375. Save those instructions.



See manual 312375 for complete disassembly and
reassembly instructions.

KEY:

- ⚠️ 1 Torque to 239-271 ft-lb (323-366 N•m)
- ⚠️ 2 Torque to 95-115 ft-lb (128-155 N•m)
- ⚠️ 3 Torque to 345-435 ft-lb (466-587 N•m)
- ⚠️ 4 Torque to 71-79 ft-lb (96-107 N•m)
- ⚠️ 5 Torque to 92-102 ft-lb (124-138 N•m)
- ⚠️ 6 Torque to 57-63 ft-lb (77-85 N•m)
- ⚠️ 7 Torque to 130-190 ft-lb (176-258 N•m)
- ⚠️ 8 Apply thread sealant
- L: Piston Check Valve Assembly
- M: Throat Packings
- N: Intake Valve Packings



T110863B

Parts

Ref.	Part	Description	Qty.	Ref.	Part	Description	Qty.
1	★❄255571	KIT, rod, displacement; chrome (includes 18, 21)	1	29‡		BEARING, guide	1
	❄❄255572	KIT, rod, displacement; MaxLife (includes 18, 21)	1	30‡		SEAT, piston	1
2	★❄255605	KIT, outlet, housing (includes 18, 21, 47, 49, 52)	1	31‡		SEAL, piston; see Packing Kits	1
	❄❄255606	KIT, outlet, housing; SST (includes 18, 21, 47, 49, 52)	1	32‡		VALVE, intake	1
3	★❄189641	CARTRIDGE	1	33‡	★❄	NUT, packing	1
	❄❄189645	CARTRIDGE; SST	1		❄❄	NUT, packing; SST	1
4‡	166073	O-RING	1	34‡	★❄	GLAND, male, piston; see Pack- ing Kits	1
5‡	★❄	GLAND, packing female; see Packing Kits	1		❄❄	GLAND, male, piston; SST; see Packing Kits	1
	❄❄	GLAND, packing, u-cup; see Packing Kits	1	35‡		V-PACKING; see Packing Kits	2
6‡	★❄	V-PACKING; PTFE; see Pack- ing Kits	3	36‡	★❄	V-PACKING; see Packing Kits	2
	❄❄	SPACER, u-cup; see Packing Kits	1		❄❄	V-PACKING; see Packing Kits	2
7‡	★❄	V-PACKING; UHMWPE; see Packing Kits	2	37‡	★❄	GLAND, female; see Packing Kits	1
	❄❄	SPACER, u-cup, bearing; see Packing Kits	1		❄❄	GLAND, female, piston; SST; see Packing Kits	1
8‡	★❄	GLAND, packing male; see Packing Kits	1	38‡		SEAL, valve	1
9‡	★	NUT, packing, open	1	39‡	★❄	HOUSING, valve	1
	❄	NUT, packing, open; SST	1		❄❄	HOUSING, valve; SST	1
	❄	CUP, wet, enclosed	1	40‡	★❄	PLUG, valve	1
	❄	CUP, wet, enclosed, SST	1		❄❄	PLUG, valve; SST	1
10‡	❄❄	COVER, wet cup	1	41‡		HANDLE, outlet bleed	1
11‡	❄❄104095	O-RING	1	42‡		CLIP, outlet bleed	1
12‡	❄❄	SIGHTGLASS	1	47▲	★❄184090	LABEL, warning	2
13‡	❄❄	COVER, oil hole	1		❄❄184462		
14‡	❄❄	SCREW, socket hd cap; M5 x 12	3	49	★❄100508	SCREW, drive	6
15‡	❄❄	WIPER, wet cup cover	1		❄❄109202		
16‡	❄❄	SEAL, wet cup cover	1	50▲	172479	TAG, instruction, safety	1
17‡	★❄	CYLINDER, pump, Severe Duty	1	51	❄❄	PLUG, pipe	1
	❄❄	CYLINDER, pump, MaxLife	1	52	197561	PLATE, identification	1
18‡	109499	O-RING	2	60	❄❄	PLUG, pipe	1
19	★❄189442	HOUSING, valve	1				
	❄❄189512	HOUSING, valve; SST	1				
20‡		SEAT, valve	1				
21	189492	SEAL	1				
22	★❄255611	KIT, intake housing (includes 21)	1				
	❄❄255612	KIT, intake housing; SST (includes 21)	1				
23‡		SEAT, piston	1				
24‡	★❄	ROD, piston; Severe Duty	1				
	❄❄	ROD, piston; MaxLife	1				
26	276378	PISTON	1				
27	190241	SEAT, piston	1				
28	★❄15M520	GUIDE, piston	1				
	❄❄15M654	GUIDE, piston; SST	1				

★ *Model L200CS only.*

❄ *Model L200CM only.*

❄ *Model L200SS only.*

❄ *Model L200SM only.*

‡ *See Kits table.*

▲ *Replacement Danger and Warning labels, tags, and cards are available at no cost.*

Kit Descriptions

Kit	Description
255509	Complete Seal Kit, L200CS
255510	Complete Seal Kit, L200CM
255511	Complete Seal Kit, L200SS
255512	Complete Seal Kit, L200SM
255525	Throat Seal Kit, L200CS
255526	Throat Seal Kit, L200SS
255527	Throat Seal Kit, L200CM and L200SM
255534	Piston Kit
255541	Intake Soft Seal Kit, L200CS
255622	Intake Soft Seal Kit, L200CM
255542	Intake Soft Seal Kit, L200SS
255623	Intake Soft Seal Kit, L200SM
255552	Piston Seal Metal and Soft Kit
255559	Intake Valve Seal Metal and Soft Kit; Severe Duty, L200CS
255625	Intake Valve Seal Metal and Soft Kit; MaxLife, L200CM
255560	Intake Valve Seal Metal and Soft Kit; Severe Duty, L200SS
255626	Intake Valve Seal Metal and Soft Kit; MaxLife, L200SM
255571	Displacement Rod Kit, L200CS and L200SS
255572	Displacement Rod Kit, L200CM and L200SM
255579	Priming Piston Rod Kit; L200CS
255580	Priming Piston Rod Kit; L200CM
255581	Priming Piston Rod Kit; L200SS
255582	Priming Piston Rod Kit; L200SM
255593	Cylinder Kit; L200CS, L200SS
255594	Cylinder Kit; L200CM, L200CS
255605	Outlet Kit; Carbon models
255606	Outlet Kit; SST models
255611	Intake Housing Kit; Carbon models
255612	Intake Housing Kit; SST models
237908	Bleed Valve Kit, all Carbon models

Kit	Description
255616	Bleed Valve Kit, all SST models
255619	Enclosed Wet Cup Seal Kit; MaxLife, L200CM and L200SM
255693	Complete Seal Kit; PTFE Alternative; includes all PTFE Alternative kits listed under Packing Kits , page 6
255697	Enclosed Wet Cup Kit; L200CM
255700	Enclosed Wet Cup Kit; L200SM

Packing Kits

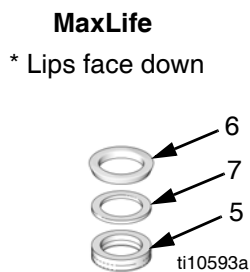
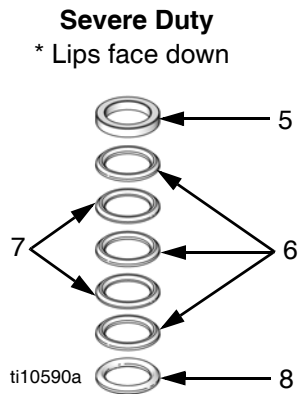
Throat Packings

Severe Duty

Ref.	Description	Qty.
5	★ GLAND, packing, female	1
	* GLAND, SST	1
6	V-PACKING; UHMWPE	3
7	V-PACKING; PTFE	2
8	★ GLAND, packing, male	1
	* GLAND, packing, male; SST	1

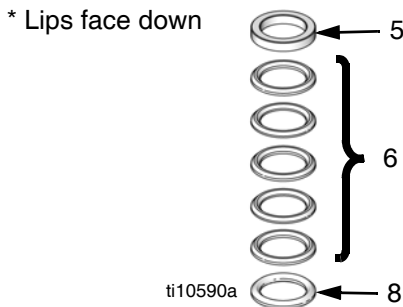
MaxLife

Ref.	Description	Qty.
5	SEAL, u-cup	1
6	SPACER, metal	1
7	SPACER, acetal	1



PTFE Alternative

Ref.	Description	Qty.
5	GLAND, packing, female	1
6	V-PACKING, PTFE	5
8	GLAND, packing, male	1



Intake Valve Packings

Severe Duty and MaxLife

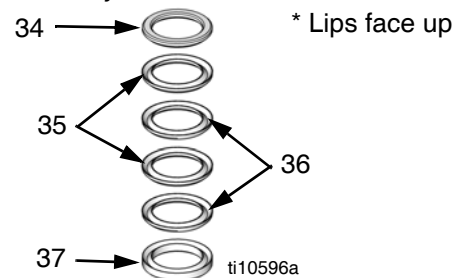
Ref.	Description	Qty.
34	★✘ GLAND, male, priming piston	1
	*✘ GLAND, male, priming piston; SST	1
35	PACKING; UHMWPE	2
36	★* PACKING; PTFE (Severe Duty)	2
	✘* PACKING; leather (MaxLife)	2
37	★✘ GLAND, female, priming piston	1
	*✘ GLAND, female, priming piston; SST	1

★ *Model L200CS only.*

✘ *Model L200CM only.*

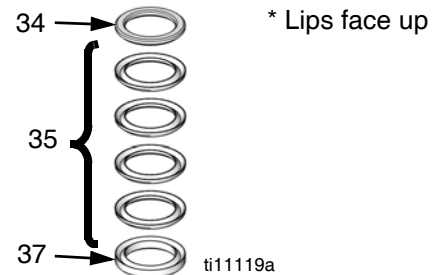
* *Model L200SS only.*

✘ *Model L200SM only.*



PTFE Alternative

Ref.	Description	Qty.
34	GLAND, male, priming piston	1
35	PACKING, PTFE	4
37	GLAND, female, priming piston	1



Piston Packings

PTFE Alternative

Ref.	Description	Qty.
31	SEAL, piston	1

All written and visual data contained in this document reflects the latest product information available at the time of publication. Graco reserves the right to make changes at any time without notice.

Original instructions. This manual contains English. MM 312468

Graco Headquarters: Minneapolis

International Offices: Belgium, China, Japan, Korea

GRACO INC. AND SUBSIDIARIES • P.O. BOX 1441 • MINNEAPOLIS MN 55440-1441 • USA

Copyright 2007, Graco Inc. All Graco manufacturing locations are registered to ISO 9001.

www.graco.com

Revision F, April 2018